



so refreshing

RenoPipe.

The invisible air distribution system
for renovations.

A revolution in housing construction.

RenoPipe: The smart air distribution system for energy-saving renovation.

Until now, renovation measures in existing buildings have mostly concentrated on the insulation of the building envelope and furnishing with heat insulated windows and doors. These measures protect the building against uncontrolled heat loss and help to reduce energy costs.

The building envelope will thereby certainly become effectively airtight. The required minimum air exchange rate that is specified in DIN 4108 and energy-saving regulations, "for the purpose of human health" is prevented. The consequences are moisture damage, mould growth, ultimately more expensive construction damage and poor air quality.

For these reasons, a ventilation measure is essential for energy-saving renovation.



Just a few „clicks“ away:

Most residents cannot notice that the entire RenoPipe system, including the ventilation with heat recovery, is installed.

The unique RenoPipe system from Helios provides a healthy indoor climate with a low installation workload, at a low cost and a low expenditure of time in the old constructions. Moisture damage is prevented, which preserves the building structure and safeguards the value of the property.

Furthermore, RenoPipe saves valuable energy through heat recovery. The KWL® ventilation system heat exchanger transfers the energy of the used extracted air and the fresh outdoor air, which is preheated and filtered and subsequently flows into the living room and lounges.

Unbeatable: The RenoPipe system, specifically designed for energy-saving renovation:

■ Very simple and cost-effective as there are few components.

There is no need for extracted air outlets and separate sound absorbers with the RenoPipe system. This reduces the required pipework by half and it reduces the number of components to a minimum.

The used, moist extracted air flows directly from the kitchen and bathrooms via the sound absorbing RenoPipe combination distributor into the KWL® ventilation device. The heat exchanger absorbs the heat from the extracted air there, before it is discharged outside.

■ The „2 in 1“ principle: Unobtrusively beautiful and convincingly economical.

RenoPipe supplies the living room and bedrooms with fresh, naturally preheated air, almost invisibly. RenoPipe „2 in 1“ combines the ventilation ducts and aesthetic covers in one unit.

The components made from highly compressed EPS are available with a smooth or stucco profile. They can be painted over and can harmoniously and elegantly form part of the domestic ambience. Additional covers or cover suspensions, time-consuming assembly work and unpleasant ventilation pipes are a thing of the past with RenoPipe.

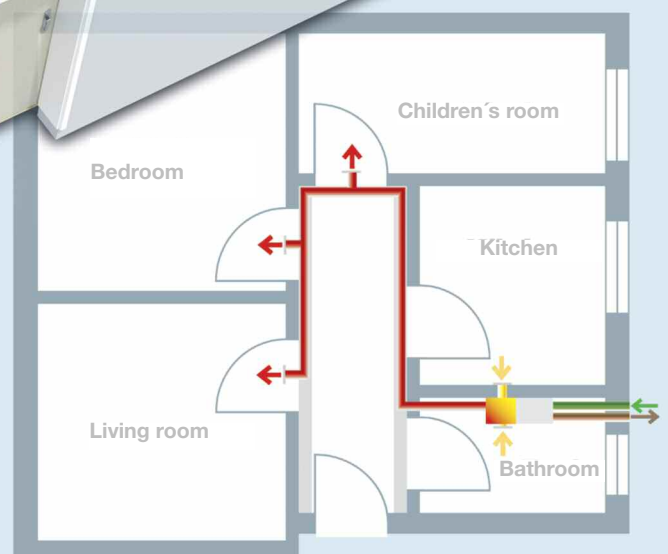
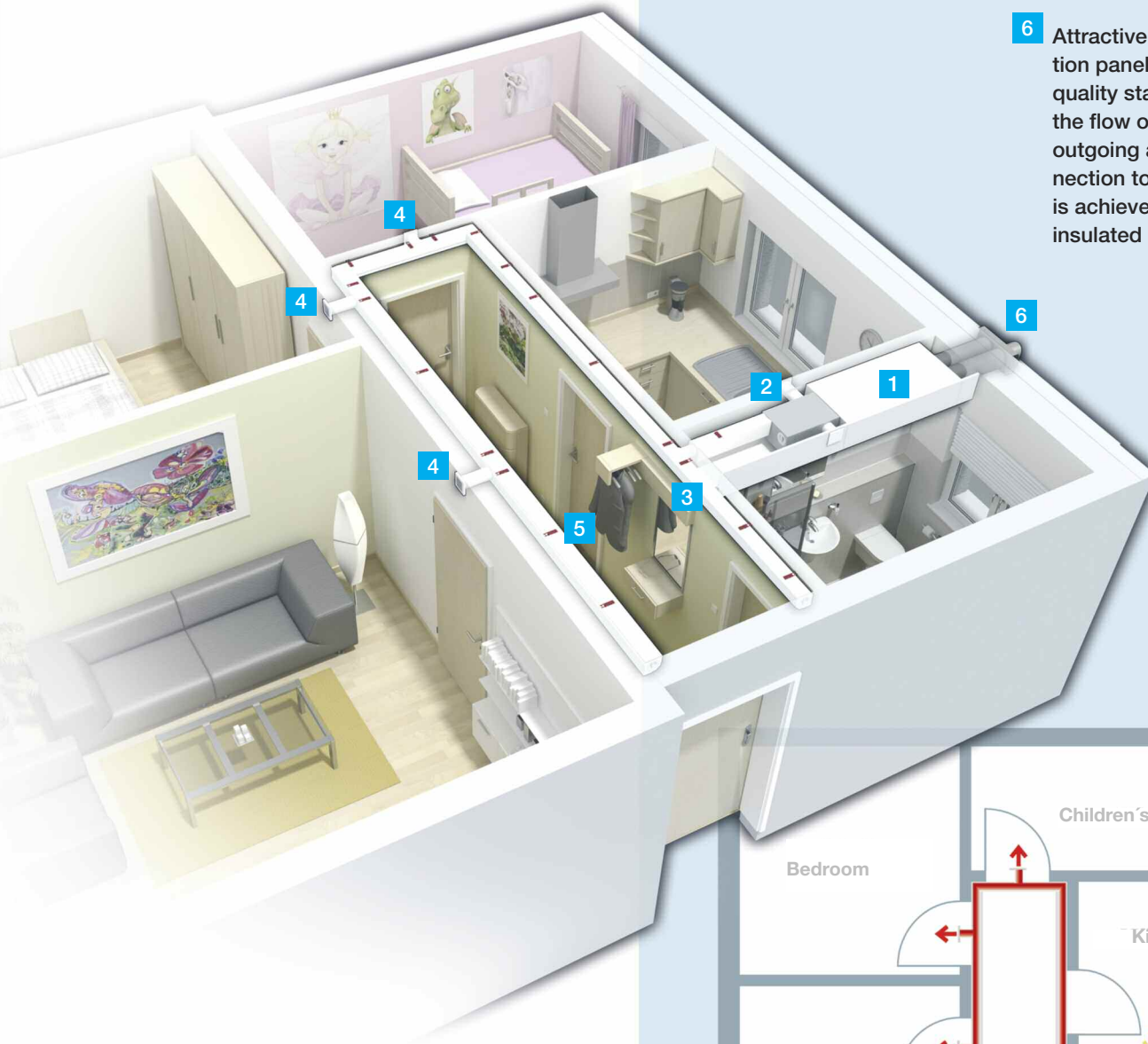
The „2 in 1“ RenoPipe principle significantly saves space, assembly time and costs.

■ RenoPipe incorporates the Helios hygiene concept – for perfect air quality!

The attractively designed ventilation valves filter the extracted air before it enters the air distribution system. Depositions are effectively prevented in the RenoPipe ventilation duct made from highly compressed, closed cell EPS. Asymmetric lip seals between all individual components ensure the absolute air-tightness of the entire air distribution system.

How RenoPipe works.

- 1** KWL® comfortable ventilation device with heat recovery: Saves heat energy and ensures a healthy room climate.
- 2** The „4 in 1“ compact Reno-Pipe combination distributor: collects the extracted air from the kitchen and bathroom. It distributes the supply air in the living room and bedrooms. It also absorbs telephone and device sound.
- 3** „2 in 1“ RenoPipe System components made from highly compressed EPS: Ventilate and cover in one. Available with smooth or stucco profile.
- 4** Elegant ventilation valves in an award-winning design with a visually closed front and an integrated filter.
- 5** Fixing clamps for speed mounting through click mechanisms.
- 6** Attractive façade combination panels made from high quality stainless steel, for the flow of outdoor and outgoing air. The connection to the KWL device is achieved through pre-insulated IsoPipe piping.



■ = supply air ■ = intake air
■ = extracted air ■ = exhaust air

1.. 2.. „click“ and it is complete!

RenoPipe - Ingenious design, right down to the smallest detail.

Making renovation fun.

The revolutionary RenoPipe system is mainly designed for the energy-saving renovation of existing buildings to inhabitable standards and meets the corresponding, specific requirements in an incredibly simple way. Mounting is fast and easy and does not require reworking using dry construction techniques, as the RenoPipe ventilation and covering are the same unit.

The RenoPipe fittings can be easily, individually shortened in accordance with the existing structures. Surface mounting to the ceiling is fast and simple, simply click the long connectors into the fixing clamps included in the contents of delivery. Free-cutting the ducts can level out the ceiling and wall surfaces, mitre cuts are unnecessary for accurately formed parts. Length, transverse and level adjustments can guarantee the perfect sit.

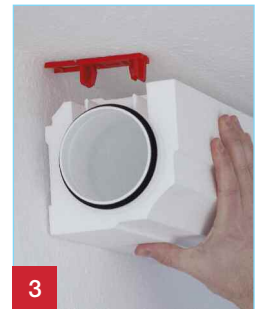
1 Screw the fixing clamps tight.

2 Insert long connectors.

3 Clip in RenoPipe duct.

Complete!

RenoPipe can be installed –
in inhabited buildings too – easily!

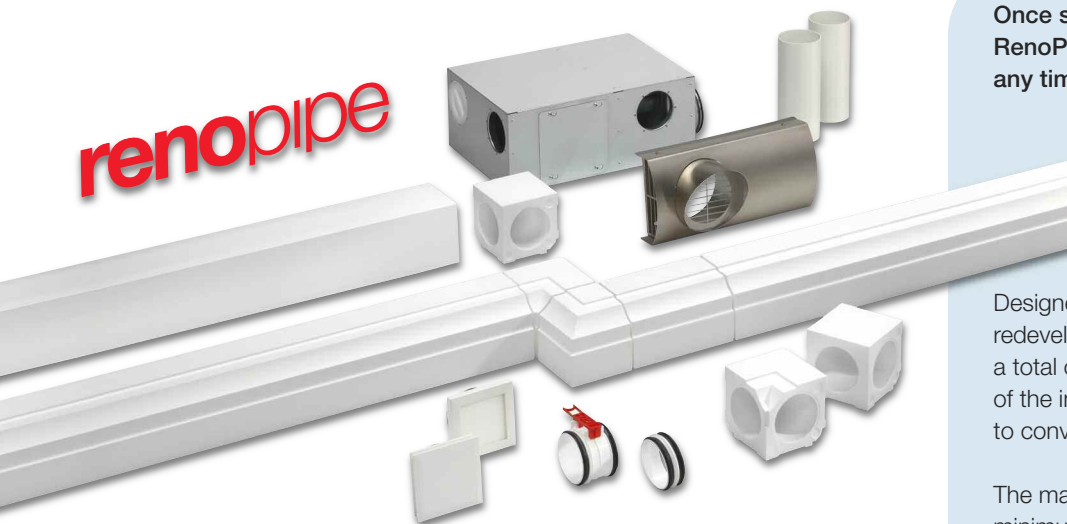


1

2

3

renopipe



Once surface mounted to the ceiling, RenoPipe can easily be removed at any time without residues.

The system impresses through unique advantages:

Designed specifically for the energetic redevelopment in domestic buildings, a total cost saving of 30% is the result of the installation of RenoPipe in relation to conventional air distribution systems.

The material needed is reduced to a minimum. With surprisingly few, clever matching components the air distribution RenoPipe masters every installation situation.

Helios KWL® EC and RenoPipe: The dream team for the best air quality in existing constructions!

Helios the KWL® program belongs to the broadest on the market. It comprises ventilation systems with air flow rates from 60 to 2000 m³/h and covers almost all areas of application.

Super slim ceiling- and compact wall units are with the renovation the ideal addition to the RenoPipe air distribution system. The models can be easily integrated in cabinet, ceiling or wall and are due to the variable connection possibilities universally positionable.

They have the most modern EC motors with highest efficiency for quiet operation and low power consumption. All models are available in an Eco and a Pro version for the utmost comfort.

Overview of all KWL® ventilation devices, please request the main catalogue.



Fit always and everywhere. Ultra flat ceiling unit KWL EC 220D with only 236 mm in height. Presumably available starting from 2nd quarter 2011.

The ingenious KWL® - complete system for the redevelopment. From Helios. All from a single source.

Air that is either used, or loaded with moisture, harmful substances and odours is discharged directly from the kitchen and bathroom via the attractively designed ventilation valves. The heat exchanger in the KWL® ventilation device recovers the heat from the extracted air with an efficiency level of up to 90 % and transfers it to the incoming, fresh outdoor air. Both airflows are filtered and subsequently flow through the exchanger in separate ducts.

The cooled, extracted air flows into the open via the elegant façade combination panels made from stainless steel. The pleasant, pre-heated supply air then flows into the living room and bedrooms through the ingenious RenoPipe air distribution system, developed specifically for renovations.

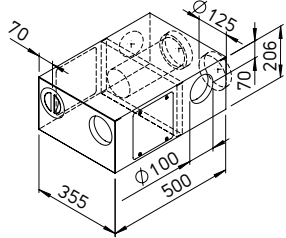


Compact wall unit with EC technology and heat recovery. Air flow rates 200 till 500 m³/h. Certified for passive house standard.

The RenoPipe system components at a glance.

Combination distributor

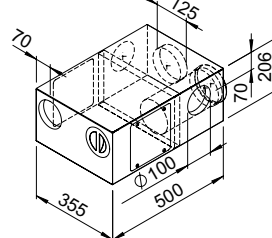
NEW!



RenoPipe combination distribution box, supply air right
Compact distributor from galvanised sheet steel with sound absorbing lining inside. Features: Extract air collector, supply air distributor with sound attenuation function. Unit connection 2 DN 125, 2 x DN 100 for extraction, 2 x DN 100 for supply air. Includes inspection opening and cover plate.

RP-KVK 3-100/125 R No. 3048

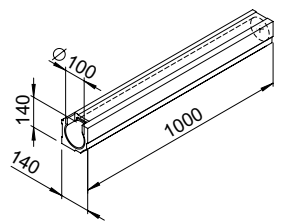
Combination distributor



RenoPipe combination distribution box, supply air left
Compact distributor from galvanised sheet steel with sound absorbing lining inside. Features: Extract air collector, supply air distributor with sound attenuation function. Unit connection 2 DN 125, 2 x DN 100 for extraction, 2 x DN 100 for supply air. Includes inspection opening and cover plate.

RP-KVK 3-100/125 L No. 3038

Duct section



All dim. in mm

Duct

Duct piece with smooth, square profile. From closed-cell, highly compressed, white EPS, can be painted over. Inside diameter DN 100, length 1 m. SU=4 pc.*

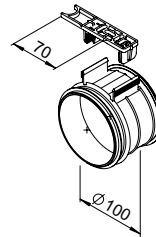
RP-K Ref. No. 3061

Duct with stucco profile

Like above, but with visually attractive stucco profile. SU=4 pc.*

RP-SK Ref. No. 3065

Connector lid

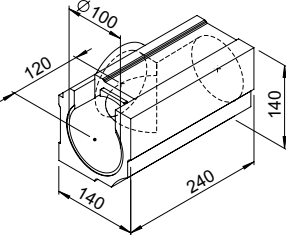


Long connector set

Consisting of connection sleeve from impact resistant polypropylene and two rubber lip-seals for airtight connection with duct piece. Clamp for easy snap mounting of duct piece, included in delivery.

RP-LV Ref. No. 3029

T-Stück



T-section

Compact T-piece with smooth, square profile. From closed-cell, highly compressed, white EPS, can be painted over, inside diameter DN 100/100/100. SU=4 pc.*

RP-T Ref. No. 3062

T-section with stucco profile

Like above, but with visually attractive stucco profile. SU=4 pc.*

RP-ST Ref. No. 3066

Short connector

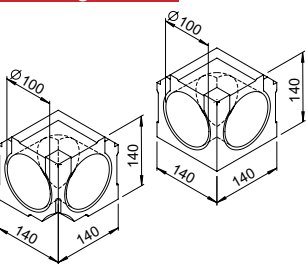


Short connector

Connection sleeve DN 100 from impact resistant polypropylene including rubber lip-seals for airtight connection with RenoPipe EPS shaped parts and wall sleeve.

RP-KV Ref. No. 3030

Inner angle



Inner angle

90°- interior angle piece in compact cube form with smooth, square profile. From closed-cell, highly compressed, white EPS, can be painted over, inside diameter DN 100. SU=2 pc.*

RP-IW Ref. No. 3075

Inner angle with section

SU=2 pc.*

RP-SIW Ref. No. 3077

Final and inspection lid

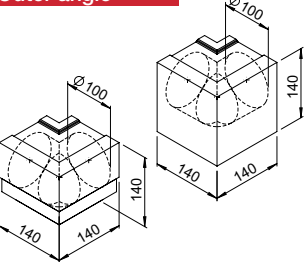


Final and inspection lid

DN 100 from high quality polymer, with rubber lip-seal. For installation at duct piece.

RP-RD Ref. No. 3037

Outer angle



Outer angle

90°- exterior angle piece in compact cube form with smooth, square profile. From closed-cell, highly compressed, white EPS, can be painted over, inside diameter DN 100. SU=2 pc.*

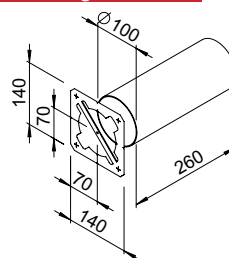
RP-AW Ref. No. 3076

Outer angle with section

SU=2 pc.*

RP-SAW Ref. No. 3078

Wall casing



Wall casing

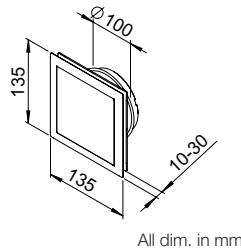
DN 100 from PVC, including mounting template for easy wall penetration.

RP-WH Ref. No. 3035

* Supplied in packaging units.

The RenoPipe system components at a glance.

Ventilation valves



All dim. in mm

Design ventilation valve

Design ventilation valve for extract air operation, DN 100, adjustable. With concealed opening and integrated filter.

DLV 100

Ref. No. 3039

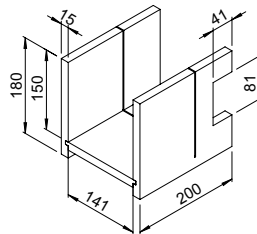
Spare filter

SU=5 pc.*

ELF-DLV 100

Ref. No. 3042

Cutting guide



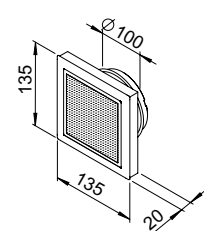
Cutting guide

Practical cutting guide, beech multiplex 15 mm, for easy cutting duct piece to length.

RP-SH

Ref. No. 3036

Ventilation valves



Design ventilation valve

for supply air

Design ventilation valve for supply air operation, DN 100, adjustable. With concealed opening and integrated filter.

DLVZ 100

Ref. No. 3040

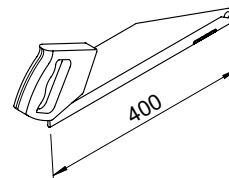
Spare filter

SU=3 pc.*

ELF-DLVZ 100

Ref. No. 3043

Precision saw



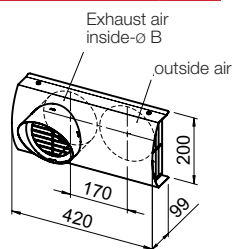
Precision saw

Special hand slitting saw for slight cuts.

RP-FS

Ref. No. 3044

Façade combination panel



Façade combination panel

outside air, right

Perfectly designed external wall hood from high grade steel for connection of outside and exhaust air duct DN 125.

IP-FKB 125 R

Ref. No. 2689

Cleaning kit



Cleaning kit

The universal cleaning kit is perfect for cleaning the RenoPipe air distribution system. Application is optionally under pressure (with short ways) or tension possible. With longer ducting distances or narrow elbows the nylon wheel brush is pulled simply toward the distribution box, at which the 90° elbow is used for the vacuum connection. Via this, the dust particles dislodged by the nylon wheel brush are vacuumed without problems with a commercial vacuum cleaner.

KWL-RS

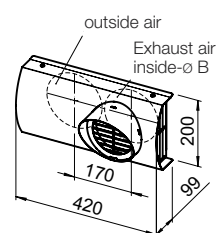
Ref. No. 2797

Delivery in practical transportation bag.

Scope of delivery: 1 piece of each

- Hand reel with flexible glass fibre reinforced wire (20 running mtrs)
- Wheel brush DN 63, 75, 100
- 90° elbow and sealing for vacuum connection DN 56
- Adapter DN 56/40, DN 56/32

Façade combination panel



Façade combination panel

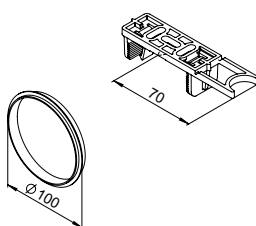
outside air, left

Perfectly designed external wall hood from high grade steel for connection of outside and exhaust air duct DN 125.

IP-FKB 125 L

Ref. No. 2690

Fixing clamps / lip seals



Fixing clamps

From high quality, impact resistant polymer.

SU=5 pc.*

RP-BK

Ref. No. 3031

Lip seals

DN 100 from EPDM.

SU=10 pc.*

RP-LD

Ref. No. 3033

* Supplied in packaging units.



so refreshing

Helios Ventilation Systems Ltd. • 5 Crown Gate • Wyncolls Road • Severalls Industrial Park • Colchester, Essex CO4 9HZ
phone: +44 (0) 1206 / 228500 • telefax: +44 (0) 1206 / 228501 • e-mail: sales@heliosfans.co.uk • www.heliosfans.co.uk

KWL® is a registered trademark of Helios Ventilatoren. Copyright ©: Helios Ventilatoren, 78056 VS-Schwenningen / Germany.
Certified according to ISO 9001/2000. We reserve the rights for alterations without prior notice. Document no. 86 643.840/04.11