

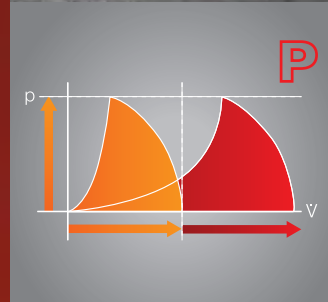
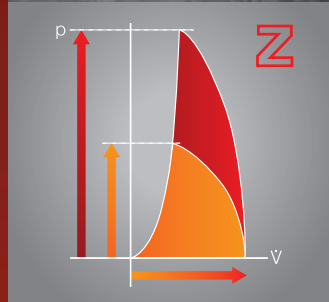
The Helios medium pressure axial fans are ideally suited for diverse fields of application in professional ventilation technology, like e.g. in ventilation systems for car parks, shopping malls and public buildings as well as smoke and heat exhaust fans and smoke protection pressure systems.

As two-stage, in-line Z- or parallel P-units they are ideal for use in car parks. Universal installation possibilities (horizontal and vertical positioning) provide for flexible use. As smoke and heat exhaust fan, the series B AMD is used within the fire zone, outside the fire zone (with heat and sound insulation L90), as well as outside the building.

The main advantages of medium pressure axial fans AMD and AMD B are:

- Aerodynamically profiled blades from high-strength aluminum alloy.
- Casing from sheet steel with surface protection.
- Guide vane from steel.
- Delivery ready for connection.
- Universal installation possibilities

For the fulfilment of versatile TGA-requirements with regard to pressure rise, flow rate, space requirements, the arrangement of two identical fans in a row (Z) or side by side (P) is ideal. Details see page 6 on.



Two-stage units

Parallel units



**Medium pressure axial fans.  
Maximum performance for  
diverse applications.**

With flow rates up to 113 000 m<sup>3</sup>/h and very high pressure figures till 1 400 Pa the medium pressure axial fan series correspond ideally to the varied standards of the professional TGA ventilation technology.

The AMD and B AMD types combine highest performance with efficient energy consumption. The factory adjustable, profiled blades made of aluminum cast alloy ensure precise adjustment to the respective operating point. An adjustment of the motor power to the respective project standards is easily possible with the help of the performance-related characteristic curve portrayal.

HELIOS medium pressure axial fans are available for ventilation at normal air flow temperatures from -20 °C to + 40 °C (AMD) or in the temperature classes F300 and F400 (B AMD) for use as mechanical smoke extraction systems (MRA). There are over 300 types in 12 sizes (sizes 315-1120) available.



■ **Application**

- Versatile application in the TGA-ventilation technology, e.g. for car park ventilation, in smoke pressure systems, etc.
- For preventive fire protection to secure smoke and heat extraction.
- For applications with air flow temperatures of 300 °C for 120 minutes and 400 °C for 120 minutes (F300 and F400).
- Suitable for continuous operation for temperature from -30 °C to +40 °C.

■ **Casing**

- Cylindrical duct with welded motor supporting plate and guide vane made of sheet steel. With flanges on both ends (except AVD DK) steel to DIN 24155 PT3. For direct in-line installation in ducting.
- Surface protection by powder coating RAL 7015 (grey).

■ **Impeller**

- Hub and blades from corrosion-resistant aluminum alloy.
- Dynamically balanced to DIN ISO 1940-1, class 6.3 for low-vibration operation.
- Ten aerodynamically profiled blades achieve highest efficiency and pressure rates in cooperation with the guide vane.
- Pitch angle of the blades adjustable and factory set according to the ordered, optimal operating point.

■ **Motor**

- Series AMD: Maintenance-free 3-phase a.c. standard motor, protection to IP 55, insulation class F.
- Series B AMD: Direct driven by IEC-three phase a.c. motor (Smoke Extraction Motors F300 or F400). Protection to IP 55. Insulation class H. External cable with sheathing. Depending on the installation situation, relubrication intervals or bearing replacements must be observed (see installation and operating instructions).

■ **Speed control**

Stepless (0-100 %) by use of frequency inverters (pole-switching models excluded). The planned use of a frequency inverter without sine filter must be stated when ordering. This causes a change of the fan execution and if necessary additional costs. If used as smoke and heat exhaust fan these switching devices on the on-site control are to be bridged.

■ **Motor protrusion**

- With some types, the motor casing projects beyond. Protrusion dimension B mm is to be

observed according to the type table.

■ **Motor protection**

- Series AMD: All types (pole-switching models excluded) are available with PTC-resistors, which are connected to the terminal box located on the outside of the casing (special execution). With that an effective motor protection by means of full motor protection unit (MSA, Ref. no. 1289, accessories) or frequency inverter (accessories) is possible. Models without PTC-resistors are to be protected by means of motor protection switch on site.
- Series B AMD: The B AMD types are to be protected by means of motor protection switch on site. In case of smoke extraction this must be bridged.

■ **Electrical connection**

- Series AMD: Standard terminal box (protection to IP 55) from polymer, mounted on the outside of the casing.
- Series B AMD: Standard terminal box (protection to IP 55) from aluminium diecasting, mounted on the outside of the casing.
- Terminal box is mounted with an permanently attached cable with fire-resistant protective sheathing.

■ **Air flow temperatures**

- Series AMD: Suitable for ventilation from -20 °C to +40 °C continuous temperature. Higher air flow temperatures for continuous operation on request.
- Series B AMD: Like series AMD, however, in addition for smoke extraction according to the temperature classification to 300 °C/120 minutes or 400 °C/120 minutes.

■ **Air flow direction**

- The fans come in air flow direction B = pushing air over the motor (Fig. 1).

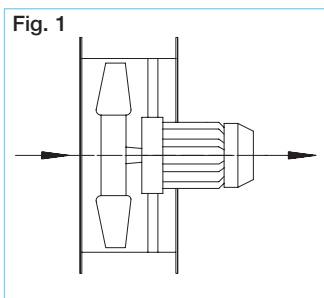


Fig. 1

■ **Sound levels**

- On the product pages above the performance curves are the spectrum figures and total sound

power levels for different pitch angles indicated.

■ **Order data**

The desired pitch angle of the blades is mandatory when ordering.

Example:

B AMD 355/2 1,5 kW F300 34°



■ **Certification**

The smoke and heat exhaust fans B AMD were tested to DIN EN 12101-3., the DIBt approvals are applied.

Approved by the CE certificate of conformity 1511 CPD 504 (F300), 1511 CPD 505 (F400).

■ **Selection of**

**anti vibration mounts**

In order to reduce the vibrations caused by rotating components in the fan optimally the right selection of the anti vibration mounts is essential. The layout is based on the calculated weight of fan including accessories, which is to be damped. For this purpose, the individual weights of the components must be added.

- Example 1:

**B AMD 710/4 7,5 kW F300 with extension duct**

1. Determining the weight to be damped
 

Weight B AMD 710/4	152 kg
Weight VR 710	21,5 kg
Total weight:	<u>173,5 kg</u>
2. Selection of anti vibration mounts (see page 150)
  - » up to 210 kg = **SDD 5**

- Example 2:

**B AMD 710/4 7,5 kW F300 as P-unit**

1. Determining the weight to be damped
 

Weight B AMD 710/4	152 kg
Weight B AMD 710/4	152 kg
Weight MP-P 710	145 kg
Total weight:	<u>449 kg</u>
2. Selection of anti vibration mounts (see page 150)
  - » up to 580 kg = **SDD 7**

- Example 3:

**B AMD 710/4 7,5 kW F300 as Z-unit**

1. Determining the weight to be damped
 

Weight B AMD 710/4	152 kg
Weight B AMD 710/4	152 kg
Weight MK 710	10,5 kg
Weight MP-Z 710	43 kg
Total weight:	<u>357,5 kg</u>
2. Selection of anti vibration mounts (see page 150)
  - » up to 400 kg = **SDD 6**

### ■ Installation

- Horizontal and vertical installation depending on the place of installation:
  - Within the fire zone, without heat and sound insulation.
  - Outside of the fire zone, within the building with heat and sound insulation L 90.
  - Outside of the building without heat and sound insulation.

To avoid vibration transmission to building and ducting the use of anti vibration mounts (accessories SDD, SDZ) is highly recommended.

**Compliance with the Federal, as well as the regional fire protection regulations.**

### □ Duct installation (tilting)

To prevent a tilt-affinity during installation of medium pressure axial fans with flanged flexible connectors on each side (STS, accessories), an extension duct (type VR, accessories) is to be provided (Fig. 2).

### □ Duct installation (horizontal)

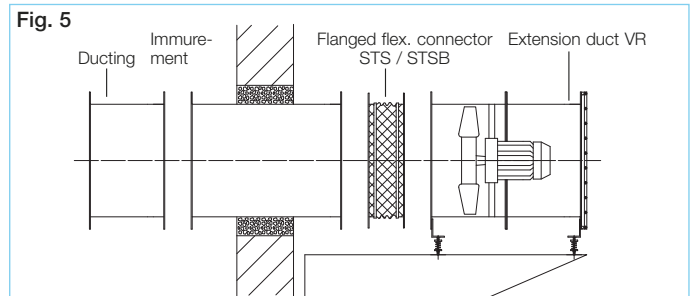
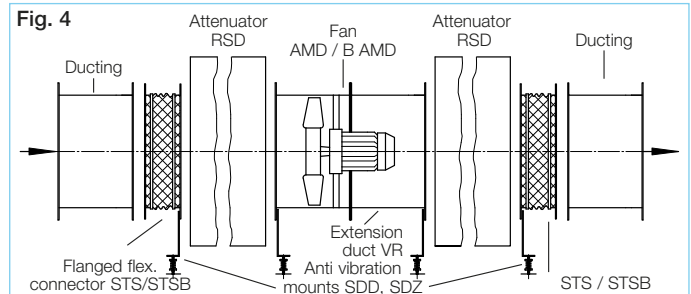
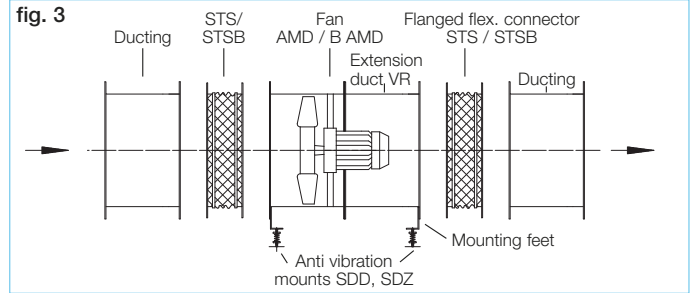
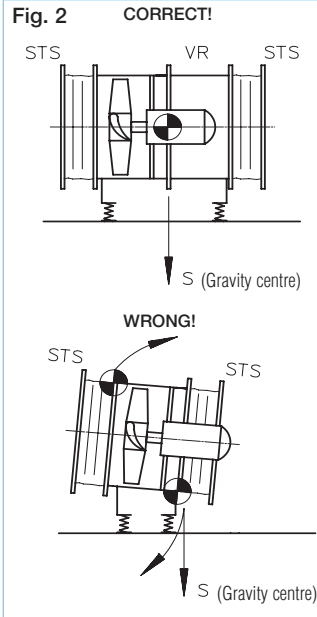
Arrangement of the mounting feet MK, accessories) and anti vibration mounts on both flange sides of the unit. Use of anti vibration mounts for compression (SDD, accessories) or for suspension (SDZ, accessories, for ceiling suspension). To prevent sound and vibration transmissions flanged flexible connectors STS (accessories) are to be provided on each side (Fig. 3).

### □ Duct installation with attenuator on each side

According to the local conditions are brackets (to be provided on site) for fastening of the attenuators and to support the weight required. The intake attenuator must be fitted at the entrance, the outlet attenuator at the discharge with flanged flexible connectors (STS, STSB) (Fig. 4).

### □ Wall installation (horizontal)

Onto a bracket (to be provided on site). Wall bushing with duct, immurement with mineral wool. Flanged flexible connectors (STS, accessories) on each side with extension duct (VR, accessories) and guard (SG, accessories) (Fig. 5).



### ■ Two-stage and parallel units

**The versatile requirements with regard to pressure rise, flow rate and space requirements** are fulfilled in the area of technical building equipment (TGA) often by two-stage Z- or parallel P-units. The Helios program offers suitable mounting packages for the respective units:

### □ Two-stage unit / Mounting package MP-Z (Fig. 6)

Two fans connected in series ensure unrivalled power density and favourable installation with minimum space requirements. The two fans are arranged in a row and connected by means of extension ducts.

#### Mounting package MP-Z (Scope of delivery):

Extension ducts (2 pcs) incl. assembly kit (Hexagon head screws, -nuts, spring washers).

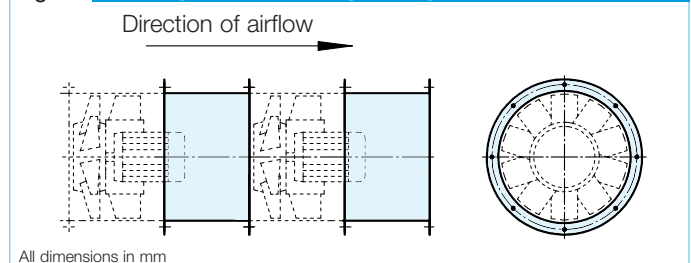
### □ Parallel unit / Mounting package MP-P

Two parallel connected fans bring high flow rates at suitable pressure rate and fulfill especially the requirements for car park ventilation and smoke extraction. Two identical fans which are arranged side by side operate in a joint duct system.

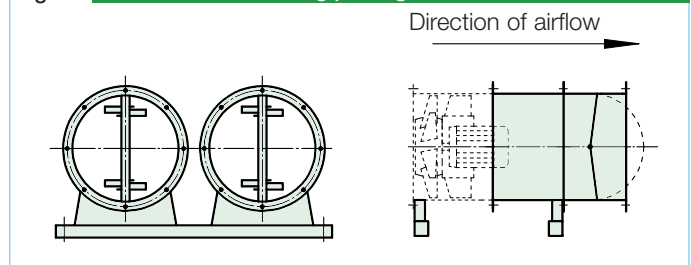
#### Mounting package MP-P (Scope of delivery):

Extension ducts (2 pcs), back draught shutters (2 pcs), mounting feet (4 pcs), mounting bars (2 pcs), assembly kit (Hexagon head screws, -nuts, spring washers, washers and threaded plate).

### Fig. 6 Two-stage unit / Mounting package MP-Z



### Fig. 7 Parallel unit / Mounting package MP-P



■ Accessories	Pages
Design of systems	6 on
Z-/P-units	6 on
Mounting accessories	146 on
Attenuator	151
Speed control,	
Pole switch	152 on
Frequency inverter	162 on

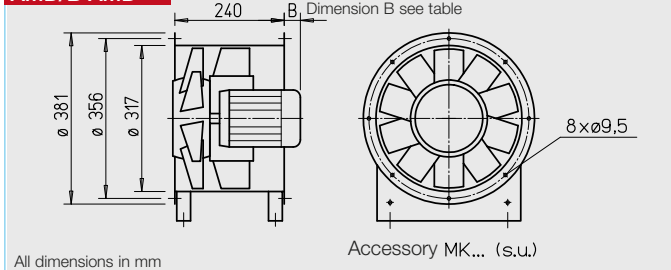


(Fig. incl. mounting feet (MK, accessories))

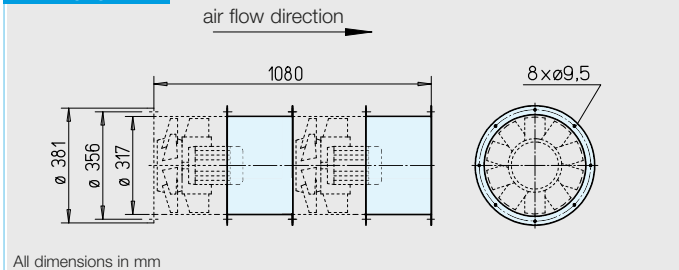
**Certification**

The smoke and heat exhaust fans B AMD were tested to DIN EN 12101-3., the DIBt approvals are applied. CE certificate of conformity 1511 CPD 504 (F300), 1511 CPD 505 (F400).

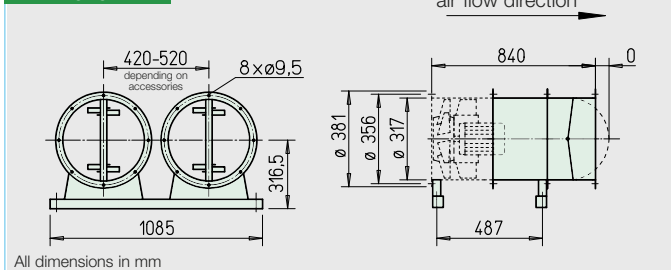
**AMD/B AMD**



**MP-Z 315**



**MP-P 315**



**Application, casing, air flow direction, etc.**  
see page 46.

**Impeller**

- Hub and blades in corrosion-resistant aluminium alloy. Ten aerodynamically profiled blades achieve highest efficiency and pressure rates in cooperation with the guide vane.
- Dynamically balanced to DIN ISO 1940-1, class 6.3 for low-vibration operation.
- The pitch angle of the blades is adjustable at standstill and factory set.

**Motor**

- Series AMD: Maintenance-free 3-phase a.c. standard motor, protection to IP 55, insulation class F.
- Series B AMD: Direct by IEC-three phase a.c. motor in temperature-resistant execution. Protection to IP 55. Insulation class H. Fire-resistant external cable with sheathing.

**Motor protrusion**

- With some types, the motor casing projects beyond. Protrusion dimension B mm is to be observed according to the type table.

**Motor protection**

- The types are to be protected by means of motor protection switch on site. With the B AMD types this is to be bridged in case of smoke extraction.

**Electrical connection**

- Series AMD: Standard terminal box (protection to IP 55) from polymer, mounted on the outside of the casing.
- Series B AMD: Standard terminal box (protection to IP 55, from aluminium diecasting), mounted on the outside of the casing.

**Air flow temperatures**

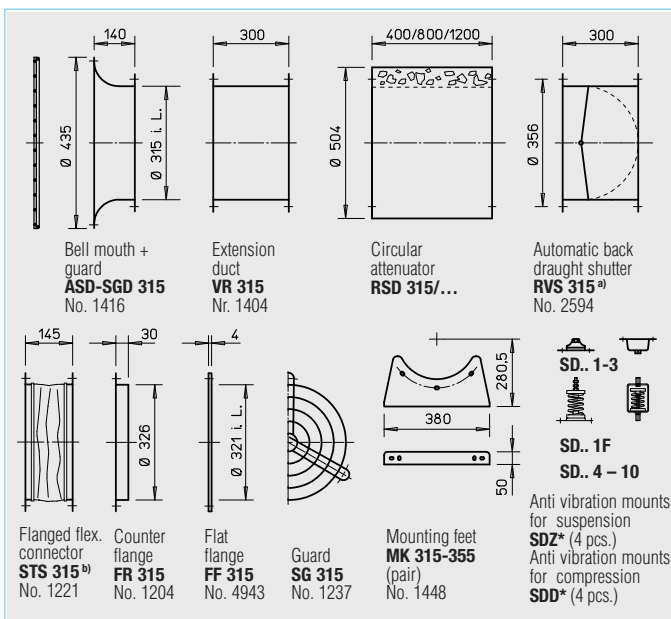
- Series AMD: Suitable for ventilation from -20 °C to +40 °C continuous temperature. Higher air flow temperatures for continuous operation on request.
- Series B AMD: Like series AMD, however, in addition for smoke extraction according to the temperature classification to 300 °C/120 minutes or 400 °C/120 minutes.

**Mounting package MP-Z for two-stage Z-unit**  
To arrange two identical fans in a row, for highest pressure rates.  
Scope of delivery: Extension ducts (2 pcs) and assembly kit.  
Weight: 7,5 kg

**MP-Z 315** Ref. No. 4903

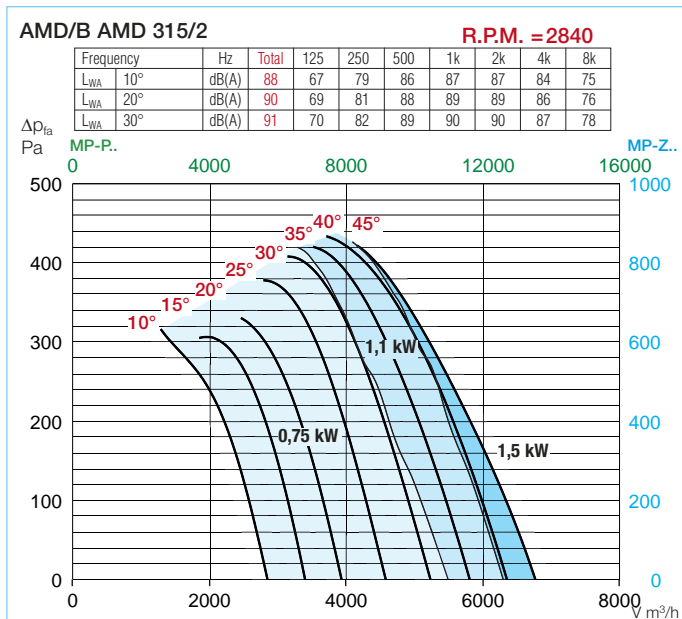
**Mounting package MP-P for parallel P-unit**  
To arrange two identical fans side by side, for highest air flow rates.  
Scope of delivery: Extension ducts, back draught shutters, mounting bars (2 pcs), mounting feet (4 pcs) and assembly kits.  
Weight: 25 kg

**MP-P 315** Ref. No. 4887



<sup>a)</sup> For motorised shutters, for ventilation operation, see accessory pages

<sup>b)</sup> Type for B AMD: STSB 315 F400, No. 14738 \* Type assignment see table, last column



Information	Page
Technical description	46
Design of systems	3 on

Special executions	Pages
Special execution with inspection opening (additional price) on request.	
Special execution with PTC-resistors, which are connected to the terminal box located on the outside of the casing (additional price), essential for operation in connection with frequency inverter or full motor protection switch MSA, always specify when ordering.	

Accessory details	Pages
Mounting accessories	146 on
Attenuators	151
Gas warning systems, circuitry and control technology	152 on
Frequency inverter	162 on

Type	Ref. No.	R.P.M.	Air flow volume (FID)	Motor power (nominal)	Voltage	Current at full load	Dim. B Motor protrusion	Wiring diagram	Max. air flow temp. <sup>1)</sup>	Nominal weight (net)	Full motor protection or pole switch		Anti vibration mounts <sup>4)</sup>				
											Type	Ref. No.	Compression	Ref. No.	Suspension	Ref. No.	
<b>40°</b> 3 Phase motor, 400 V, 50 Hz, protection to IP 55																	
AMD 315/2 0,75 kW	3053	2875	5500	0,75	400	1,68	125	470	40	23	MSA <sup>5)</sup>	1289	SDD 1	1452	SDZ 1	1454	
AMD 315/2 1,1 kW	3054	2875	6500	1,1	400	2,37	125	470	40	24	MSA <sup>5)</sup>	1289	SDD 1	1452	SDZ 1	1454	
AMD 315/2 1,5 kW	3055	2890	6800	1,5	400	3,26	125	470	40	25	MSA <sup>5)</sup>	1289	SDD 1	1452	SDZ 1	1454	
<b>40°</b> 2 speed motor, pole-switching (Dahlander winding Y/YY), 400 V / 3 ph./ 50 Hz, protection to IP 55													Pole switch surface mounted				
AMD 315/4/2 0,17/0,75 kW	3056	1360/2825	2700/5500	0,17/0,75	400	0,64/1,83	125	471	40	27	PDA 12 <sup>2)</sup>	5081	SDD 1	1452	SDZ 1	1454	
AMD 315/4/2 0,25/0,95 kW	3057	1380/2825	3100/6300	0,25/0,95	400	0,84/2,29	125	471	40	29	PDA 12 <sup>2)</sup>	5081	SDD 1	1452	SDZ 1	1454	
<b>F300</b> 3 Phase motor, 400 V, 50 Hz, protection to IP 55																	
B AMD 315/2 0,75 kW F300	3332	2800	5300	0,75	400	1,58	103	498	40 <sup>2)</sup> /300	23	–	–	SDD 1F	1942	SDZ 1F	1943	
B AMD 315/2 1,1 kW F300	3333	2790	6300	1,1	400	2,32	103	498	40 <sup>2)</sup> /300	25	–	–	SDD 1F	1942	SDZ 1F	1943	
<b>F300</b> 2 speed motor, pole-switching (Dahlander winding Y/YY), 400 V / 3 ph./ 50 Hz, protection to IP 55													Pole switch surface mounted				
B AMD 315/4/2 0,2/0,8 kW F300	3335	1400/2820	3200/5300	0,2/0,8	400	0,6/1,91	103	471	40 <sup>2)</sup> /300	25	PDA 12 <sup>2)</sup>	5081	SDD 1F	1942	SDZ 1F	1943	
B AMD 315/4/2 0,25/1,1 kW F300	3336	1390/2810	3400/6300	0,25/1,1	400	0,75/2,41	103	471	40 <sup>2)</sup> /300	26	PDA 12 <sup>2)</sup>	5081	SDD 1F	1942	SDZ 1F	1943	
<b>F400</b> 3 Phase motor, 400 V, 50 Hz, protection to IP 55																	
B AMD 315/2 0,75 kW F400	3164	2800	5300	0,75	400	1,58	103	498	40 <sup>2)</sup> /400	23	–	–	SDD 1F	1942	SDZ 1F	1943	
B AMD 315/2 1,1 kW F400	3165	2790	6300	1,1	400	2,32	103	498	40 <sup>2)</sup> /400	25	–	–	SDD 1F	1942	SDZ 1F	1943	
<b>F400</b> 2 speed motor, pole-switching (Dahlander winding Y/YY), 400 V / 3 ph./ 50 Hz, protection to IP 55													Pole switch surface mounted				
B AMD 315/4/2 0,2/0,8 kW F400	3177	1400/2820	3200/5300	0,2/0,8	400	0,6/1,91	103	471	40 <sup>2)</sup> /400	25	PDA 12 <sup>2)</sup>	5081	SDD 1F	1942	SDZ 1F	1943	
B AMD 315/4/2 0,25/1,1 kW F400	3178	1390/2810	3400/6300	0,25/1,1	400	0,75/2,41	103	471	40 <sup>2)</sup> /400	26	PDA 12 <sup>2)</sup>	5081	SDD 1F	1942	SDZ 1F	1943	

Pitch angle is mandatory when ordering. <sup>1)</sup> During ventilation / smoke extraction (nonrecurring 120 minutes). <sup>2)</sup> Higher air flow temperatures during continuous operation (ventilation mode) on request.  
<sup>3)</sup> Flush mounted version see product page switches. <sup>4)</sup> With Z-/P-design due to higher total weight, type assignment according to tables on page 150.  
<sup>5)</sup> Requires fan in special execution with PTC-resistors connected to the terminal box located on the outside of the casing (additional price).

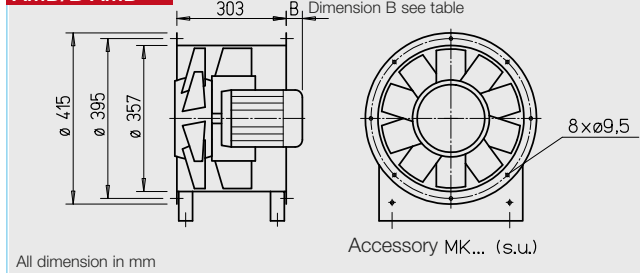


(Fig. incl. mounting feet (MK, accessories))

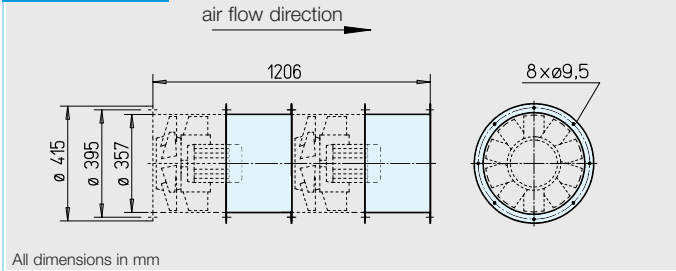
**Certification**

The smoke and heat exhaust fans B AMD were tested to DIN EN 12101-3., the DIBt approvals are applied. CE certificate of conformity 1511 CPD 504 (F300), 1511 CPD 505 (F400).

**AMD/B AMD**



**MP-Z 355**



**Application, casing, air flow direction, etc.**  
see page 46.

**Impeller**

- Hub and blades in corrosion-resistant aluminium alloy. Ten aerodynamically profiled blades achieve highest efficiency and pressure rates in cooperation with the guide vane.
- Dynamically balanced to DIN ISO 1940-1, class 6.3 for low-vibration operation.
- The pitch angle of the blades is adjustable at standstill and factory set.

**Motor**

- Series AMD: Maintenance-free 3-phase a.c. standard motor, protection to IP 55, insulation class F.
- Series B AMD: Direct by IEC-three phase a.c. motor in temperature-resistant execution. Protection to IP 55. Insulation class H. Fire-resistant external cable with sheathing.

**Motor protrusion**

- With some types, the motor casing projects beyond. Protrusion dimension B mm is to be observed according to the type table.

**Motor protection**

- The types are to be protected by means of motor protection switch on site. With the B AMD types this is to be bridged in case of smoke extraction.

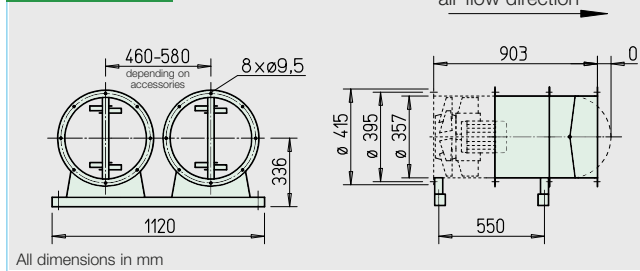
**Electrical connection**

- Series AMD: Standard terminal box (protection to IP 55) from polymer, mounted on the outside of the casing.
- Series B AMD: Standard terminal box (protection to IP 55, from aluminium diecasting), mounted on the outside of the casing.

**Air flow temperatures**

- Series AMD: Suitable for ventilation from -20 °C to +40 °C continuous temperature. Higher air flow temperatures for continuous operation on request.
- Series B AMD: Like series AMD, however, in addition for smoke extraction according to the temperature classification to 300 °C/120 minutes or 400 °C/120 minutes.

**MP-P 355**



**Mounting package MP-Z for two-stage Z-unit**

To arrange two identical fans in a row, for highest pressure rates.

Scope of delivery: Extension ducts (2 pcs) and assembly kit. Weight: 8 kg

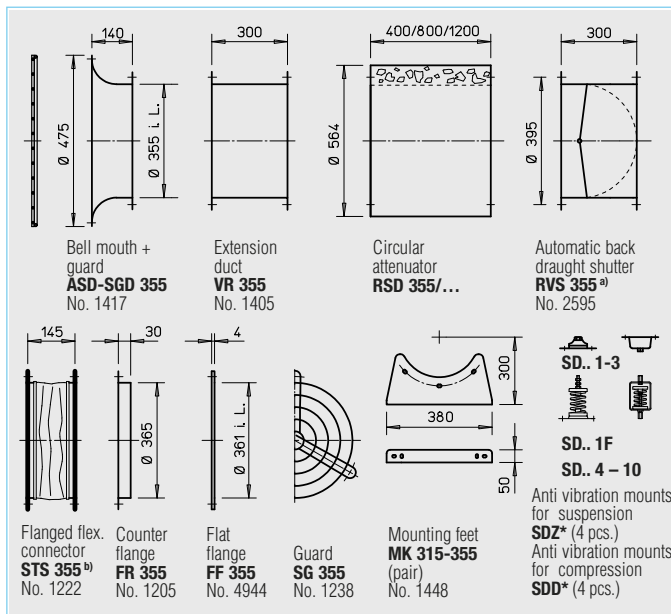
**MP-Z 355** Ref. No. 4904

**Mounting package MP-P for parallel P-unit**

To arrange two identical fans side by side, for highest air flow rates.

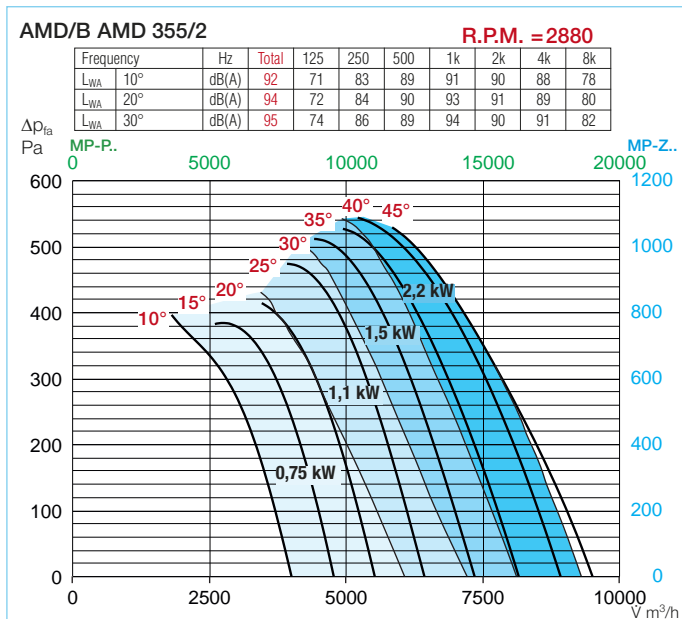
Scope of delivery: Extension ducts, back draught shutters, mounting bars (2 pcs), mounting feet (4 pcs) and assembly kits. Weight: 27 kg

**MP-P 355** Ref. No. 4888



<sup>a)</sup> For motorised shutters, for ventilation operation, see accessory pages

<sup>b)</sup> Type for B AMD: STSB 355 F400, No. 14744 \* Type assignment see table, last column



Information	Page
Technical description	46
Design of systems	3 on

Special executions	Pages
Special execution with inspection opening (additional price) on request.	
Special execution with PTC-resistors, which are connected to the terminal box located on the outside of the casing (additional price), essential for operation in connection with frequency inverter or full motor protection switch MSA, always specify when ordering.	

Accessory details	Pages
Mounting accessories	146 on
Attenuators	151
Gas warning systems, circuitry and control technology	152 on
Frequency inverter	162 on

Type	Ref. No.	R.P.M.	Air flow volume (FID)	Motor power (nominal)	Voltage	Current at full load	Dim. B Motor protrusion	Wiring diagram	Max. air flow temp. <sup>1)</sup>	Nominal weight (net)	Full motor protection or pole switch	Anti vibration mounts <sup>4)</sup>				
												Compression		Suspension		
		min <sup>-1</sup>	V m <sup>3</sup> /h	kW	V	A	mm	No.	+°C	ca. kg	Type	Ref. No.	Type	Ref. No.	Type	Ref. No.
<b>40° 3 Phase motor, 400 V, 50 Hz, protection to IP 55</b>																
AMD 355/2 0,75 kW	3082	2880	5800	0,75	400	1,68	70	470	40	27	MSA <sup>5)</sup>	1289	SDD 1	1452	SDZ 1	1454
AMD 355/2 1,1 kW	3083	2840	6930	1,1	400	2,37	70	470	40	29	MSA <sup>5)</sup>	1289	SDD 1	1452	SDZ 1	1454
AMD 355/2 1,5 kW	3084	2890	8400	1,5	400	3,16	90	470	40	33	MSA <sup>5)</sup>	1289	SDD 1	1452	SDZ 1	1454
AMD 355/2 2,2 kW	3085	2890	9600	2,2	400	4,48	120	470	40	37	MSA <sup>5)</sup>	1289	SDD 1	1452	SDZ 1	1454
<b>40° 2 speed motor, pole-switching (Dahlander winding Y/YY), 400 V / 3 ph./ 50 Hz, protection to IP 55</b>																
Pole switch surface mounted																
AMD 355/4/2 0,17/0,75 kW	3086	1360/2825	2800/5800	0,17/0,75	400	0,64/1,83	70	471	40	31	PDA 12 <sup>3)</sup>	5081	SDD 1	1452	SDZ 1	1454
AMD 355/4/2 0,25/0,95 kW	3087	1380/2825	3200/6500	0,25/0,95	400	0,84/2,29	70	471	40	33	PDA 12 <sup>3)</sup>	5081	SDD 1	1452	SDZ 1	1454
AMD 355/4/2 0,3/1,4 kW	3088	1380/2840	4000/8100	0,3/1,4	400	0,82/3,33	90	471	40	38	PDA 12 <sup>3)</sup>	5081	SDD 1	1452	SDZ 1	1454
AMD 355/4/2 0,4/1,9 kW	3093	1380/2840	4600/9300	0,4/1,9	400	1,07/4,14	120	471	40	46	PDA 12 <sup>3)</sup>	5081	SDD 1	1452	SDZ 1	1454
<b>F300 3 Phase motor, 400 V, 50 Hz, protection to IP 55</b>																
B AMD 355/2 0,75 kW F300	3337	2800	5600	0,75	400	1,58	59	498	40 <sup>2)</sup> /300	28	–	–	SDD 1F	1942	SDZ 1F	1943
B AMD 355/2 1,1 kW F300	3338	2790	6800	1,1	400	2,32	59	498	40 <sup>2)</sup> /300	29	–	–	SDD 1F	1942	SDZ 1F	1943
B AMD 355/2 1,5 kW F300	3339	2830	8300	1,5	400	3,14	59	498	40 <sup>2)</sup> /300	33	–	–	SDD 1F	1942	SDZ 1F	1943
B AMD 355/2 2,2 kW F300	3340	2840	9500	2,2	400	4,58	68	498	40 <sup>2)</sup> /300	36	–	–	SDD 1F	1942	SDZ 1F	1943
<b>F300 2 speed motor, pole-switching (Dahlander winding Y/YY), 400 V / 3 ph./ 50 Hz, protection to IP 55</b>																
Pole switch surface mounted																
B AMD 355/4/2 0,2/0,8 kW F300	3342	1400/2820	2900/5600	0,2/0,8	400	0,6/1,91	59	471	40 <sup>2)</sup> /300	29	PDA 12 <sup>3)</sup>	5081	SDD 1F	1942	SDZ 1F	1943
B AMD 355/4/2 0,25/1,1 kW F300	3343	1390/2810	3500/6800	0,25/1,1	400	0,75/2,41	59	471	40 <sup>2)</sup> /300	30	PDA 12 <sup>3)</sup>	5081	SDD 1F	1942	SDZ 1F	1943
B AMD 355/4/2 0,37/1,5 kW F300	3344	1440/2900	4200/8300	0,37/1,5	400	1,25/3,54	68	471	40 <sup>2)</sup> /300	35	PDA 12 <sup>3)</sup>	5081	SDD 1F	1942	SDZ 1F	1943
B AMD 355/4/2 0,5/2,2 kW F300	3345	1420/2850	4800/9500	0,5/2,2	400	1,54/4,63	93	471	40 <sup>2)</sup> /300	37	PDA 12 <sup>3)</sup>	5081	SDD 1F	1942	SDZ 1F	1943
<b>F400 3 Phase motor, 400 V, 50 Hz, protection to IP 55</b>																
B AMD 355/2 0,75 kW F400	3179	2800	5600	0,75	400	1,58	59	498	40 <sup>2)</sup> /400	28	–	–	SDD 1F	1942	SDZ 1F	1943
B AMD 355/2 1,1 kW F400	3180	2790	6800	1,1	400	2,32	59	498	40 <sup>2)</sup> /400	29	–	–	SDD 1F	1942	SDZ 1F	1943
B AMD 355/2 1,5 kW F400	3181	2830	8300	1,5	400	3,14	59	498	40 <sup>2)</sup> /400	33	–	–	SDD 1F	1942	SDZ 1F	1943
B AMD 355/2 2,2 kW F400	3182	2840	9500	2,2	400	4,58	68	498	40 <sup>2)</sup> /400	36	–	–	SDD 1F	1942	SDZ 1F	1943
<b>F400 2 speed motor, pole-switching (Dahlander winding Y/YY), 400 V / 3 ph./ 50 Hz, protection to IP 55</b>																
Pole switch surface mounted																
B AMD 355/4/2 0,2/0,8 kW F400	3183	1400/2820	2900/5600	0,2/0,8	400	0,6/1,91	59	471	40 <sup>2)</sup> /400	29	PDA 12 <sup>3)</sup>	5081	SDD 1F	1942	SDZ 1F	1943
B AMD 355/4/2 0,25/1,1 kW F400	3184	1390/2810	3500/6800	0,25/1,1	400	0,75/2,41	59	471	40 <sup>2)</sup> /400	30	PDA 12 <sup>3)</sup>	5081	SDD 1F	1942	SDZ 1F	1943
B AMD 355/4/2 0,37/1,5 kW F400	3185	1440/2900	4200/8300	0,37/1,5	400	1,25/3,54	68	471	40 <sup>2)</sup> /400	35	PDA 12 <sup>3)</sup>	5081	SDD 1F	1942	SDZ 1F	1943
B AMD 355/4/2 0,5/2,2 kW F400	3186	1420/2850	4800/9500	0,5/2,2	400	1,54/4,63	93	471	40 <sup>2)</sup> /400	37	PDA 12 <sup>3)</sup>	5081	SDD 1F	1942	SDZ 1F	1943

Pitch angle is mandatory when ordering. <sup>1)</sup> During ventilation / smoke extraction (nonrecurring 120 minutes). <sup>2)</sup> Higher air flow temperatures during continuous operation (ventilation mode) on request.  
<sup>3)</sup> Flush mounted version see product page switches. <sup>4)</sup> With Z-/P-design due to higher total weight, type assignment according to tables on page 150.  
<sup>5)</sup> Requires fan in special execution with PTC-resistors connected to the terminal box located on the outside of the casing (additional price).



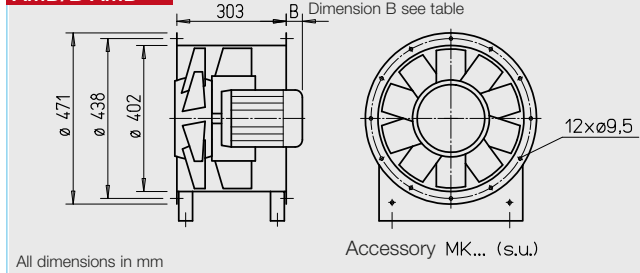


(Fig. incl. mounting feet (MK, accessories))

**■ Certification**

The smoke and heat exhaust fans B AMD were tested to DIN EN 12101-3., the DIBt approvals are applied. CE certificate of conformity 1511 CPD 504 (F300), 1511 CPD 505 (F400).

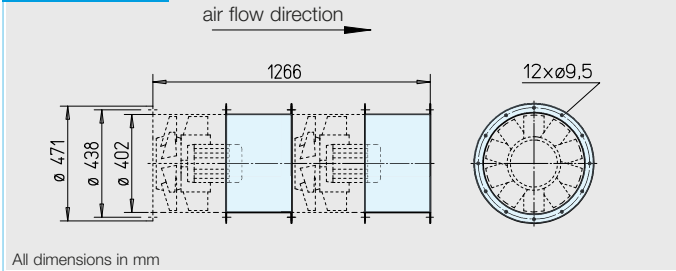
**AMD/B AMD**



All dimensions in mm

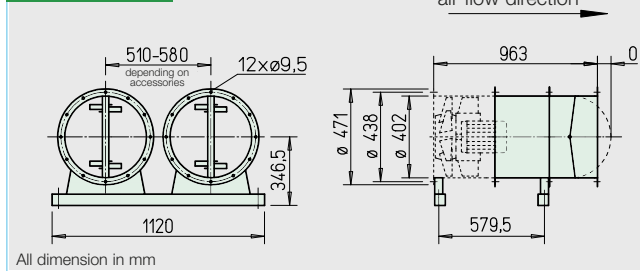
Accessory MK... (s.u.)

**MP-Z 400**



All dimensions in mm

**MP-P 400**



All dimension in mm

**■ Application, casing, air flow direction, etc.**  
see page 46.

**■ Impeller**

- Hub and blades in corrosion-resistant aluminium alloy. Ten aerodynamically profiled blades achieve highest efficiency and pressure rates in cooperation with the guide vane.
- Dynamically balanced to DIN ISO 1940-1, class 6.3 for low-vibration operation.
- The pitch angle of the blades is adjustable at standstill and factory set.

**■ Motor**

- Series AMD: Maintenance-free 3-phase a.c. standard motor, protection to IP 55, insulation class F.
- Series B AMD: Direct by IEC-three phase a.c. motor in temperature-resistant execution. Protection to IP 55. Insulation class H. Fire-resistant external cable with sheathing.

**■ Motor protrusion**

- With some types, the motor casing projects beyond. Protrusion dimension B mm is to be observed according to the type table.

**■ Motor protection**

- The types are to be protected by means of motor protection switch on site. With the B AMD types this is to be bridged in case of smoke extraction.

**■ Electrical connection**

- Series AMD: Standard terminal box (protection to IP 55) from polymer, mounted on the outside of the casing.
- Series B AMD: Standard terminal box (protection to IP 55, from aluminium diecasting), mounted on the outside of the casing.

**■ Air flow temperatures**

- Series AMD: Suitable for ventilation from -20 °C to +40 °C continuous temperature. Higher air flow temperatures for continuous operation on request.
- Series B AMD: Like series AMD, however, in addition for smoke extraction according to the temperature classification to 300 °C/120 minutes or 400 °C/120 minutes.

**■ Mounting package MP-Z for two-stage Z-unit**

To arrange two identical fans in a row, for highest pressure rates.

Scope of delivery: Extension ducts (2 pcs) and assembly kit. Weight: 12 kg

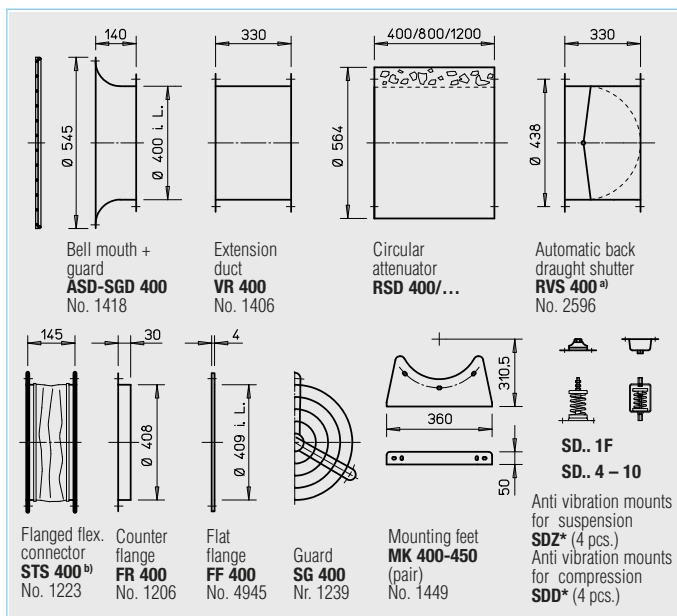
**MP-Z 400** Ref. No. 4905

**■ Mounting package MP-P for parallel P-unit**

To arrange two identical fans side by side, for highest air flow rates.

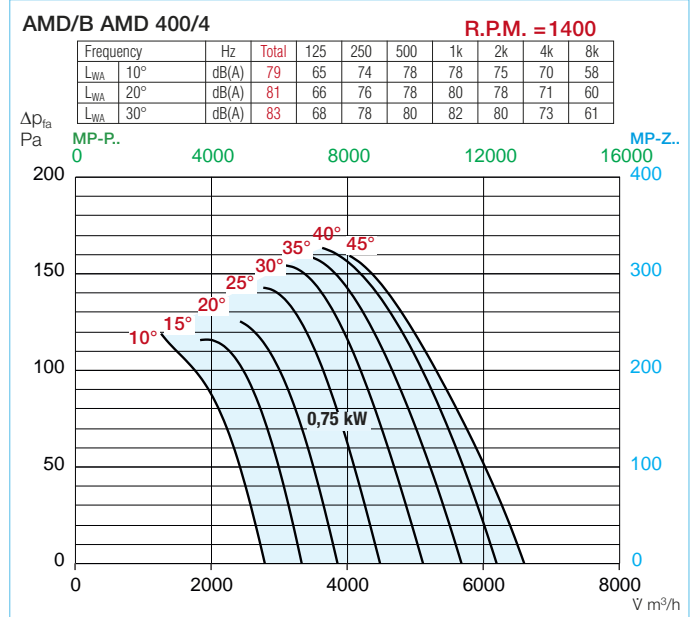
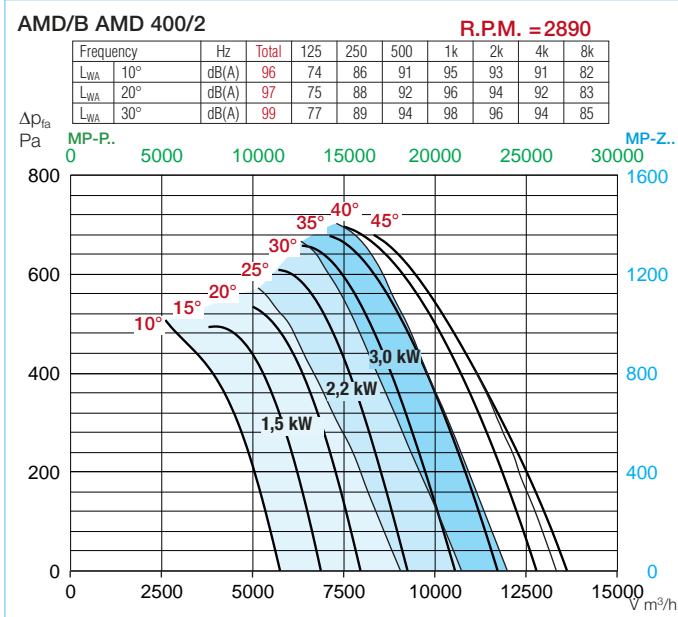
Scope of delivery: Extension ducts, back draught shutters, mounting bars (2 pcs), mounting feet (4 pcs) and assembly kits. Weight: 35 kg

**MP-P 400** Ref. No. 4889



a) For motorised shutters, for ventilation operation, see accessory pages

b) Type for B AMD: STSB 400 F400, No. 14743 \* Type assignment see table, last column



Information	Page	Accessory details	Pages
Technical description	46	Mounting accessories	146 on
Design of systems	3 on	Attenuators	151
<b>Special executions</b>		Gas warning systems, circuitry and control technology	152 on
Special execution with inspection opening (additional price) on request. Special execution with resistors, which are connected to the terminal box located on the outside of the casing (additional price), essential for operation in connection with frequency inverter or full motor protection switch, always specify when ordering.		Frequency inverter	162 on

Type	Ref. No.	R.P.M.	Air flow volume (FID)	Motor power (nominal)	Voltage	Current at full load	Dim. B Motor protrusion	Wiring diagram	Max. air flow temp. <sup>1)</sup>	Nominal weight (net)	Full motor protection or pole switch	Anti vibration mounts <sup>4)</sup>			
		min <sup>-1</sup>	V m <sup>3</sup> /h	kW	V	A	mm	No.	+°C	ca. kg	Type Ref. No.	Type	Ref. No.	Type	Ref. No.
<b>40° 3 Phase motor, 400 V, 50 Hz, protection to IP 55</b>															
AMD 400/4 0,75 kW	3102	1400	6900	0,75	400	1,78	80	470	40	34	MSA <sup>5)</sup> 1289	SDD 1	1452	SDZ 1	1454
AMD 400/2 1,5 kW	3098	2890	8200	1,5	400	3,16	100	470	40	37	MSA <sup>5)</sup> 1289	SDD 1	1452	SDZ 1	1454
AMD 400/2 2,2 kW	3099	2890	10800	2,2	400	4,48	130	470	40	41	MSA <sup>5)</sup> 1289	SDD 1	1452	SDZ 1	1454
AMD 400/2 3 kW	3100	2891	12300	3	400	5,86	170	470	40	48	MSA <sup>5)</sup> 1289	SDD 1	1452	SDZ 1	1454
<b>40° 2 speed motor, pole-switching (Dahlander winding Y/YY), 400 V / 3 ph./ 50 Hz, protection to IP 55</b>															
Pole switch surface mounted															
AMD 400/4/2 0,4/1,9 kW	3101	1380/2840	4600/9500	0,4/1,9	400	1,07/4,14	130	471	40	45	PDA 12 <sup>3)</sup> 5081	SDD 1	1452	SDZ 1	1454
AMD 400/4/2 0,65/2,5 kW	3104	1400/2840	5400/11200	0,65/2,5	400	1,76/5,06	170	471	40	55	PDA 12 <sup>3)</sup> 5081	SDD 1	1452	SDZ 1	1454
AMD 400/4/2 0,8/3,1 kW	3105	1400/2880	6000/12400	0,8/3,1	400	2,11/6,27	170	471	40	55	PDA 12 <sup>3)</sup> 5081	SDD 1	1452	SDZ 1	1454
<b>F300 3 Phase motor, 400 V, 50 Hz, protection to IP 55</b>															
B AMD 400/4 0,75 kW F300	3350	1410	7000	0,75	400	1,63	59	498	40 <sup>2)</sup> /300	32	–	SDD 1F	1942	SDZ 1F	1943
B AMD 400/2 1,5 kW F300	3346	2830	8500	1,5	400	3,14	78	498	40 <sup>2)</sup> /300	37	–	SDD 1F	1942	SDZ 1F	1943
B AMD 400/2 2,2 kW F300	3347	2840	10600	2,2	400	4,58	103	498	40 <sup>2)</sup> /300	40	–	SDD 1F	1942	SDZ 1F	1943
B AMD 400/2 3 kW F300	3348	2880	12300	3	400	5,92	140	498	40 <sup>2)</sup> /300	48	–	SDD 1F	1942	SDZ 1F	1943
<b>F300 2 speed motor, pole-switching (Dahlander winding Y/YY), 400 V / 3 ph./ 50 Hz, protection to IP 55</b>															
Pole switch surface mounted															
B AMD 400/4/2 0,37/1,5 kW F300	3349	1435/2900	4100/8400	0,37/1,5	400	1,25/3,54	78	471	40 <sup>2)</sup> /300	39	PDA 12 <sup>3)</sup> 5081	SDD 1F	1942	SDZ 1F	1943
B AMD 400/4/2 0,5/2,2 kW F300	3351	1420/2845	5300/10600	0,5/2,2	400	1,54/4,63	103	471	40 <sup>2)</sup> /300	41	PDA 12 <sup>3)</sup> 5081	SDD 1F	1942	SDZ 1F	1943
B AMD 400/4/2 0,8/3,1 kW F300	3352	1430/2890	6100/12300	0,8/3,1	400	1,99/6,2	140	471	40 <sup>2)</sup> /300	52	PDA 12 <sup>3)</sup> 5081	SDD 1F	1942	SDZ 1F	1943
<b>F400 3 Phase motor, 400 V, 50 Hz, protection to IP 55</b>															
B AMD 400/4 0,75 kW F400	3195	1410	7000	0,75	400	1,63	59	498	40 <sup>2)</sup> /400	32	–	SDD 1F	1942	SDZ 1F	1943
B AMD 400/2 1,5 kW F400	3188	2830	8500	1,5	400	3,14	78	498	40 <sup>2)</sup> /400	37	–	SDD 1F	1942	SDZ 1F	1943
B AMD 400/2 2,2 kW F400	3189	2840	10600	2,2	400	4,58	103	498	40 <sup>2)</sup> /400	40	–	SDD 1F	1942	SDZ 1F	1943
B AMD 400/2 3 kW F400	3190	2880	12300	3	400	5,92	140	498	40 <sup>2)</sup> /400	48	–	SDD 1F	1942	SDZ 1F	1943
<b>F400 2 speed motor, pole-switching (Dahlander winding Y/YY), 400 V / 3 ph./ 50 Hz, protection to IP 55</b>															
Pole switch surface mounted															
B AMD 400/4/2 0,37/1,5 kW F400	3191	1440/2900	4100/8400	0,37/1,5	400	1,25/3,54	78	471	40 <sup>2)</sup> /400	39	PDA 12 <sup>3)</sup> 5081	SDD 1F	1942	SDZ 1F	1943
B AMD 400/4/2 0,5/2,2 kW F400	3196	1420/2840	5300/10600	0,5/2,2	400	1,54/4,63	103	471	40 <sup>2)</sup> /400	41	PDA 12 <sup>3)</sup> 5081	SDD 1F	1942	SDZ 1F	1943
B AMD 400/4/2 0,8/3,1 kW F400	3197	1440/2890	6100/12300	0,8/3,1	400	1,99/6,2	140	471	40 <sup>2)</sup> /400	52	PDA 12 <sup>3)</sup> 5081	SDD 1F	1942	SDZ 1F	1943

Pitch angle is mandatory when ordering. <sup>1)</sup> During ventilation / smoke extraction (nonrecurring 120 minutes). <sup>2)</sup> Higher air flow temperatures during continuous operation (ventilation mode) on request. <sup>3)</sup> Flush mounted version see product page switches. <sup>4)</sup> With Z-/P-design due to higher total weight, type assignment according to tables on page 150. <sup>5)</sup> Requires fan in special execution with PTC-resistors connected to the terminal box located on the outside of the casing (additional price).

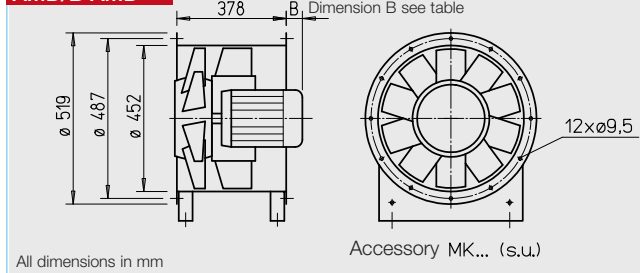


((Fig. incl. mounting feet (MK, accessories))

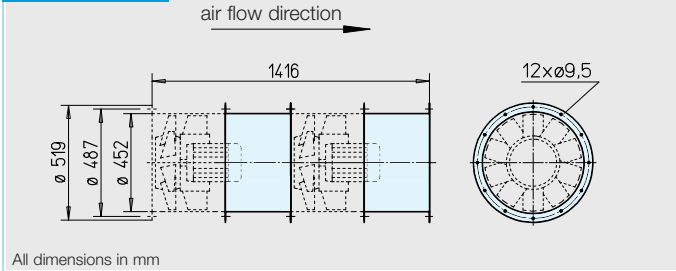
**■ Certification**

The smoke and heat exhaust fans B AMD were tested to DIN EN 12101-3., the DIBt approvals are applied. CE certificate of conformity 1511 CPD 504 (F300), 1511 CPD 505 (F400).

**AMD/B AMD**



**MP-Z 450**



**■ Application, casing, air flow direction, etc.**  
see page 46.

**■ Impeller**

- Hub and blades in corrosion-resistant aluminium alloy. Ten aerodynamically profiled blades achieve highest efficiency and pressure rates in cooperation with the guide vane.
- Dynamically balanced to DIN ISO 1940-1, class 6.3 for low-vibration operation.
- The pitch angle of the blades is adjustable at standstill and factory set.

**■ Motor**

- Series AMD: Maintenance-free 3-phase a.c. standard motor, protection to IP 55, insulation class F.
- Series B AMD: Direct by IEC-three phase a.c. motor in temperature-resistant execution. Protection to IP 55. Insulation class H. Fire-resistant external cable with sheathing.

**■ Motor protrusion**

- With some types, the motor casing projects beyond. Protrusion dimension B mm is to be observed according to the type table.

**■ Motor protection**

- The types are to be protected by means of motor protection switch on site. With the B AMD types this is to be bridged in case of smoke extraction.

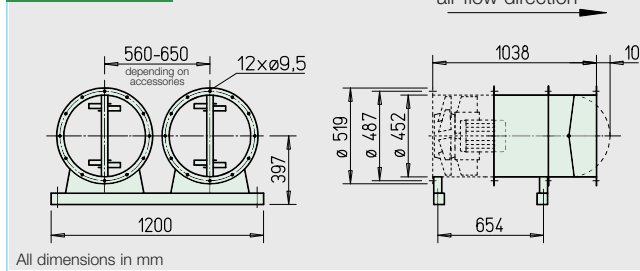
**■ Electrical connection**

- Series AMD: Standard terminal box (protection to IP 55) from polymer, mounted on the outside of the casing.
- Series B AMD: Standard terminal box (protection to IP 55, from aluminium diecasting), mounted on the outside of the casing.

**■ Air flow temperatures**

- Series AMD: Suitable for ventilation from -20 °C to +40 °C continuous temperature. Higher air flow temperatures for continuous operation on request.
- Series B AMD: Like series AMD, however, in addition for smoke extraction according to the temperature classification to 300 °C/120 minutes or 400 °C/120 minutes.

**MP-P 450**



**■ Mounting package MP-Z for two-stage Z-unit**

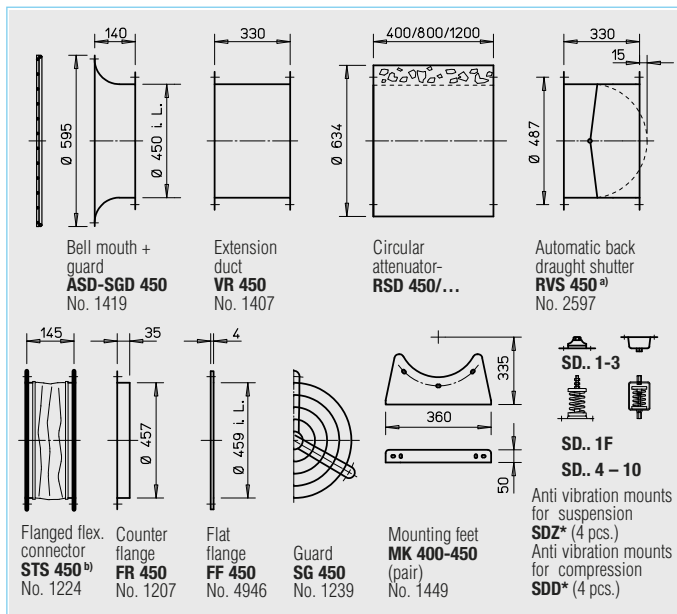
To arrange two identical fans in a row, for highest pressure rates. Scope of delivery: Extension ducts (2 pcs) and assembly kit. Weight: 14 kg

**MP-Z 450** Ref. No. 4906

**■ Mounting package MP-P for parallel P-unit**

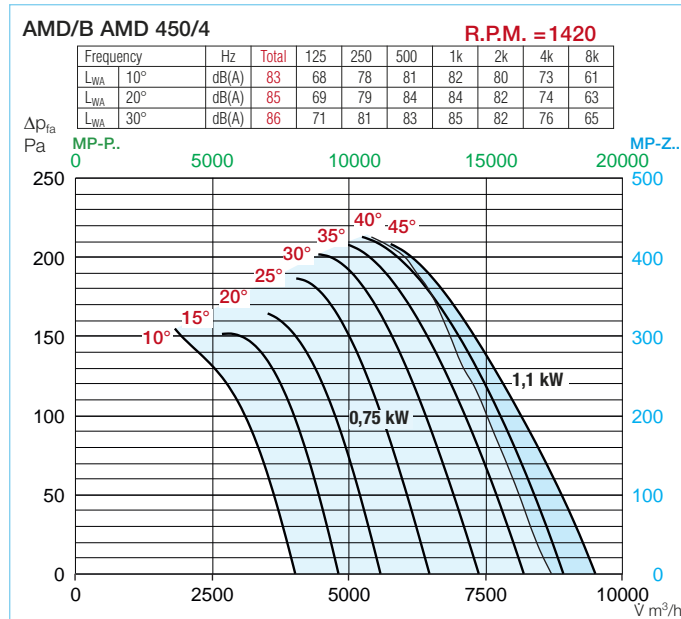
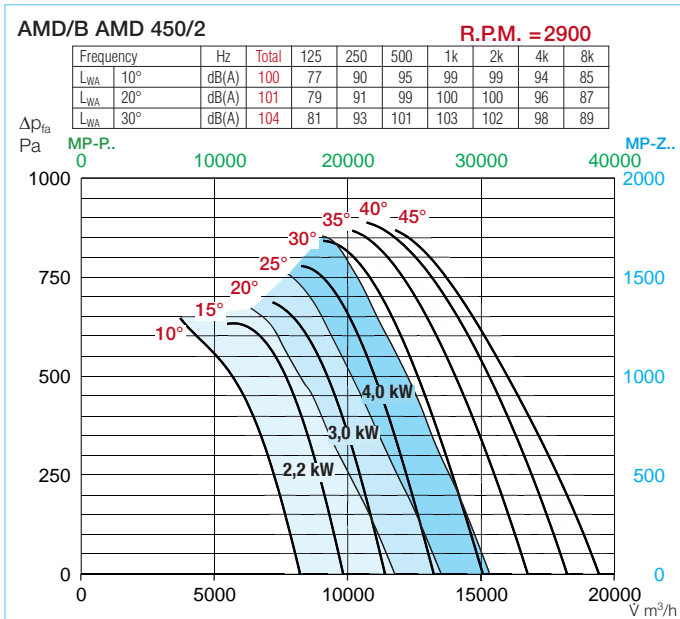
To arrange two identical fans side by side, for highest air flow rates. Scope of delivery: Extension ducts, back draught shutters, mounting bars (2 pcs), mounting feet (4 pcs) and assembly kits. Weight: 43 kg

**MP-P 450** Ref. No. 4890



<sup>a)</sup> For motorised shutters, for ventilation operation, see accessory pages

<sup>b)</sup> Type for B AMD: STSB 450 F400, No. 14742 \* Type assignment see table, last column



Information	Page	Accessory details	Pages
Technical description	46	Mounting accessories	146 on
Design of systems	3 on	Attenuators	151
<b>Special executions</b>		Gas warning systems, circuitry and control technology	152 on
Special execution with inspection opening (additional price) on request. Special execution with resistors, which are connected to the terminal box located on the outside of the casing (additional price), essential for operation in connection with frequency inverter or full motor protection switch.		Frequency inverter	162 on

Type	Ref. No.	R.P.M.	Air flow volume (FID)	Motor power (nominal)	Voltage	Current at full load	Dim. B Motor protrusion	Wiring diagram	Max. air flow temp. <sup>1)</sup>	Nominal weight (net)	Full motor protection or pole switch		Anti vibration mounts <sup>4)</sup>			
											Type	Ref. No.	Type	Ref. No.		
<b>40° 3 Phase motor, 400 V, 50 Hz, protection to IP 55</b>																
AMD 450/4 0,75 kW	3109	1400	9000	0,75	400	1,78	15	470	40	39	MSA <sup>6)</sup>	1289	SDD 1	1452	SDZ 1	1454
AMD 450/4 1,1 kW	3110	1440	10200	1,1	400	2,53	40	470	40	43	MSA <sup>6)</sup>	1289	SDD 1	1452	SDZ 1	1454
AMD 450/2 2,2 kW	3106	2890	10900	2,2	400	4,48	65	470	40	46	MSA <sup>6)</sup>	1289	SDD 1	1452	SDZ 1	1454
AMD 450/2 3 kW	3107	2891	12400	3	400	5,86	105	470	40	53	MSA <sup>6)</sup>	1289	SDD 1	1452	SDZ 1	1454
AMD 450/2 4 kW	3108	2914	15000	4	400 <sup>5)</sup>	7,36	155	498	40	56	MSA <sup>6)</sup>	1289	SDD 1	1452	SDZ 1	1454
<b>40° 2 speed motor, pole-switching (Dahlander winding Y/YY), 400 V / 3 ph./ 50 Hz, protection to IP 55</b>																
Pole switch surface mounted																
AMD 450/4/2 0,65/2,5 kW	3121	1400/2840	5700/11700	0,65/2,5	400	1,76/5,06	40	471	40	60	PDA 12 <sup>3)</sup>	5081	SDD 1	1452	SDZ 1	1454
AMD 450/4/2 0,8/3,1 kW	3111	1400/2880	6200/12400	0,8/3,1	400	2,11/6,27	65	471	40	60	PDA 12 <sup>3)</sup>	5081	SDD 1	1452	SDZ 1	1454
AMD 450/4/2 1,1/4,4 kW	3113	1400/2890	7700/15800	1,1/4,4	400	2,68/8,8	155	471	40	66	PDA 12 <sup>3)</sup>	5081	SDD 1	1452	SDZ 2	1455
<b>F300 3 Phase motor, 400 V, 50 Hz, protection to IP 55</b>																
B AMD 450/4 0,75 kW F300	3356	1410	9200	0,75	400	1,63	0	498	40 <sup>2)</sup> /300	37	–	–	SDD 1F	1942	SDZ 1F	1943
B AMD 450/4 1,1 kW F300	3357	1440	9900	1,1	400	2,40	16	498	40 <sup>2)</sup> /300	40	–	–	SDD 1F	1942	SDZ 1F	1943
B AMD 450/2 2,2 kW F300	3353	2840	11200	2,2	400	4,58	41	498	40 <sup>2)</sup> /300	45	–	–	SDD 1F	1942	SDZ 1F	1943
B AMD 450/2 3 kW F300	3354	2880	12700	3	400	5,92	78	470	40 <sup>2)</sup> /300	53	–	–	SDD 1F	1942	SDZ 1F	1943
B AMD 450/2 4 kW F300	3355	2870	15400	4	400 <sup>5)</sup>	7,72	96	498	40 <sup>2)</sup> /300	62	–	–	SDD 1F	1942	SDZ 1F	1943
<b>F300 2 speed motor, pole-switching (Dahlander winding Y/YY), 400 V / 3 ph./ 50 Hz, protection to IP 55</b>																
Pole switch surface mounted																
B AMD 450/4/2 0,5/2,2 kW F300	3358	1420/2840	5600/11200	0,5/2,2	400	1,54/4,63	41	471	40 <sup>2)</sup> /300	46	PDA 12 <sup>3)</sup>	5081	SDD 1F	1942	SDZ 1F	1943
B AMD 450/4/2 0,8/3,1 kW F300	3359	1440/2890	6400/12700	0,8/3,1	400	1,99/6,2	78	471	40 <sup>2)</sup> /300	57	PDA 12 <sup>3)</sup>	5081	SDD 1F	1942	SDZ 1F	1943
<b>F400 3 Phase motor, 400 V, 50 Hz, protection to IP 55</b>																
B AMD 450/4 0,75 kW F400	3205	1410	9200	0,75	400	1,63	0	498	40 <sup>2)</sup> /400	37	–	–	SDD 1F	1942	SDZ 1F	1943
B AMD 450/4 1,1kW F400	3206	1440	9900	1,1	400	2,4	16	498	40 <sup>2)</sup> /400	40	–	–	SDD 1F	1942	SDZ 1F	1943
B AMD 450/2 2,2 kW F400	3198	2840	11200	2,2	400	4,58	41	498	40 <sup>2)</sup> /400	45	–	–	SDD 1F	1942	SDZ 1F	1943
B AMD 450/2 3 kW F400	3199	2880	12700	3	400	5,92	78	498	40 <sup>2)</sup> /400	53	–	–	SDD 1F	1942	SDZ 1F	1943
B AMD 450/2 4 kW F400	3200	2870	15400	4	400 <sup>5)</sup>	7,72	96	498	40 <sup>2)</sup> /400	62	–	–	SDD 1F	1942	SDZ 1F	1943
<b>F400 2 speed motor, pole-switching (Dahlander winding Y/YY), 400 V / 3 ph./ 50 Hz, protection to IP 55</b>																
Pole switch surface mounted																
B AMD 450/4/2 0,5/2,2 kW F400	3207	1420/2840	5600/11200	0,5/2,2	400	1,54/4,63	41	471	40 <sup>2)</sup> /400	46	PDA 12 <sup>3)</sup>	5081	SDD 1F	1942	SDZ 1F	1943
B AMD 450/4/2 0,8/3,1 kW F400	3208	1440/2890	6400/12700	0,8/3,1	400	1,99/6,2	78	471	40 <sup>2)</sup> /400	57	PDA 12 <sup>3)</sup>	5081	SDD 1F	1942	SDZ 1F	1943

Pitch angle is mandatory when ordering. <sup>1)</sup> During ventilation / smoke extraction (nonrecurring 120 minutes). <sup>2)</sup> Higher air flow temperatures during continuous operation (ventilation mode) on request. <sup>3)</sup> Flush mounted version see product page switches. <sup>4)</sup> With Z-/P-design due to higher total weight, type assignment according to tables on page 150. <sup>5)</sup> Y/Δ starting. <sup>6)</sup> Requires fan in special execution with PTC-resistors connected to the terminal box located on the outside of the casing (additional price).



((Fig. incl. mounting feet (MK, accessories))

**■ Certification**

The smoke and heat exhaust fans B AMD were tested to DIN EN 12101-3., the DIBt approvals are applied. CE certificate of conformity 1511 CPD 504 (F300), 1511 CPD 505 (F400)..

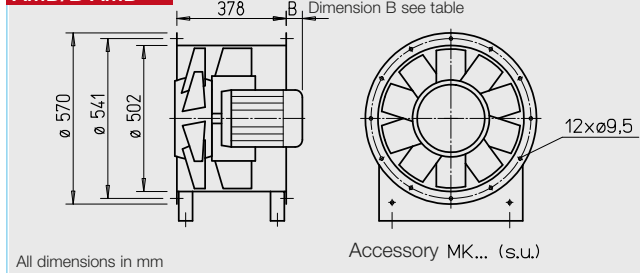
**■ Information**

Information	Page
Technical description	46
Design of systems	3 on

**■ Special executions**

see page 55.

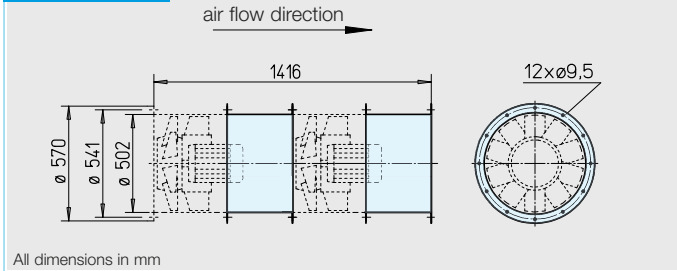
**AMD/B AMD**



All dimensions in mm

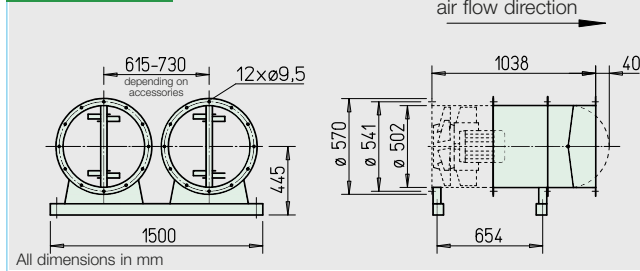
Accessory MK... (s.u.)

**MP-Z 500**



All dimensions in mm

**MP-P 500**



All dimensions in mm

**■ Application, casing, air flow direction, etc.**  
see page 46.

**■ Impeller**

- Hub and blades in corrosion-resistant aluminium alloy. Ten aerodynamically profiled blades achieve highest efficiency and pressure rates in cooperation with the guide vane.
- Dynamically balanced to DIN ISO 1940-1, class 6.3 for low-vibration operation.
- The pitch angle of the blades is adjustable at standstill and factory set.

**■ Motor**

- Series AMD: Maintenance-free 3-phase a.c. standard motor, protection to IP 55, insulation class F.
- Series B AMD: Direct by IEC-three phase a.c. motor in temperature-resistant execution. Protection to IP 55. Insulation class H. Fire-resistant external cable with sheathing.

**■ Motor protrusion**

- With some types, the motor casing projects beyond. Protrusion dimension B mm is to be observed according to the type table.

**■ Motor protection**

- The types are to be protected by means of motor protection switch on site. With the B AMD types this is to be bridged in case of smoke extraction.

**■ Electrical connection**

- Series AMD: Standard terminal box (protection to IP 55) from polymer, mounted on the outside of the casing.
- Series B AMD: Standard terminal box (protection to IP 55, from aluminium diecasting), mounted on the outside of the casing.

**■ Air flow temperatures**

- Series AMD: Suitable for ventilation from -20 °C to +40 °C continuous temperature. Higher air flow temperatures for continuous operation on request.
- Series B AMD: Like series AMD, however, in addition for smoke extraction according to the temperature classification to 300 °C/120 minutes or 400 °C/120 minutes.

**■ Mounting package MP-Z for two-stage Z-unit**

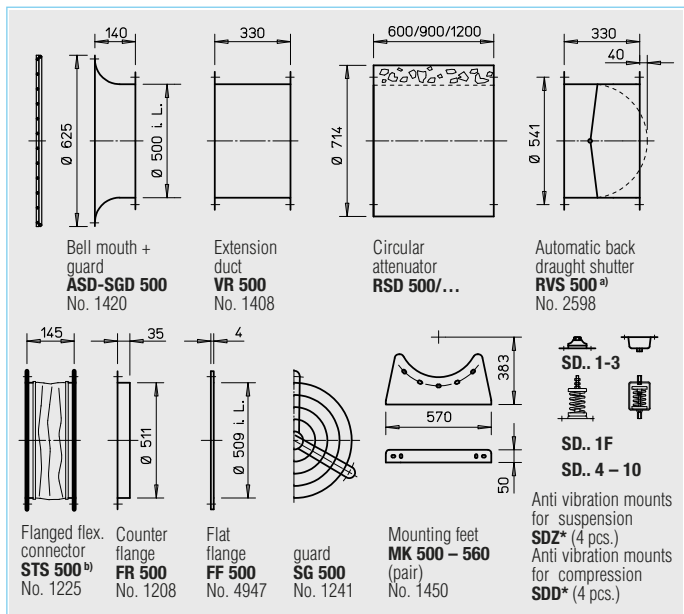
To arrange two identical fans in a row, for highest pressure rates. Scope of delivery: Extension ducts (2 pcs) and assembly kit. Weight: 15 kg

**MP-Z 500** Ref. No. 4907

**■ Mounting package MP-P for parallel P-unit**

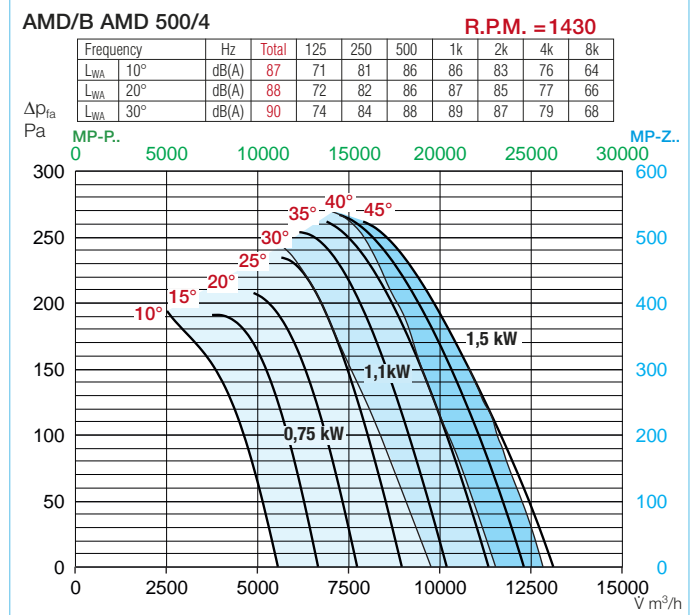
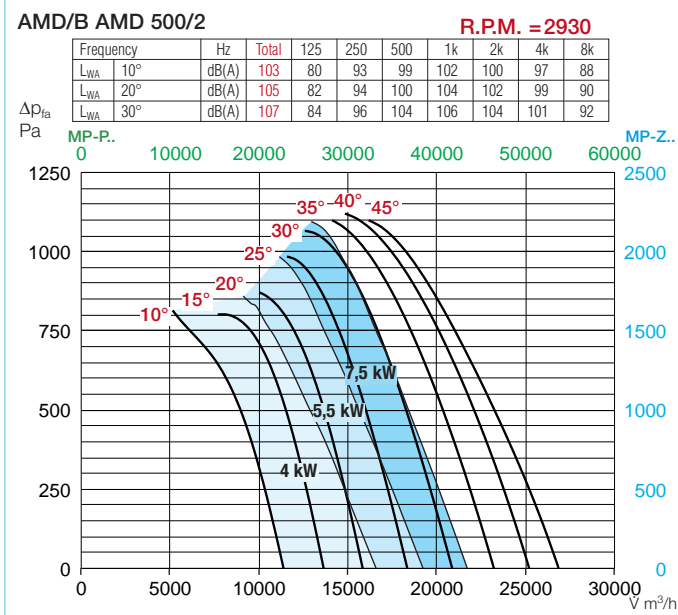
To arrange two identical fans side by side, for highest air flow rates. Scope of delivery: Extension ducts, back draught shutters, mounting bars (2 pcs), mounting feet (4 pcs) and assembly kits. Weight: 55 kg

**MP-P 500** Ref. No. 4891



a) For motorised shutters, for ventilation operation, see accessory pages

b) Type for B AMD: STSB 500 F400, No. 1915 \* Type assignment see table, last column



Type	Ref. No.	R.P.M.	Air flow volume (FID)	Motor power (nominal)	Voltage	Current at full load	Dim. B Motor protrusion	Wiring diagram	Max. air flow temp. <sup>1)</sup>	Nominal weight (net)	Full motor protection or pole switch	Anti vibration mounts <sup>4)</sup>			
												Compression		Suspension	
		min <sup>-1</sup>	V m <sup>3</sup> /h	kW	V	A	mm	No.	+°C	ca. kg	Type Ref. No.	Type Ref. No.	Type Ref. No.	Type Ref. No.	
<b>40° 3 Phase motor, 400 V, 50 Hz, protection to IP 55</b>															
AMD 500/4 0,75 kW	3118	1400	9500	0,75	400	1,78	35	470	40	45	MSA <sup>6)</sup> 1289	SDD 1 1452	SDZ 1 1454		
AMD 500/4 1,1 kW	3119	1440	11600	1,1	400	2,53	60	470	40	48	MSA <sup>6)</sup> 1289	SDD 1 1452	SDZ 1 1454		
AMD 500/4 1,5 kW	3122	1445	13300	1,5	400	3,39	85	470	40	51	MSA <sup>6)</sup> 1289	SDD 1 1452	SDZ 1 1454		
AMD 500/2 4 kW	3115	2914	15700	4	400 <sup>5)</sup>	7,36	175	498	40	62	MSA <sup>6)</sup> 1289	SDD 1 1452	SDZ 2 1455		
AMD 500/2 5,5 kW	3116	2937	17600	5,5	400 <sup>5)</sup>	10,6	180	498	40	78	MSA <sup>6)</sup> 1289	SDD 1 1452	SDZ 2 1455		
AMD 500/2 7,5 kW	3117	2940	21600	7,5	400 <sup>5)</sup>	13,9	220	498	40	83	MSA <sup>6)</sup> 1289	SDD 2 1453	SDZ 2 1455		
<b>40° 2 speed motor, pole-switching (Dahlander winding Y/YY), 400 V / 3 ph./ 50 Hz, protection to IP 55</b> Pole switch surface mounted															
AMD 500/8/4 0,22/1,0 kW	3275	690/1400	5700/11400	0,22/1,0	400	0,88/2,35	60	471	40	53	PDA 12 <sup>3)</sup> 5081	SDD 1 1452	SDZ 1 1454		
AMD 500/8/4 0,3/1,3 kW	3276	690/1400	6300/12700	0,3/1,3	400	1,18/3,1	85	471	40	56	PDA 12 <sup>3)</sup> 5081	SDD 1 1452	SDZ 1 1454		
AMD 500/4/2 1,4/5,9 kW	3273	1400/2900	9100/18600	1,4/5,9	400	3,33/11,3	180	471	40	98	PDA 12 <sup>3)</sup> 5081	SDD 2 1453	SDZ 2 1455		
AMD 500/4/2 2,0/8,0 kW	3274	1420/2900	10900/22600	2,0/8,0	400	4,52/14,9	220	471	40	109	PDA 25 5081	SDD 2 1453	SDZ 2 1455		
<b>F300 3 Phase motor, 400 V, 50 Hz, protection to IP 55</b>															
B AMD 500/4 0,75 kW F300	3363	1410	10100	0,75	400	1,63	18	498	40 <sup>2)</sup> /300	43	–	SDD 1F 1942	SDZ 1F 1943		
B AMD 500/4 1,1 kW F300	3364	1440	11700	1,1	400	2,4	37	498	40 <sup>2)</sup> /300	49	–	SDD 1F 1942	SDZ 1F 1943		
B AMD 500/4 1,5 kW F300	3365	1440	13300	1,5	400	3,26	62	498	40 <sup>2)</sup> /300	58	–	SDD 1F 1942	SDZ 1F 1943		
B AMD 500/2 4 kW F300	3360	2870	16100	4	400 <sup>5)</sup>	7,72	117	498	40 <sup>2)</sup> /300	68	–	SDD 1F 1942	SDZ 1F 1943		
B AMD 500/2 5,5 kW F300	3361	2910	18100	5,5	400 <sup>5)</sup>	10,5	153	498	40 <sup>2)</sup> /300	72	–	SDD 4 1944	SDZ 4 1945		
B AMD 500/2 7,5 kW F300	3362	2910	21800	7,5	400 <sup>5)</sup>	14,1	192	498	40 <sup>2)</sup> /300	90	–	SDD 4 1944	SDZ 4 1945		
<b>F300 2 speed motor, pole-switching (Dahlander winding Y/YY), 400 V / 3 ph./ 50 Hz, protection to IP 55</b> Pole switch surface mounted															
B AMD 500/8/4 0,3/1,2 kW F300	3368	700/1430	5800/11700	0,3/1,2	400	1,95/2,92	62	471	40 <sup>2)</sup> /300	50	PDA 12 <sup>3)</sup> 5081	SDD 1F 1942	SDZ 1F 1943		
B AMD 500/8/4 0,55/2,2 kW F300	3369	700/1430	6500/13300	0,55/2,2	400	2,0/4,84	99	471	40 <sup>2)</sup> /300	60	PDA 12 <sup>3)</sup> 5081	SDD 1F 1942	SDZ 1F 1943		
B AMD 500/4/2 1,1/4,4 kW F300	3366	1440/2890	8200/16400	1,1/4,4	400	2,79/8,59	117	471	40 <sup>2)</sup> /300	73	PDA 12 <sup>3)</sup> 5081	SDD 4 1944	SDZ 4 1945		
B AMD 500/4/2 2,0/8,0 kW F300	3367	1470/2930	11400/22700	2,0/8,0	400	4,83/15,3	153	471	40 <sup>2)</sup> /300	97	PDA 25 5060	SDD 4 1944	SDZ 4 1945		
<b>F400 3 Phase motor, 400 V, 50 Hz, protection to IP 55</b>															
B AMD 500/4 0,75 kW F400	3213	1410	10100	0,75	400	1,63	18	498	40 <sup>2)</sup> /400	43	–	SDD 1F 1942	SDZ 1F 1943		
B AMD 500/4 1,1 kW F400	3214	1440	11700	1,1	400	2,4	37	498	40 <sup>2)</sup> /400	49	–	SDD 1F 1942	SDZ 1F 1943		
B AMD 500/4 1,5 kW F400	3215	1440	13300	1,5	400	3,26	62	498	40 <sup>2)</sup> /400	58	–	SDD 1F 1942	SDZ 1F 1943		
B AMD 500/2 4 kW F400	3210	2870	16100	4	400 <sup>5)</sup>	7,72	117	498	40 <sup>2)</sup> /400	68	–	SDD 1F 1942	SDZ 1F 1943		
B AMD 500/2 5,5 kW F400	3211	2910	18100	5,5	400 <sup>5)</sup>	10,5	153	498	40 <sup>2)</sup> /400	72	–	SDD 4 1944	SDZ 4 1945		
B AMD 500/2 7,5 kW F400	3212	2910	21800	7,5	400 <sup>5)</sup>	14,1	192	498	40 <sup>2)</sup> /400	90	–	SDD 4 1944	SDZ 4 1945		
<b>F400 2 speed motor, pole-switching (Dahlander winding Y/YY), 400 V / 3 ph./ 50 Hz, protection to IP 55</b> Pole switch surface mounted															
B AMD 500/8/4 0,3/1,2 kW F400	3218	700/1430	5800/11700	0,3/1,2	400	1,95/2,92	62	471	40 <sup>2)</sup> /400	50	PDA 12 <sup>3)</sup> 5081	SDD 1F 1942	SDZ 1F 1943		
B AMD 500/8/4 0,55/2,2 kW F400	3219	700/1430	6500/13300	0,55/2,2	400	2,0/4,84	99	471	40 <sup>2)</sup> /400	60	PDA 12 <sup>3)</sup> 5081	SDD 1F 1942	SDZ 1F 1943		
B AMD 500/4/2 1,1/4,4 kW F400	3216	1440/2890	8200/16400	1,1/4,4	400	2,79/8,59	117	471	40 <sup>2)</sup> /400	73	PDA 12 <sup>3)</sup> 5081	SDD 4 1944	SDZ 4 1945		
B AMD 500/4/2 2,0/8,0 kW F400	3217	1470/2930	11380/22700	2,0/8,0	400	4,83/15,3	153	471	40 <sup>2)</sup> /400	97	PDA 25 5060	SDD 4 1944	SDZ 4 1945		

Pitch angle is mandatory when ordering. <sup>1)</sup> During ventilation / smoke extraction (nonrecurring 120 minutes). <sup>2)</sup> Higher air flow temperatures during continuous operation (ventilation mode) on request. <sup>3)</sup> Flush mounted version see product page switches. <sup>4)</sup> With Z-/P-design due to higher total weight, type assignment according to tables on page 150. <sup>5)</sup> Y/Δ starting. <sup>6)</sup> Requires fan in special execution with PTC-resistors connected to the terminal box located on the outside of the casing (additional price).



((Fig. incl. mounting feet (MK, accessories))

**■ Certification**

The smoke and heat exhaust fans B AMD were tested to DIN EN 12101-3., the DIBt approvals are applied. CE certificate of conformity 1511 CPD 504 (F300), 1511 CPD 505 (F400).

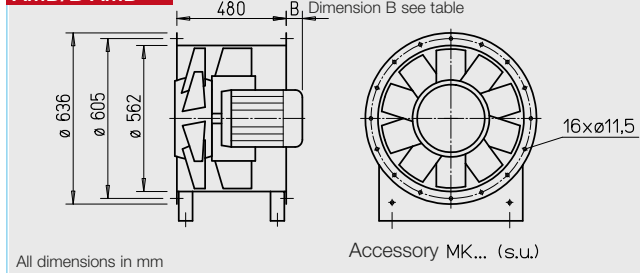
**■ Information**

Information	Page
Technical description	46
Design of systems	3 on

**■ Special executions**

see page 55.

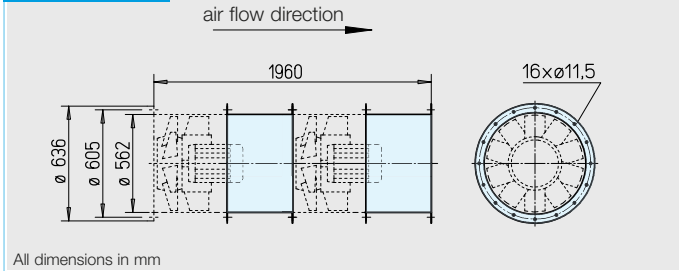
**AMD/B AMD**



All dimensions in mm

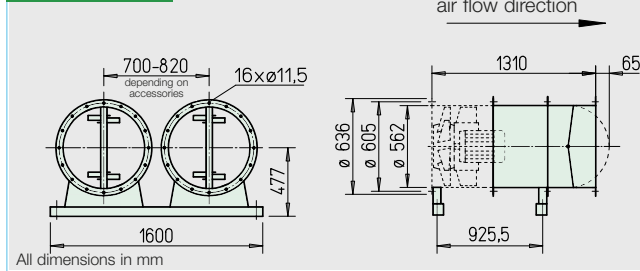
Accessory MK... (s.u.)

**MP-Z 560**



All dimensions in mm

**MP-P 560**



All dimensions in mm

**■ Application, casing, air flow direction, etc.**  
see page 46.

**■ Impeller**

- Hub and blades in corrosion-resistant aluminium alloy. Ten aerodynamically profiled blades achieve highest efficiency and pressure rates in cooperation with the guide vane.
- Dynamically balanced to DIN ISO 1940-1, class 6.3 for low-vibration operation.
- The pitch angle of the blades is adjustable at standstill and factory set.

**■ Motor**

- Series AMD: Maintenance-free 3-phase a.c. standard motor, protection to IP 55, insulation class F.
- Series B AMD: Direct by IEC-three phase a.c. motor in temperature-resistant execution. Protection to IP 55. Insulation class H. Fire-resistant external cable with sheathing.

**■ Motor protrusion**

- With some types, the motor casing projects beyond. Protrusion dimension B mm is to be observed according to the type table.

**■ Motor protection**

- The types are to be protected by means of motor protection switch on site. With the B AMD types this is to be bridged in case of smoke extraction.

**■ Electrical connection**

- Series AMD: Standard terminal box (protection to IP 55) from polymer, mounted on the outside of the casing.
- Series B AMD: Standard terminal box (protection to IP 55, from aluminium diecasting), mounted on the outside of the casing.

**■ Air flow temperatures**

- Series AMD: Suitable for ventilation from -20 °C to +40 °C continuous temperature. Higher air flow temperatures for continuous operation on request.
- Series B AMD: Like series AMD, however, in addition for smoke extraction according to the temperature classification to 300 °C/120 minutes or 400 °C/120 minutes.

**■ Mounting package MP-Z for two-stage Z-unit**

To arrange two identical fans in a row, for highest pressure rates.

Scope of delivery: Extension ducts (2 pcs) and assembly kit. Weight: 32 kg

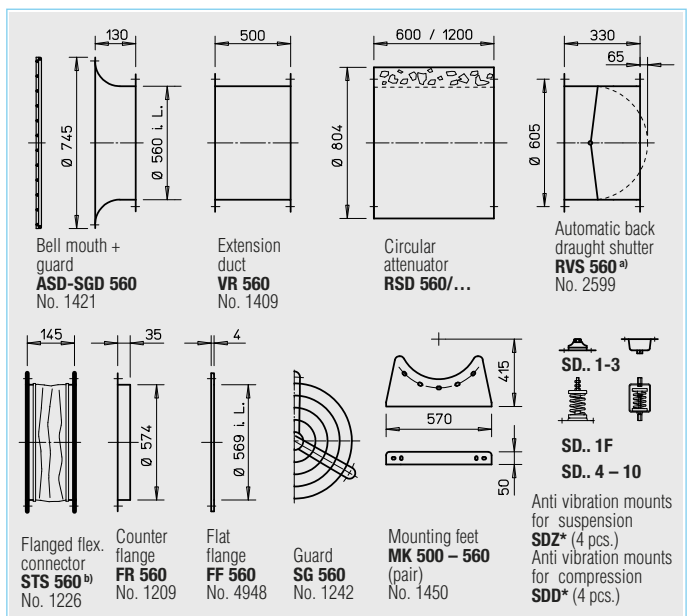
**MP-Z 560** Ref. No. 4908

**■ Mounting package MP-P for parallel P-unit**

To arrange two identical fans side by side, for highest air flow rates.

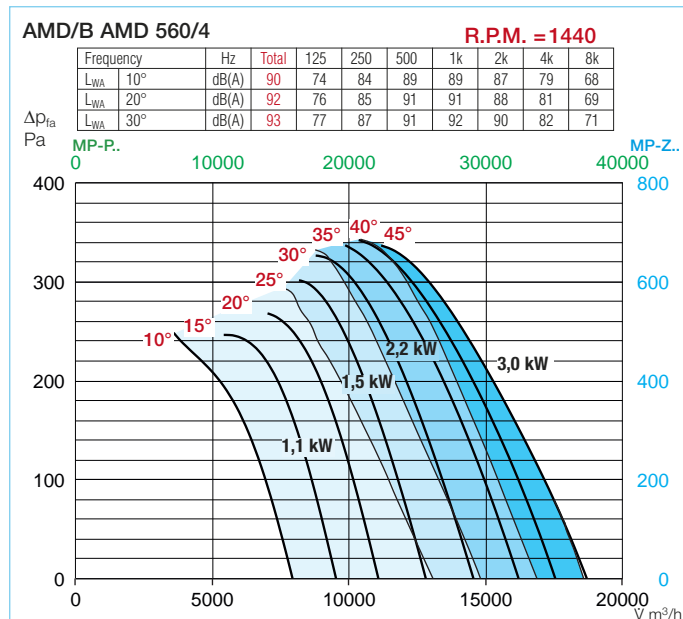
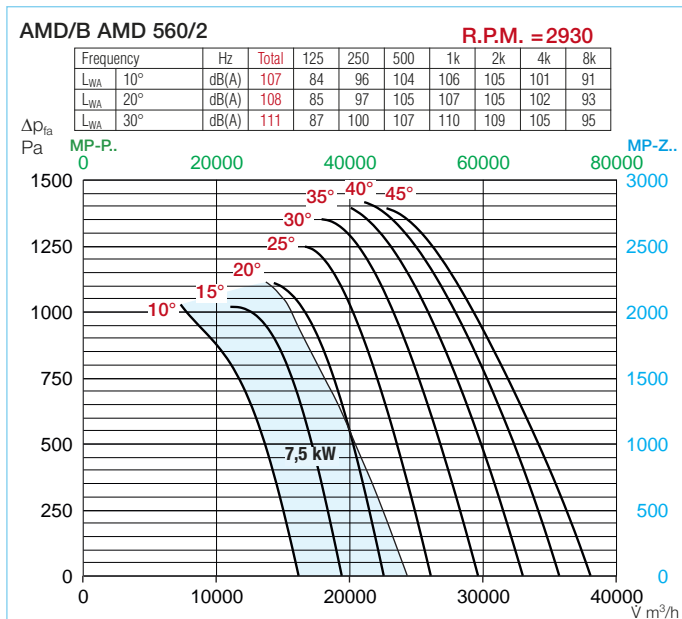
Scope of delivery: Extension ducts, back draught shutters, mounting bars (2 pcs), mounting feet (4 pcs) and assembly kits. Weight: 82 kg

**MP-P 560** Ref. No. 4892



<sup>a)</sup> For motorised shutters, for ventilation operation, see accessory pages

<sup>b)</sup> Type for B AMD: STSB 560 F400, No. 1916 \* Type assignment see table, last column



Type	Ref. No.	R.P.M.	Air flow volume (FID)	Motor power (nominal)	Voltage	Current at full load	Dim. B Motor protrusion	Wiring diagram	Max. air flow temp. <sup>1)</sup>	Nominal weight (net)	Full motor protection or pole switch	Anti vibration mounts <sup>4)</sup>			
												Compression		Suspension	
												Type	Ref. No.	Type	Ref. No.
<b>40° 3 Phase motor, 400 V, 50 Hz, protection to IP 55</b>															
AMD 560/4 1,1 kW	3281	1440	11900	1,1	400	2,53	0	470	40	58	MSA <sup>6)</sup> 1289	SDD 1	1452	SDZ 1	1454
AMD 560/4 1,5 kW	3282	1445	14800	1,5	400	3,39	0	470	40	61	MSA <sup>6)</sup> 1289	SDD 1	1452	SDZ 2	1455
AMD 560/4 2,2 kW	3285	1440	17600	2,2	400	4,64	40	470	40	71	MSA <sup>6)</sup> 1289	SDD 1	1452	SDZ 2	1455
AMD 560/4 3 kW	3286	1440	19600	3	400	6,18	40	470	40	77	MSA <sup>6)</sup> 1289	SDD 1	1452	SDZ 2	1455
AMD 560/2 7,5 kW	3279	2940	22000	7,5	400 <sup>5)</sup>	13,9	100	498	40	93	MSA <sup>6)</sup> 1289	SDD 2	1453	SDZ 2	1455
<b>40° 2 speed motor, pole-switching (Dahlander winding Y/YY), 400 V / 3 ph./ 50 Hz, protection to IP 55</b>												Pole switch surface mounted			
AMD 560/8/4 0,3/1,3 kW	3288	690/1400	6650/13290	0,3/1,3	400	0,88/3,35	0	471	40	66	PDA 12 <sup>3)</sup> 5081	SDD 1	1452	SDZ 2	1455
AMD 560/8/4 0,55/2,0 kW	3272	690/1400	8150/16500	0,55/2,0	400	1,18/3,1	0	471	40	76	PDA 12 <sup>3)</sup> 5081	SDD 1	1452	SDZ 2	1455
AMD 560/8/4 0,65/2,4 kW	3290	690/1420	8800/18200	0,65/2,4	400	2,68/4,97	40	471	40	76	PDA 12 <sup>3)</sup> 5081	SDD 1	1452	SDZ 2	1455
AMD 560/4/2 2,0/8,0 kW	3287	1420/2900	11300/23200	2,0/8,0	400	4,52/14,9	100	471	40	119	PDA 25 5060	SDD 2	1453	SDZ 2	1455
<b>F300 3 Phase motor, 400 V, 50 Hz, protection to IP 55</b>															
B AMD 560/4 1,1 kW F300	3391	1440	11900	1,1	400	2,4	0	498	40 <sup>2)</sup> /300	59	–	SDD 1F	1942	SDZ 1F	1943
B AMD 560/4 1,5 kW F300	3392	1440	14700	1,5	400	3,26	0	498	40 <sup>2)</sup> /300	68	–	SDD 1F	1942	SDZ 1F	1943
B AMD 560/4 2,2 kW F300	3393	1420	17700	2,2	400	4,64	0	498	40 <sup>2)</sup> /300	70	–	SDD 1F	1942	SDZ 1F	1943
B AMD 560/4 3 kW F300	3394	1420	19400	3	400	6,17	13	470	40 <sup>2)</sup> /300	73	–	SDD 4	1944	SDZ 4	1945
B AMD 560/2 7,5 kW F300	3389	2910	22600	7,5	400 <sup>5)</sup>	14,1	67	498	40 <sup>2)</sup> /300	100	–	SDD 4	1944	SDZ 4	1945
<b>F300 2 speed motor, pole-switching (Dahlander winding Y/YY), 400 V / 3 ph./ 50 Hz, protection to IP 55</b>												Pole switch surface mounted			
B AMD 560/8/4 0,4/1,6 kW F300	3396	700/1420	7300/14700	0,4/1,6	400	1,69/3,8	0	471	40 <sup>2)</sup> /300	67	PDA 12 <sup>3)</sup> 5081	SDD 1F	1942	SDZ 1F	1943
B AMD 560/8/4 0,55/2,2 kW F300	3397	700/1430	8700/17700	0,55/2,2	400	2,0/4,84	13	471	40 <sup>2)</sup> /300	70	PDA 12 <sup>3)</sup> 5081	SDD 1F	1942	SDZ 1F	1943
B AMD 560/8/4 0,7/2,8 kW F300	3398	690/1410	9400/19200	0,7/2,8	400	2,41/6,01	13	471	40 <sup>2)</sup> /300	73	PDA 12 <sup>3)</sup> 5081	SDD 4	1944	SDZ 4	1945
B AMD 560/4/2 2/8 kW F300	3395	1470/2930	11700/23200	2,0/8,0	400	4,83/15,3	67	471	40 <sup>2)</sup> /300	107	PDA 25 5060	SDD 4	1944	SDZ 4	1945
<b>F400 3 Phase motor, 400 V, 50 Hz, protection to IP 55</b>															
B AMD 560/4 1,1 kW F400	3222	1440	11900	1,1	400	2,4	0	498	40 <sup>2)</sup> /400	59	–	SDD 1F	1942	SDZ 1F	1943
B AMD 560/4 1,5 kW F400	3223	1440	14700	1,5	400	3,26	0	498	40 <sup>2)</sup> /400	68	–	SDD 1F	1942	SDZ 1F	1943
B AMD 560/4 2,2 kW F400	3224	1420	17700	2,2	400	4,64	0	498	40 <sup>2)</sup> /400	70	–	SDD 1F	1942	SDZ 1F	1943
B AMD 560/4 3 kW F400	3225	1420	19400	3	400	6,17	13	470	40 <sup>2)</sup> /400	73	–	SDD 4	1944	SDZ 4	1945
B AMD 560/2 7,5 kW F400	3220	2910	22600	7,5	400 <sup>5)</sup>	14,1	67	498	40 <sup>2)</sup> /400	100	–	SDD 4	1944	SDZ 4	1945
<b>F400 2 speed motor, pole-switching (Dahlander winding Y/YY), 400 V / 3 ph./ 50 Hz, protection to IP 55</b>												Pole switch surface mounted			
B AMD 560/8/4 0,4/1,6 kW F400	3227	700/1420	7300/14700	0,4/1,6	400	1,69/3,8	0	471	40 <sup>2)</sup> /400	67	PDA 12 <sup>3)</sup> 5081	SDD 1F	1942	SDZ 1F	1943
B AMD 560/8/4 0,55/2,2 kW F400	3228	700/1430	8700/17700	0,55/2,2	400	2,0/4,84	13	471	40 <sup>2)</sup> /400	70	PDA 12 <sup>3)</sup> 5081	SDD 1F	1942	SDZ 1F	1943
B AMD 560/8/4 0,7/2,8 kW F400	3229	690/1410	9400/19200	0,7/2,8	400	2,41/6,01	13	471	40 <sup>2)</sup> /400	73	PDA 12 <sup>3)</sup> 5081	SDD 4	1944	SDZ 4	1945
B AMD 560/4/2 2/8 kW F400	3226	1470/2930	11700/23200	2,0/8,0	400	4,83/15,3	67	471	40 <sup>2)</sup> /400	107	PDA 25 5060	SDD 4	1944	SDZ 4	1945

Pitch angle is mandatory when ordering. <sup>1)</sup> During ventilation / smoke extraction (nonrecurring 120 minutes). <sup>2)</sup> Higher air flow temperatures during continuous operation (ventilation mode) on request. <sup>3)</sup> Flush mounted version see product page switches. <sup>4)</sup> With Z-/P-design due to higher total weight, type assignment according to tables on page 150. <sup>5)</sup> Y/Δ starting. <sup>6)</sup> Requires fan in special execution with PTC-resistors connected to the terminal box located on the outside of the casing (additional price).



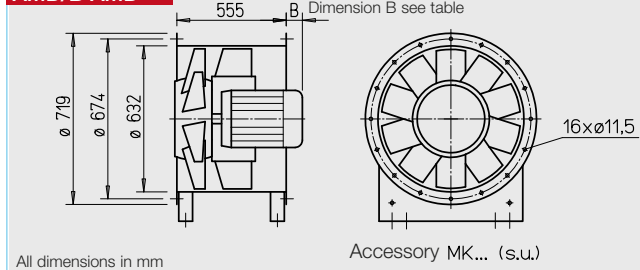


(Fig. incl. mounting feet (MK, accessories))

**Certification**

The smoke and heat exhaust fans B AMD were tested to DIN EN 12101-3., the DIBt approvals are applied. CE certificate of conformity 1511 CPD 504 (F300), 1511 CPD 505 (F400).

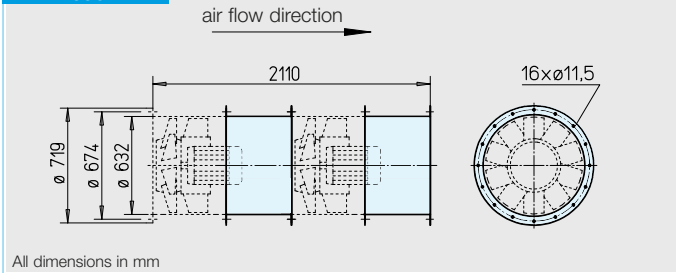
**AMD/B AMD**



All dimensions in mm

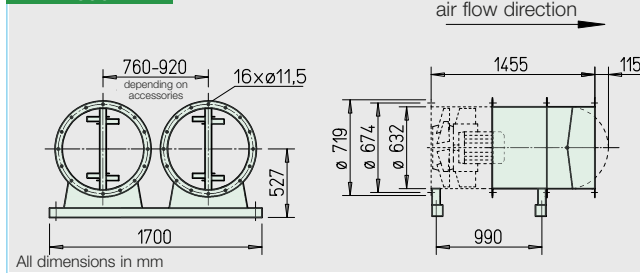
Accessory MK... (s.u.)

**MP-Z 630**



All dimensions in mm

**MP-P 630**



All dimensions in mm

**Application, casing, air flow direction, etc.**  
see page 46.

**Impeller**

- Hub and blades in corrosion-resistant aluminium alloy. Ten aerodynamically profiled blades achieve highest efficiency and pressure rates in cooperation with the guide vane.
- Dynamically balanced to DIN ISO 1940-1, class 6.3 for low-vibration operation.
- The pitch angle of the blades is adjustable at standstill and factory set.

**Motor**

- Series AMD: Maintenance-free 3-phase a.c. standard motor, protection to IP 55, insulation class F.
- Series B AMD: Direct by IEC-three phase a.c. motor in temperature-resistant execution. Protection to IP 55. Insulation class H. Fire-resistant external cable with sheathing.

**Motor protrusion**

- With some types, the motor casing projects beyond. Protrusion dimension B mm is to be observed according to the type table.

**Motor protection**

- The types are to be protected by means of motor protection switch on site. With the B AMD types this is to be bridged in case of smoke extraction.

**Electrical connection**

- Series AMD: Standard terminal box (protection to IP 55) from polymer, mounted on the outside of the casing.
- Series B AMD: Standard terminal box (protection to IP 55, from aluminium diecasting), mounted on the outside of the casing.

**Air flow temperatures**

- Series AMD: Suitable for ventilation from -20 °C to +40 °C continuous temperature. Higher air flow temperatures for continuous operation on request.
- Series B AMD: Like series AMD, however, in addition for smoke extraction according to the temperature classification to 300 °C/120 minutes or 400 °C/120 minutes.

**Mounting package MP-Z for two-stage Z-unit**

To arrange two identical fans in a row, for highest pressure rates.

Scope of delivery: Extension ducts (2 pcs) and assembly kit. Weight: 36 kg

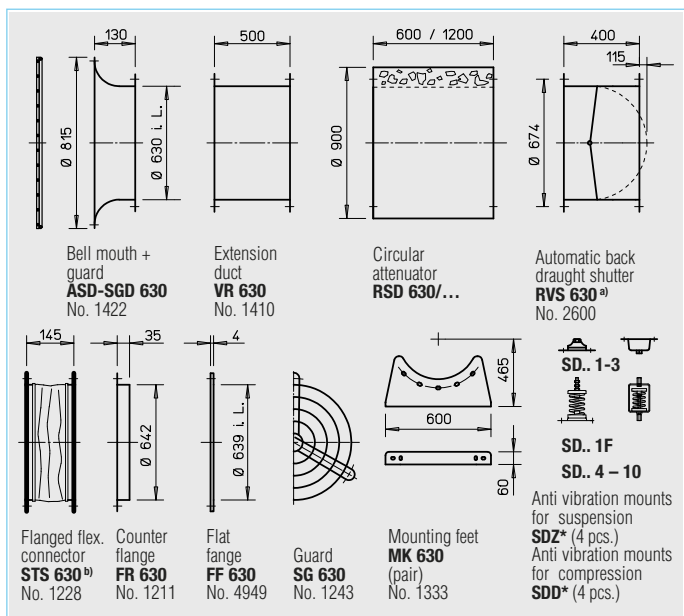
**MP-Z 630** Ref. No. 4909

**Mounting package MP-P for parallel P-unit**

To arrange two identical fans side by side, for highest air flow rates.

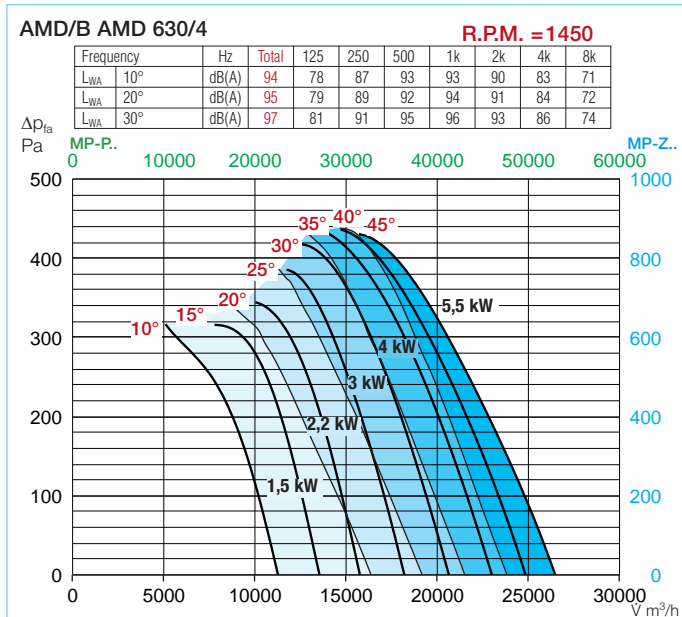
Scope of delivery: Extension ducts, back draught shutters, mounting bars (2 pcs), mounting feet (4 pcs) and assembly kits. Weight: 110 kg

**MP-P 630** Ref.-No. 4893



<sup>a)</sup> For motorised shutters, for ventilation operation, see accessory pages

<sup>b)</sup> Type for B AMD: STSB 630 F400, No. 1917 \* Type assignment see table, last column



Information	Page
Technical description	46
Design of systems	3 on

Special executions	Pages
Special execution with inspection opening (additional price) on request.	
Special execution with PTC-resistors, which are connected to the terminal box located on the outside of the casing (additional price), essential for operation in connection with frequency inverter or full motor protection switch MSA, always specify when ordering.	

Accessory details	Pages
Mounting accessories	146 on
Attenuators	151
Gas warning systems, circuitry and control technology	152 on
Frequency inverter	162 on

Type	Ref. No.	R.P.M.	Air flow volume (FID)	Motor power (nominal)	Voltage	Current at full load	Dim. B Motor protrusion	Wiring diagram	Max. air flow temp. <sup>1)</sup>	Nominal weight (net)	Full motor protection or pole switch	Anti vibration mounts <sup>4)</sup>				
												min <sup>-1</sup>	V m <sup>3</sup> /h	kW	V	A
<b>40° 3 Phase motor, 400 V, 50 Hz, protection to IP 55</b>																
AMD 630/4 1,5 kW	3291	1445	14400	1,5	400	3,39	0	470	40	74	MSA <sup>6)</sup>	1289	SDD 1	1452	SDZ 2	1455
AMD 630/4 2,2 kW	3292	1440	18500	2,2	400	4,64	0	470	40	84	MSA <sup>6)</sup>	1289	SDD 2	1453	SDZ 2	1455
AMD 630/4 3 kW	3293	1440	21400	3	400	6,18	0	470	40	90	MSA <sup>6)</sup>	1289	SDD 2	1453	SDZ 2	1455
AMD 630/4 4 kW	3294	1445	25200	4	400 <sup>5)</sup>	8,12	30	498	40	95	MSA <sup>6)</sup>	1289	SDD 2	1453	SDZ 2	1455
AMD 630/4 5,5 kW	3295	1455	27700	5,5	400 <sup>5)</sup>	10,9	40	498	40	105	MSA <sup>6)</sup>	1289	SDD 2	1453	SDZ 2	1455
<b>40° 2 speed motor, pole-switching (Dahlander winding Y/YY), 400 V / 3 ph./ 50 Hz, protection to IP 55</b>													Pole switch surface mounted			
AMD 630/8/4 0,55/2,0 kW	3297	690/1400	8100/16700	0,55/2,0	400	1,18/3,1	0	471	40	89	PDA 12 <sup>3)</sup>	5081	SDD 2	1453	SDZ 2	1455
AMD 630/8/4 0,9/3,2 kW	3298	700/1420	11000/21800	0,9/3,2	400	3,18/7,14	30	471	40	95	PDA 12 <sup>3)</sup>	5081	SDD 2	1453	SDZ 2	1455
AMD 630/8/4 1,1/4,5 kW	3299	700/1440	13300/26500	1,1/4,5	400	3,57/9,32	40	471	40	121	PDA 12 <sup>3)</sup>	5081	SDD 2	1453	SDZ 2	1455
<b>F300 3 Phase motor, 400 V, 50 Hz, protection to IP 55</b>																
B AMD 630/4 1,5 kW F300	3399	1440	14400	1,5	400	3,26	0	498	40 <sup>2)</sup> /300	81	–	–	SDD 4	1944	SDZ 4	1945
B AMD 630/4 2,2 kW F300	3400	1420	18200	2,2	400	4,64	0	498	40 <sup>2)</sup> /300	83	–	–	SDD 4	1944	SDZ 4	1945
B AMD 630/4 3 kW F300	3401	1420	22100	3	400	6,17	0	470	40 <sup>2)</sup> /300	86	–	–	SDD 4	1944	SDZ 4	1945
B AMD 630/4 4 kW F300	3402	1440	26400	4	400 <sup>5)</sup>	8,12	0	498	40 <sup>2)</sup> /300	116	–	–	SDD 4	1944	SDZ 4	1945
B AMD 630/4 5,5 kW F300	3403	1460	27700	5,5	400 <sup>5)</sup>	10,5	11	498	40 <sup>2)</sup> /300	83	–	–	SDD 4	1944	SDZ 4	1945
<b>F300 2 speed motor, pole-switching (Dahlander winding Y/YY), 400 V / 3 ph./ 50 Hz, protection to IP 55</b>													Pole switch surface mounted			
B AMD 630/8/4 0,4/1,6 kW F300	3404	700/1420	7700/15700	0,4/1,6	400	1,69/3,8	0	471	40 <sup>2)</sup> /300	80	PDA 12 <sup>3)</sup>	5081	SDD 4	1944	SDZ 4	1945
B AMD 630/8/4 0,55/2,2 kW F300	3405	700/1430	9000/18200	0,55/2,2	400	2,0/4,84	0	471	40 <sup>2)</sup> /300	86	PDA 12 <sup>3)</sup>	5081	SDD 4	1944	SDZ 4	1945
B AMD 630/8/4 0,7/2,8 kW F300	3406	690/1410	10500/21500	0,7/2,8	400	2,41/6,01	0	471	40 <sup>2)</sup> /300	86	PDA 12 <sup>3)</sup>	5081	SDD 4	1944	SDZ 4	1945
B AMD 630/8/4 1/3,8 kW F300	3407	710/1440	12300/24800	1,0/3,8	400	2,75/8,26	0	471	40 <sup>2)</sup> /300	96	PDA 12 <sup>3)</sup>	5081	SDD 4	1944	SDZ 4	1945
B AMD 630/8/4 1,3/5 kW F300	3408	730/1440	13717/27060	1,3/5,0	400	3,5/10,4	11	471	40 <sup>2)</sup> /300	121	PDA 12 <sup>3)</sup>	5081	SDD 4	1944	SDZ 4	1945
<b>F400 3 Phase motor, 400 V, 50 Hz, protection to IP 55</b>																
B AMD 630/4 1,5 kW F400	3230	1440	14400	1,5	400	3,26	0	498	40 <sup>2)</sup> /400	81	–	–	SDD 4	1944	SDZ 4	1945
B AMD 630/4 2,2 kW F400	3231	1420	18200	2,2	400	4,64	0	498	40 <sup>2)</sup> /400	83	–	–	SDD 4	1944	SDZ 4	1945
B AMD 630/4 3 kW F400	3232	1420	22100	3	400	6,17	0	498	40 <sup>2)</sup> /400	86	–	–	SDD 4	1944	SDZ 4	1945
B AMD 630/4 4 kW F400	3233	1440	26400	4	400 <sup>5)</sup>	8,12	0	498	40 <sup>2)</sup> /400	116	–	–	SDD 4	1944	SDZ 4	1945
B AMD 630/4 5,5 kW F400	3234	1460	27700	5,5	400 <sup>5)</sup>	10,5	11	498	40 <sup>2)</sup> /400	83	–	–	SDD 4	1944	SDZ 4	1945
<b>F400 2 speed motor, pole-switching (Dahlander winding Y/YY), 400 V / 3 ph./ 50 Hz, protection to IP 55</b>													Pole switch surface mounted			
B AMD 630/8/4 0,4/1,6 kW F400	3235	700/1420	7700/15700	0,4/1,6	400	1,7/3,8	0	471	40 <sup>2)</sup> /400	80	PDA 12 <sup>3)</sup>	5081	SDD 4	1944	SDZ 4	1945
B AMD 630/8/4 0,55/2,2 kW F400	3236	700/1430	9000/18200	0,55/2,2	400	2,0/4,84	0	471	40 <sup>2)</sup> /400	86	PDA 12 <sup>3)</sup>	5081	SDD 4	1944	SDZ 4	1945
B AMD 630/8/4 0,7/2,8 kW F400	3237	690/1410	10500/21500	0,7/2,8	400	2,41/6,01	0	471	40 <sup>2)</sup> /400	86	PDA 12 <sup>3)</sup>	5081	SDD 4	1944	SDZ 4	1945
B AMD 630/8/4 1/3,8 kW F400	3238	710/1440	12220/24780	1,0/3,8	400	2,75/8,26	0	471	40 <sup>2)</sup> /400	96	PDA 12 <sup>3)</sup>	5081	SDD 4	1944	SDZ 4	1945
B AMD 630/8/4 1,3/5 kW F400	3239	730/1440	13800/27100	1,3/5,0	400	3,5/10,4	11	471	40 <sup>2)</sup> /400	121	PDA 12 <sup>3)</sup>	5081	SDD 4	1944	SDZ 4	1945

Pitch angle is mandatory when ordering. <sup>1)</sup> During ventilation / smoke extraction (nonrecurring 120 minutes). <sup>2)</sup> Higher air flow temperatures during continuous operation (ventilation mode) on request. <sup>3)</sup> Flush mounted version see product page switches. <sup>4)</sup> With Z-/P-design due to higher total weight, type assignment according to tables on page 150. <sup>5)</sup> Y/Δ starting. <sup>6)</sup> Requires fan in special execution with PTC-resistors connected to the terminal box located on the outside of the casing (additional price).

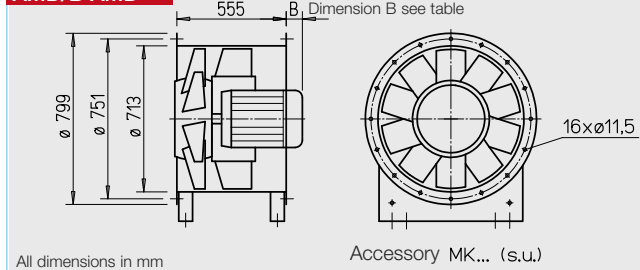


(Fig. incl. mounting feet (MK, accessories))

**■ Certification**

The smoke and heat exhaust fans B AMD were tested to DIN EN 12101-3., the DIBt approvals are applied. CE certificate of conformity 1511 CPD 504 (F300), 1511 CPD 505 (F400).

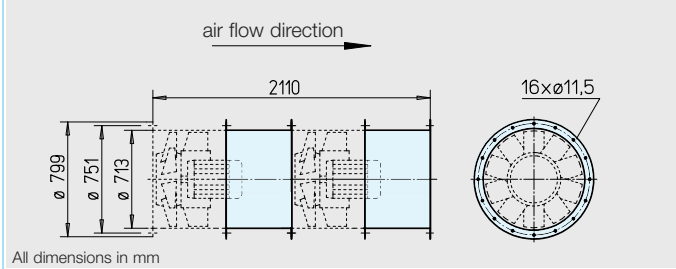
**AMD/B AMD**



All dimensions in mm

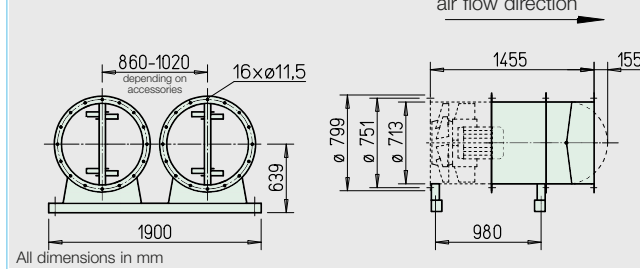
Accessory MK... (s.u.)

**MP-Z 710**



All dimensions in mm

**MP-P 710**



All dimensions in mm

**■ Application, casing, air flow direction, etc.**  
see page 46.

**■ Impeller**

- Hub and blades in corrosion-resistant aluminium alloy. Ten aerodynamically profiled blades achieve highest efficiency and pressure rates in cooperation with the guide vane.
- Dynamically balanced to DIN ISO 1940-1, class 6.3 for low-vibration operation.
- The pitch angle of the blades is adjustable at standstill and factory set.

**■ Motor**

- Series AMD: Maintenance-free 3-phase a.c. standard motor, protection to IP 55, insulation class F.
- Series B AMD: Direct by IEC-three phase a.c. motor in temperature-resistant execution. Protection to IP 55. Insulation class H. Fire-resistant external cable with sheathing..

**■ Motor protrusion**

- With some types, the motor casing projects beyond. Protrusion dimension B mm is to be observed according to the type table.

**■ Motor protection**

- The types are to be protected by means of motor protection switch on site. With the B AMD types this is to be bridged in case of smoke extraction.

**■ Electrical connection**

- Series AMD: Standard terminal box (protection to IP 55) from polymer, mounted on the outside of the casing.
- Series B AMD: Standard terminal box (protection to IP 55, from aluminium diecasting), mounted on the outside of the casing.

**■ Air flow temperatures**

- Series AMD: Suitable for ventilation from -20 °C to +40 °C continuous temperature. Higher air flow temperatures for continuous operation on request.
- Series B AMD: Like series AMD, however, in addition for smoke extraction according to the temperature classification to 300 °C/120 minutes or 400 °C/120 minutes.

**■ Mounting package MP-Z for two-stage Z-unit**

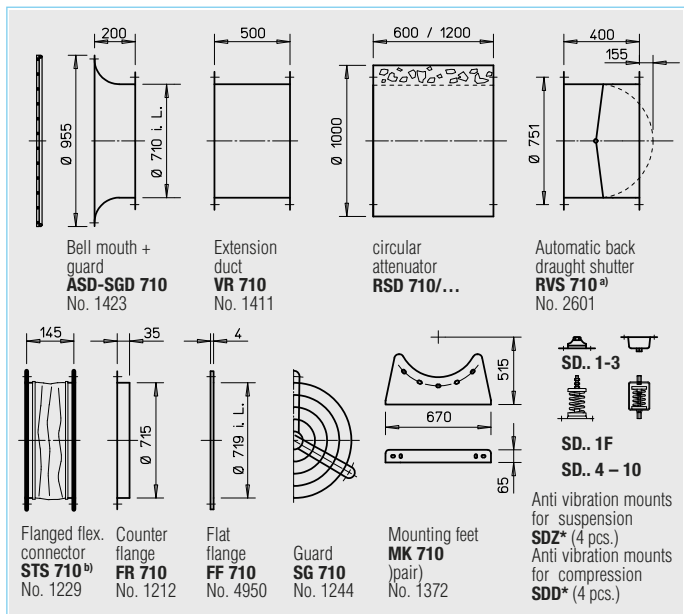
To arrange two identical fans in a row, for highest pressure rates. Scope of delivery: Extension ducts (2 pcs) and assembly kit. Weight: 43 kg

**MP-Z 710** Ref. No. 4910

**■ Mounting package MP-P for parallel P-unit**

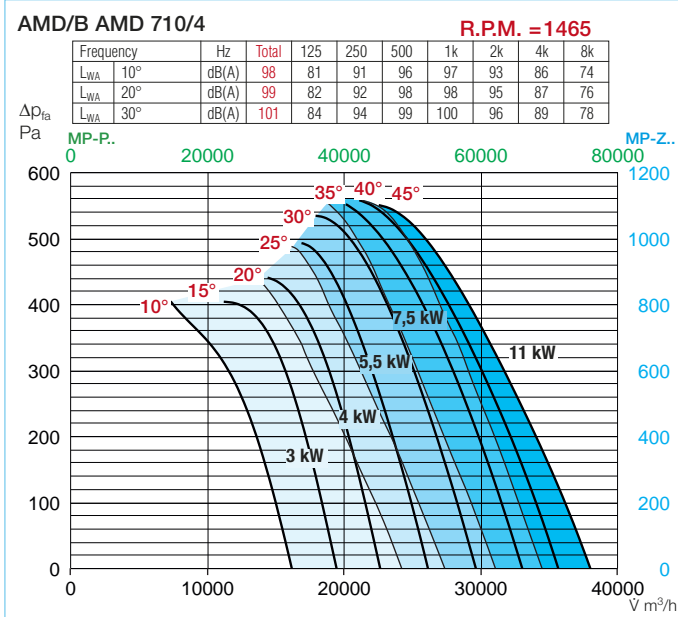
To arrange two identical fans side by side, for highest air flow rates. Scope of delivery: Extension ducts, back draught shutters, mounting bars (2 pcs) and assembly kits. Weight: 145 kg

**MP-P 710** Ref. No. 4894



a) For motorised shutters, for ventilation operation, see accessory pages

b) Type for B AMD: STSB 710 F400, No. 1918 \* Type assignment see table, last column



Information	Page
Technical description	46
Design of systems	3 on

Special executions	Pages
Special execution with inspection opening (additional price) on request.	
Special execution with PTC-resistors, which are connected to the terminal box located on the outside of the casing (additional price), essential for operation in connection with frequency inverter or full motor protection switch MSA, always specify when ordering.	

Accessory details	Pages
Mounting accessories	146 on
Attenuators	151
Gas warning systems, circuitry and control technology	152 on
Frequency inverter	162 on

Type	Ref. No.	R.P.M.	Air flow volume (FID)	Motor power (nominal)	Voltage	Current at full load	Dim. B Motor protrusion	Wiring diagram	Max. air flow temp. <sup>1)</sup>	Nominal weight (net)	Full motor protection or pole switch		Anti vibration mounts <sup>4)</sup>			
											Type	Ref. No.	Compression	Ref. No.	Suspension	Ref. No.
<b>40°</b> 3 Phase motor, 400 V, 50 Hz, protection to IP 55																
AMD 710/4 3 kW	3301	1440	23000	3	400	6,18	10	470	40	117	MSA <sup>6)</sup>	1289	SDD 2	1453	SDZ 2	1455
AMD 710/4 4 kW	3302	1445	26600	4	400 <sup>5)</sup>	8,12	60	498	40	122	MSA <sup>6)</sup>	1289	SDD 2	1453	SDZ 2	1455
AMD 710/4 5,5 kW	3303	1455	31000	5,5	400 <sup>5)</sup>	10,9	70	498	40	132	MSA <sup>6)</sup>	1289	SDD 2	1453	SDZ 2	1455
AMD 710/4 7,5 kW	3304	1455	36200	7,5	400 <sup>5)</sup>	14,5	110	498	40	144	MSA <sup>6)</sup>	1289	SDD 2	1453	SDZ 2	1455
AMD 710/4 11 kW	3305	1460	39900	11	400 <sup>5)</sup>	21	175	498	40	218	MSA <sup>6)</sup>	1289	SDD 3	1367	SDZ 3	1366
<b>40°</b> 2 speed motor, pole-switching (Dahlander winding Y/YY), 400 V / 3 ph./ 50 Hz, protection to IP 55													Pole switch surface mounted			
AMD 710/8/4 0,9/3,2 kW	3306	700/1420	11100/23000	0,9/3,2	400	3,18/7,14	60	471	40	122	PDA 12 <sup>3)</sup>	5081	SDD 2	1453	SDZ 2	1455
AMD 710/8/4 1,1/4,5 kW	3307	700/1440	13200/27500	1,1/4,5	400	3,57/9,32	70	471	40	148	PDA 12 <sup>3)</sup>	5081	SDD 2	1453	SDZ 2	1455
AMD 710/8/4 1,5/6,3 kW	3308	700/1440	16700/34500	1,5/6,3	400	4,6/12,6	110	471	40	159	PDA 25	5060	SDD 2	1453	SDZ 2	1455
AMD 710/8/4 2,0/8,9 kW	3309	700/1440	18700/38900	2,0/8,9	400	5,25/17,8	175	471	40	228	PDA 25	5060	SDD 3	1367	SDZ 3	1366
<b>F300</b> 3 Phase motor, 400 V, 50 Hz, protection to IP 55																
B AMD 710/4 3 kW F300	3420	1420	22300	3	400	6,17	0	498	40 <sup>2)</sup> /300	113	–	–	SDD 4	1944	SDZ 4	1945
B AMD 710/4 4 kW F300	3421	1440	26600	4	400 <sup>5)</sup>	8,12	5	498	40 <sup>2)</sup> /300	122	–	–	SDD 4	1944	SDZ 4	1945
B AMD 710/4 5,5 kW F300	3422	1460	31400	5,5	400 <sup>5)</sup>	10,5	41	498	40 <sup>2)</sup> /300	143	–	–	SDD 5	1924	SDZ 5	1925
B AMD 710/4 7,5 kW F300	3423	1450	36300	7,5	400 <sup>5)</sup>	14,1	80	498	40 <sup>2)</sup> /300	152	–	–	SDD 5	1924	SDZ 5	1925
B AMD 710/4 11 kW F300	3424	1470	40800	11	400 <sup>5)</sup>	21,2	158	498	40 <sup>2)</sup> /300	185	–	–	SDD 5	1924	SDZ 5	1925
<b>F300</b> 2 speed motor, pole-switching (Dahlander winding Y/YY), 400 V / 3 ph./ 50 Hz, protection to IP 55													Pole switch surface mounted			
B AMD 710/8/4 0,7/2,8 kW F300	3507	690/1410	10700/21700	0,7/2,8	400	2,41/6,01	0	471	40 <sup>2)</sup> /300	113	PDA 12 <sup>3)</sup>	5081	SDD 4	1944	SDZ 4	1945
B AMD 710/8/4 1/3,8 kW F300	3508	710/1440	12300/24900	1,0/3,8	400	2,75/8,26	5	471	40 <sup>2)</sup> /300	123	PDA 12 <sup>3)</sup>	5081	SDD 4	1944	SDZ 4	1945
B AMD 710/8/4 1,3/5 kW F300	3509	730/1440	15300/30000	1,3/5,0	400	3,5/10,4	41	471	40 <sup>2)</sup> /300	148	PDA 12 <sup>3)</sup>	5081	SDD 5	1924	SDZ 5	1925
B AMD 710/8/4 1,8/7,2 kW F300	3510	720/1430	18300/36000	1,8/7,2	400	4,64/14,4	78	471	40 <sup>2)</sup> /300	160	PDA 25	5060	SDD 5	1924	SDZ 5	1925
B AMD 710/8/4 3/11 kW F300	3511	720/1450	19800/39600	3,0/11,0	400	7,0/21,0	158	471	40 <sup>2)</sup> /300	199	PDA 25	5060	SDD 5	1924	SDZ 5	1925
<b>F400</b> 3 Phase motor, 400 V, 50 Hz, protection to IP 55																
B AMD 710/4 3 kW F400	3240	1420	22300	3	400	6,17	0	498	40 <sup>2)</sup> /400	113	–	–	SDD 4	1944	SDZ 4	1945
B AMD 710/4 4 kW F400	3241	1440	26600	4	400 <sup>5)</sup>	8,12	5	498	40 <sup>2)</sup> /400	122	–	–	SDD 4	1944	SDZ 4	1945
B AMD 710/4 5,5 kW F400	3243	1460	31400	5,5	400 <sup>5)</sup>	10,5	41	498	40 <sup>2)</sup> /400	143	–	–	SDD 5	1924	SDZ 5	1925
B AMD 710/4 7,5 kW F400	3244	1450	36300	7,5	400 <sup>5)</sup>	14,1	41	498	40 <sup>2)</sup> /400	152	–	–	SDD 5	1924	SDZ 5	1925
B AMD 710/4 11 kW F400	3245	1470	40800	11	400 <sup>5)</sup>	21,2	158	498	40 <sup>2)</sup> /400	185	–	–	SDD 5	1924	SDZ 5	1925
<b>F400</b> 2 speed motor, pole-switching (Dahlander winding Y/YY), 400 V / 3 ph./ 50 Hz, protection to IP 55													Pole switch surface mounted			
B AMD 710/8/4 0,7/2,8 kW F400	3246	690/1410	10700/21700	0,7/2,8	400	2,41/6,01	0	471	40 <sup>2)</sup> /400	113	PDA 12 <sup>3)</sup>	5081	SDD 4	1944	SDZ 4	1945
B AMD 710/8/4 1/3,8 kW F400	3247	710/1440	12300/24900	1,0/3,8	400	2,75/8,26	5	471	40 <sup>2)</sup> /400	123	PDA 12 <sup>3)</sup>	5081	SDD 4	1944	SDZ 4	1945
B AMD 710/8/4 1,3/5 kW F400	3248	730/1440	15300/30000	1,3/5,0	400	3,5/10,4	41	471	40 <sup>2)</sup> /400	148	PDA 12 <sup>3)</sup>	5081	SDD 5	1924	SDZ 5	1925
B AMD 710/8/4 1,8/7,2 kW F400	3249	720/1430	18300/36000	1,8/7,2	400	4,64/14,4	78	471	40 <sup>2)</sup> /400	160	PDA 25	5060	SDD 5	1924	SDZ 5	1925
B AMD 710/8/4 3/11 kW F400	3250	720/1450	19700/39540	3,0/11,0	400	7,0/21,0	158	471	40 <sup>2)</sup> /400	199	PDA 25	5060	SDD 5	1924	SDZ 5	1925

Pitch angle is mandatory when ordering. <sup>1)</sup> During ventilation / smoke extraction (nonrecurring 120 minutes). <sup>2)</sup> Higher air flow temperatures during continuous operation (ventilation mode) on request. <sup>3)</sup> Flush mounted version see product page switches. <sup>4)</sup> With Z-/P-design due to higher total weight, type assignment according to tables on page 150. <sup>5)</sup> Y/Δ starting. <sup>6)</sup> Requires fan in special execution with PTC-resistors connected to the terminal box located on the outside of the casing (additional price).

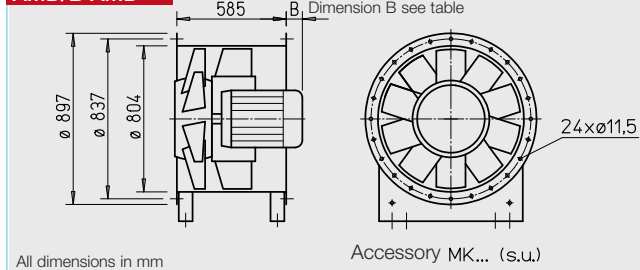


(Fig. incl. mounting feet (MK, accessories))

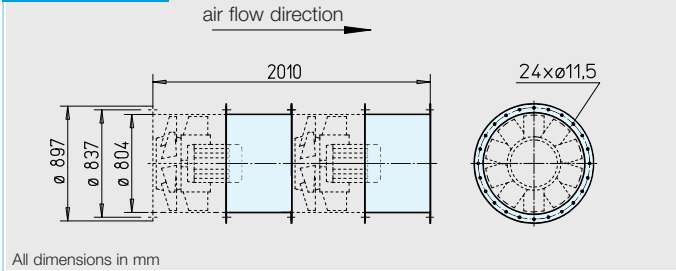
**■ Certification**

The smoke and heat exhaust fans B AMD were tested to DIN EN 12101-3., the DIBt approvals are applied. CE certificate of conformity 1511 CPD 504 (F300), 1511 CPD 505 (F400).

**AMD/B AMD**



**MP-Z 800**



**■ Application, casing, air flow direction, etc.**  
see page 46.

**■ Impeller**

- Hub and blades in corrosion-resistant aluminium alloy. Ten aerodynamically profiled blades achieve highest efficiency and pressure rates in cooperation with the guide vane.
- Dynamically balanced to DIN ISO 1940-1, class 6.3 for low-vibration operation.
- The pitch angle of the blades is adjustable at standstill and factory set.

**■ Motor**

- Series AMD: Maintenance-free 3-phase a.c. standard motor, protection to IP 55, insulation class F.
- Series B AMD: Direct by IEC-three phase a.c. motor in temperature-resistant execution. Protection to IP 55. Insulation class H. Fire-resistant external cable with sheathing.

**■ Motor protrusion**

- With some types, the motor casing projects beyond. Protrusion dimension B mm is to be observed according to the type table.

**■ Motor protection**

- The types are to be protected by means of motor protection switch on site. With the B AMD types this is to be bridged in case of smoke extraction.

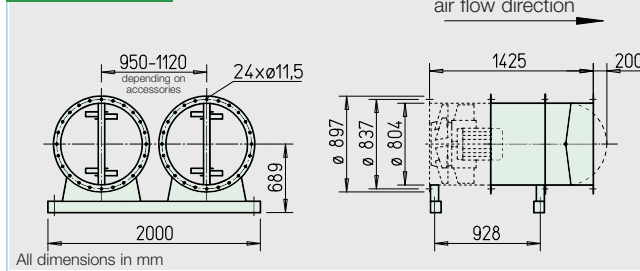
**■ Electrical connection**

- Series AMD: Standard terminal box (protection to IP 55) from polymer, mounted on the outside of the casing.
- Series B AMD: Standard terminal box (protection to IP 55, from aluminium diecasting), mounted on the outside of the casing.

**■ Air flow temperatures**

- Series AMD: Suitable for ventilation from -20 °C to +40 °C continuous temperature. Higher air flow temperatures for continuous operation on request.
- Series B AMD: Like series AMD, however, in addition for smoke extraction according to the temperature classification to 300 °C/120 minutes or 400 °C/120 minutes.

**MP-P 800**



**■ Mounting package MP-Z for two-stage Z-unit**

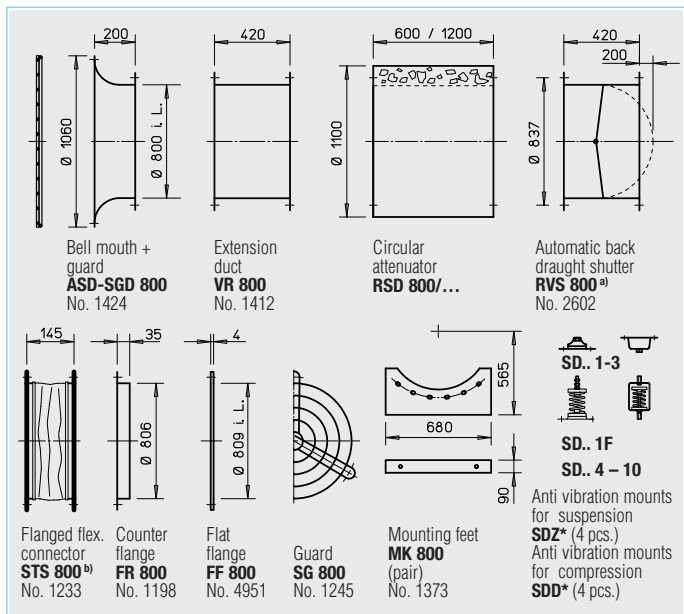
To arrange two identical fans in a row, for highest pressure rates. Scope of delivery: Extension ducts (2 pcs) and assembly kit. Weight: 60 kg

**MP-Z 800** Ref. No. 4911

**■ Mounting package MP-P for parallel P-unit**

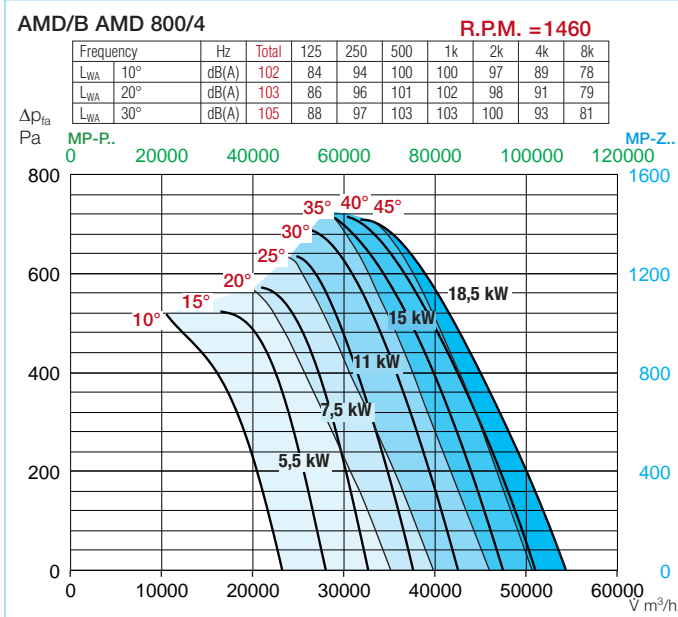
To arrange two identical fans side by side, for highest air flow rates. Scope of delivery: Extension ducts, back draught shutters, mounting bars (2 pcs), mounting feet (4 pcs) and assembly kits. Weight: 205 kg

**MP-P 800** Ref. No. 4895



<sup>a)</sup> For motorised shutters, for ventilation operation, see accessory pages

<sup>b)</sup> Type for B AMD: STSB 800 F400, No. 1919 \* Type assignment see table, last column



Information	Page
Technical description	46
Design of systems	3 on

Special executions	Pages
Special execution with inspection opening (additional price) on request.	
Special execution with PTC-resistors, which are connected to the terminal box located on the outside of the casing (additional price), essential for operation in connection with frequency inverter or full motor protection switch MSA, always specify when ordering.	

Accessory details	Pages
Mounting accessories	146 on
Attenuators	151
Gas warning systems, circuitry and control technology	152 on
Frequency inverter	162 on

Type	Ref. No.	R.P.M.	Air flow volume (FID)	Motor power (nominal)	Voltage	Current at full load	Dim. B Motor protrusion	Wiring diagram	Max. air flow temp. <sup>1)</sup>	Nominal weight (net)	Full motor protection or pole switch	Anti vibration mounts <sup>4)</sup>			
												Compression		Suspension	
												Type	Ref. No.	Type	Ref. No.
<b>40° 3 Phase motor, 400 V, 50 Hz, protection to IP 55</b>															
AMD 800/4 5,5 kW	3311	1455	33000	5,5	400 <sup>5)</sup>	10,9	65	498	40	168	MSA <sup>6)</sup> 1289	SDD 2	1453	SDZ 3	1366
AMD 800/4 7,5 kW	3312	1455	38400	7,5	400 <sup>5)</sup>	14,5	100	498	40	180	MSA <sup>6)</sup> 1289	SDD 2	1453	SDZ 3	1366
AMD 800/4 11 kW	3313	1460	47200	11	400 <sup>5)</sup>	21,0	165	498	40	254	MSA <sup>6)</sup> 1289	SDD 3	1367	SDZ 3	1366
AMD 800/4 15 kW	3314	1460	55100	15	400 <sup>5)</sup>	28,1	210	498	40	264	MSA <sup>6)</sup> 1289	SDD 3	1367	SDZ 3	1366
AMD 800/4 18,5 kW	3315	1470	57900	18,5	400 <sup>5)</sup>	34,0	250	498	40	301	MSA <sup>6)</sup> 1289	SDD 3	1367	SDZ 6	1927
<b>40° 2 speed motor, pole-switching (Dahlander winding Y/YY), 400 V / 3 ph./ 50 Hz, protection to IP 55</b>															
												Pole switch surface mounted			
AMD 800/8/4 1,5/6,3 kW	3316	700/1440	16500/33700	1,5/6,3	400	4,6/12,6	100	471	40	195	PDA 25 5060	SDD 3	1367	SDZ 3	1366
AMD 800/8/4 2,0/8,9 kW	3317	700/1440	21100/43600	2,0/8,9	400	5,25/17,8	165	471	40	264	PDA 25 5060	SDD 3	1367	SDZ 3	1366
AMD 800/8/4 2,7/12 kW	3318	710/1460	23800/49400	2,7/12	400	6,92/23,4	210	471	40	276	PDA 25 5060	SDD 3	1367	SDZ 3	1366
AMD 800/8/4 4,0/16 kW	3319	720/1460	27000/55600	4,0/16,0	400	10,6/30,9	250	471	40	301	PDA 63 1283	SDD 3	1367	SDZ 6	1927
<b>F300 3 Phase motor, 400 V, 50 Hz, protection to IP 55</b>															
B AMD 800/4 5,5 kW F300	3514	1460	32900	5,5	400 <sup>5)</sup>	10,5	34	498	40 <sup>2)</sup> /300	179	–	SDD 5	1924	SDZ 5	1925
B AMD 800/4 7,5 kW F300	3515	1450	38600	7,5	400 <sup>5)</sup>	14,1	73	498	40 <sup>2)</sup> /300	188	–	SDD 5	1924	SDZ 5	1925
B AMD 800/4 11 kW F300	3516	1470	46000	11	400 <sup>5)</sup>	21,2	151	498	40 <sup>2)</sup> /300	221	–	SDD 6	1926	SDZ 6	1927
B AMD 800/4 15 kW F300	3517	1460	54800	15	400 <sup>5)</sup>	28,7	196	498	40 <sup>2)</sup> /300	241	–	SDD 6	1926	SDZ 6	1927
B AMD 800/4 18,5 kW F300	3518	1460	58500	18,5	400 <sup>5)</sup>	35,1	217	498	40 <sup>2)</sup> /300	280	–	SDD 6	1926	SDZ 6	1927
<b>F300 2 speed motor, pole-switching (Dahlander winding Y/YY), 400 V / 3 ph./ 50 Hz, protection to IP 55</b>															
												Pole switch surface mounted			
B AMD 800/8/4 1,3/5 kW F300	3519	730/1440	16700/32900	1,3/5,0	400	3,5/10,4	34	471	40 <sup>2)</sup> /300	184	PDA 12 <sup>3)</sup> 5081	SDD 5	1924	SDZ 5	1925
B AMD 800/8/4 1,8/7,2 kW F300	3520	730/1430	19600/38600	1,8/7,2	400	4,64/14,4	73	471	40 <sup>2)</sup> /300	196	PDA 25 5060	SDD 5	1924	SDZ 5	1925
B AMD 800/8/4 3/11 kW F300	3521	730/1450	23000/46000	3,0/11,0	400	7,0/21,0	196	471	40 <sup>2)</sup> /300	235	PDA 25 5060	SDD 6	1926	SDZ 6	1927
B AMD 800/8/4 4,3/17 kW F300	3522	730/1470	28400/57400	4,3/17,0	400	12,7/33,4	217	471	40 <sup>2)</sup> /300	278	PDA 63 1283	SDD 6	1926	SDZ 6	1927
<b>F400 3 Phase motor, 400 V, 50 Hz, protection to IP 55</b>															
B AMD 800/4 5,5 kW F400	3255	1460	32900	5,5	400 <sup>5)</sup>	10,5	34	498	40 <sup>2)</sup> /400	179	–	SDD 5	1924	SDZ 5	1925
B AMD 800/4 7,5 kW F400	3256	1450	38600	7,5	400 <sup>5)</sup>	14,1	73	498	40 <sup>2)</sup> /400	188	–	SDD 5	1924	SDZ 5	1925
B AMD 800/4 11 kW F400	3257	1470	46000	11	400 <sup>5)</sup>	21,2	151	498	40 <sup>2)</sup> /400	221	–	SDD 6	1926	SDZ 6	1927
B AMD 800/4 15 kW F400	3258	1460	54800	15	400 <sup>5)</sup>	28,7	196	498	40 <sup>2)</sup> /400	241	–	SDD 6	1926	SDZ 6	1927
B AMD 800/4 18,5 kW F400	3259	1460	58500	18,5	400 <sup>5)</sup>	35,1	217	498	40 <sup>2)</sup> /400	280	–	SDD 6	1926	SDZ 6	1927
<b>F400 2 speed motor, pole-switching (Dahlander winding Y/YY), 400 V / 3 ph./ 50 Hz, protection to IP 55</b>															
												Pole switch surface mounted			
B AMD 800/8/4 1,3/5 kW F400	3260	730/1440	16700/32900	1,3/5,0	400	3,5/10,4	34	471	40 <sup>2)</sup> /400	184	PDA 12 <sup>3)</sup> 5081	SDD 5	1924	SDZ 5	1925
B AMD 800/8/4 1,8/7,2 kW F400	3261	720/1430	19600/38600	1,8/7,2	400	4,64/14,4	73	471	40 <sup>2)</sup> /400	196	PDA 25 5060	SDD 5	1924	SDZ 5	1925
B AMD 800/8/4 3/11 kW F400	3262	720/1450	23000/46000	3,0/11,0	400	7,0/21,0	196	471	40 <sup>2)</sup> /400	235	PDA 25 5060	SDD 6	1926	SDZ 6	1927
B AMD 800/8/4 4,3/17 kW F400	3263	730/1470	28400/57400	4,3/17,0	400	12,7/33,4	217	471	40 <sup>2)</sup> /400	278	PDA 63 1283	SDD 6	1926	SDZ 6	1927

Pitch angle is mandatory when ordering. <sup>1)</sup> During ventilation / smoke extraction (nonrecurring 120 minutes). <sup>2)</sup> Higher air flow temperatures during continuous operation (ventilation mode) on request. <sup>3)</sup> Flush mounted version see product page switches. <sup>4)</sup> With Z-/P-design due to higher total weight, type assignment according to tables on page 150. <sup>5)</sup> Y/Δ starting. <sup>6)</sup> Requires fan in special execution with PTC-resistors connected to the terminal box located on the outside of the casing (additional price).

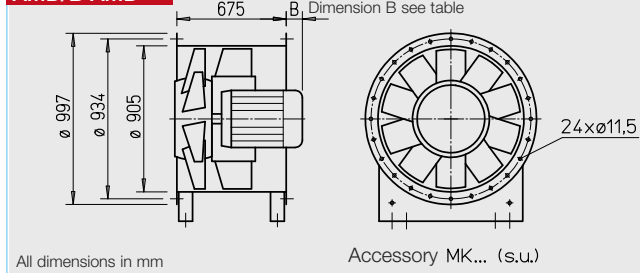


(Fig. incl. mounting feet (MK, accessories))

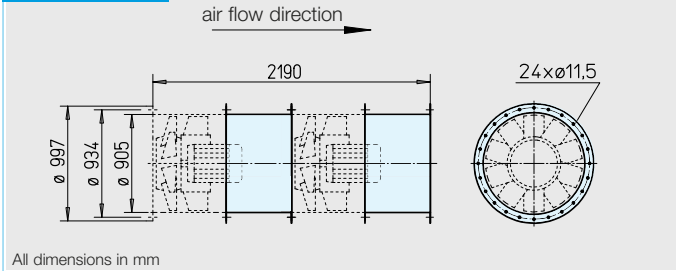
**■ Certification**

The smoke and heat exhaust fans B AMD were tested to DIN EN 12101-3., the DIBt approvals are applied. CE certificate of conformity 1511 CPD 504 (F300), 1511 CPD 505 (F400).

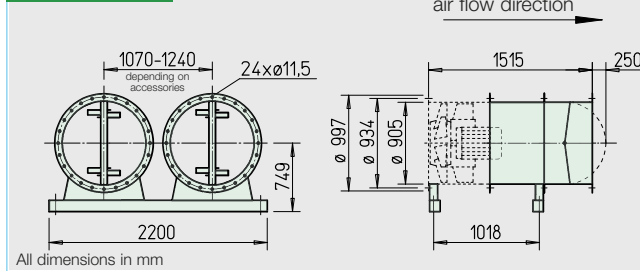
**AMD/B AMD**



**MP-Z 900**



**MP-P 900**



**■ Application, casing, air flow direction, etc.**  
see page 46.

**■ Impeller**

- Hub and blades in corrosion-resistant aluminium alloy. Ten aerodynamically profiled blades achieve highest efficiency and pressure rates in cooperation with the guide vane.
- Dynamically balanced to DIN ISO 1940-1, class 6.3 for low-vibration operation.
- The pitch angle of the blades is adjustable at standstill and factory set.

**■ Motor**

- Series AMD: Maintenance-free 3-phase a.c. standard motor, protection to IP 55, insulation class F.
- Series B AMD: Direct by IEC-three phase a.c. motor in temperature-resistant execution. Protection to IP 55. Insulation class H. Fire-resistant external cable with sheathing.

**■ Motor protrusion**

- With some types, the motor casing projects beyond. Protrusion dimension B mm is to be observed according to the type table.

**■ Motor protection**

- The types are to be protected by means of motor protection switch on site. With the B AMD types this is to be bridged in case of smoke extraction.

**■ Electrical connection**

- Series AMD: Standard terminal box (protection to IP 55) from polymer, mounted on the outside of the casing.
- Series B AMD: Standard terminal box (protection to IP 55, from aluminium diecasting), mounted on the outside of the casing.

**■ Air flow temperatures**

- Series AMD: Suitable for ventilation from -20 °C to +40 °C continuous temperature. Higher air flow temperatures for continuous operation on request.
- Series B AMD: Like series AMD, however, in addition for smoke extraction according to the temperature classification to 300 °C/120 minutes or 400 °C/120 minutes.

**■ Mounting package MP-Z for two-stage Z-unit**

To arrange two identical fans in a row, for highest pressure rates.

Scope of delivery: Extension ducts (2 pcs) and assembly kit. Weight: 68 kg

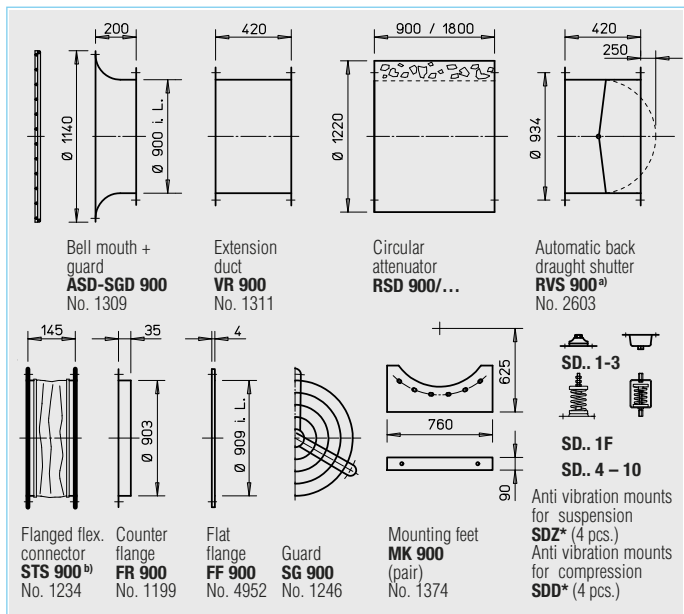
**MP-Z 900** Ref. No. 4912

**■ Mounting package MP-P for parallel P-unit**

To arrange two identical fans side by side, for highest air flow rates.

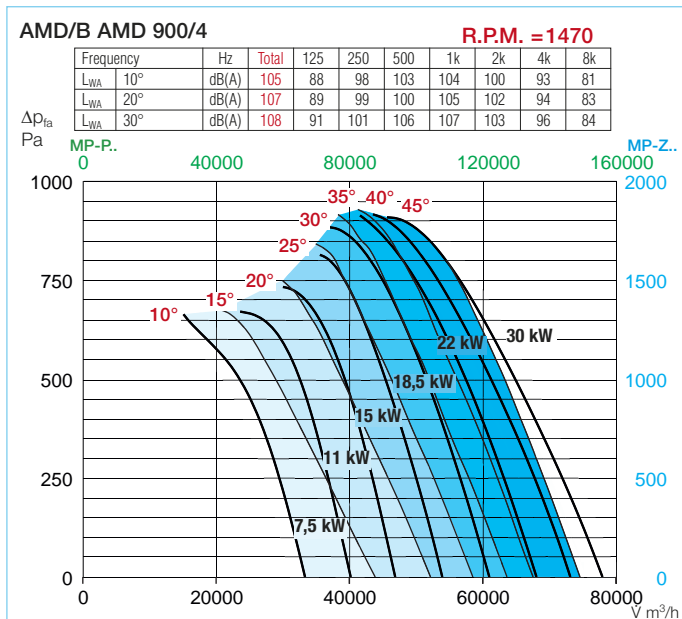
Scope of delivery: Extension ducts, back draught shutters, mounting bars (2 pcs), mounting feet (4 pcs) and assembly kits. Weight: 235 kg

**MP-P 900** Ref. No. 4896



<sup>a)</sup> For motorised shutters, for ventilation operation, see accessory pages

<sup>b)</sup> Type for B AMD: STSB 900 F400, No. 1920 \* Type assignment see table, last column



Information	Page
Technical description	46
Design of systems	3 on

Special executions	Pages
Special execution with inspection opening (additional price) on request.	
Special execution with PTC-resistors, which are connected to the terminal box located on the outside of the casing (additional price), essential for operation in connection with frequency inverter or full motor protection switch MSA, always specify when ordering.	

Accessory details	Pages
Mounting accessories	146 on
Attenuators	151
Gas warning systems, circuitry and control technology	152 on
Frequency inverter	162 on

Type	Ref. No.	R.P.M.	Air flow volume (FID)	Motor power (nominal)	Voltage	Current at full load	Dim. B Motor protrusion	Wiring diagram	Max. air flow temp. <sup>1)</sup>	Nominal weight (net)	Full motor protection or pole switch	Anti vibration mounts <sup>4)</sup>			
												Compression		Suspension	
		min <sup>-1</sup>	V m <sup>3</sup> /h	kW	V	A	mm	No.	+°C	ca. kg	Type Ref. No.	Type Ref. No.	Type Ref. No.	Type Ref. No.	
<b>40° 3 Phase motor, 400 V, 50 Hz, protection to IP 55</b>															
AMD 900/4 7,5 kW	3322	1445	38600	7,5	400 <sup>5)</sup>	14,5	50	776	40	211	MSA <sup>6)</sup> 1289	SDD 3 1367	SDZ 3 1366		
AMD 900/4 11 kW	3323	1460	48900	11	400 <sup>5)</sup>	21,0	50	776	40	285	MSA <sup>6)</sup> 1289	SDD 3 1367	SDZ 3 1366		
AMD 900/4 15 kW	3324	1460	56500	15	400 <sup>5)</sup>	28,1	110	776	40	295	MSA <sup>6)</sup> 1289	SDD 3 1367	SDZ 3 1366		
AMD 900/4 18,5 kW	3325	1470	64600	18,5	400 <sup>5)</sup>	34,0	190	776	40	332	MSA <sup>6)</sup> 1289	SDD 3 1367	SDZ 6 1927		
AMD 900/4 22 kW	3326	1470	70400	22	400 <sup>5)</sup>	40,2	230	776	40	347	MSA <sup>6)</sup> 1289	SDD 3 1367	SDZ 6 1927		
AMD 900/4 30 kW	3327	1470	80400	30	400 <sup>5)</sup>	54,4	290	776	40	417	MSA <sup>6)</sup> 1289	SDD 3 1367	SDZ 7 1929		
<b>40° 2 speed motor, pole-switching (Dahlander winding Y/YY), 400 V / 3 ph./ 50 Hz, protection to IP 55</b> Pole switch surface mounted															
AMD 900/8/4 2,7/12 kW	3328	710/1460	25200/51500	2,7/12	400	6,92/23,4	110	777	40	307	PDA 25 5060	SDD 3 1367	SDZ 6 1927		
AMD 900/8/4 4,0/16 kW	3329	720/1460	29500/60500	4,0/16,0	400	10,6/30,9	190	777	40	332	PDA 63 1283	SDD 3 1367	SDZ 6 1927		
AMD 900/8/4 5,0/19,5 kW	3330	720/1470	33800/68700	5,0/19,5	400	12,7/36,6	230	777	40	347	PDA 63 1283	SDD 3 1367	SDZ 6 1927		
AMD 900/8/4 7,5/29 kW	3331	720/1480	38800/80400	7,5/29,0	400	18,6/54,0	290	777	40	412	PDA 63 1283	SDD 3 1367	SDZ 7 1929		
<b>F300 3 Phase motor, 400 V, 50 Hz, protection to IP 55</b>															
B AMD 900/4 7,5 kW F300	3525	1450	38800	7,5	400 <sup>5)</sup>	8,17	22	498	40 <sup>2)</sup> /300	219	–	SDD 6 1926	SDZ 6 1927		
B AMD 900/4 11 kW F300	3526	1470	49100	11	400 <sup>5)</sup>	21,2	100	498	40 <sup>2)</sup> /300	252	–	SDD 6 1926	SDZ 6 1927		
B AMD 900/4 15 kW F300	3527	1460	55300	15	400 <sup>5)</sup>	28,7	145	498	40 <sup>2)</sup> /300	272	–	SDD 6 1926	SDZ 6 1927		
B AMD 900/4 18,5 kW F300	3528	1460	64000	18,5	400 <sup>5)</sup>	35,1	166	498	40 <sup>2)</sup> /300	311	–	SDD 6 1926	SDZ 6 1927		
B AMD 900/4 22 kW F300	3529	1460	71500	22	400 <sup>5)</sup>	40,5	204	498	40 <sup>2)</sup> /300	333	–	SDD 6 1926	SDZ 6 1927		
B AMD 900/4 30 kW F300	3530	1470	80400	30	400 <sup>5)</sup>	56,2	230	498	40 <sup>2)</sup> /300	369	–	SDD 6 1926	SDZ 6 1927		
<b>F300 2 speed motor, pole-switching (Dahlander winding Y/YY), 400 V / 3 ph./ 50 Hz, protection to IP 55</b> Pole switch surface mounted															
B AMD 900/8/4 3/11 kW F300	3535	720/1450	24500/49100	3,0/11,0	400	7,0/21,0	145	471	40 <sup>2)</sup> /300	266	PDA 25 5060	SDD 6 1926	SDZ 6 1927		
B AMD 900/8/4 4,3/17 kW F300	3536	730/1470	30200/61000	4,3/17,0	400	12,7/33,4	166	471	40 <sup>2)</sup> /300	309	PDA 63 1283	SDD 6 1926	SDZ 6 1927		
B AMD 900/8/4 5/20 kW F300	3537	720/1450	33800/67800	5,0/20,0	400	14,1/38,6	204	471	40 <sup>2)</sup> /300	324	PDA 63 1283	SDD 6 1926	SDZ 6 1927		
B AMD 900/8/4 6,5/28 kW F300	3538	730/1480	38750/79700	6,5/28,0	400	18,0/52,0	230	471	40 <sup>2)</sup> /300	382	PDA 63 1283	SDD 6 1926	SDZ 6 1927		
<b>F400 3 Phase motor, 400 V, 50 Hz, protection to IP 55</b>															
B AMD 900/4 7,5 kW F400	3264	1450	38800	7,5	400 <sup>5)</sup>	8,17	22	498	40 <sup>2)</sup> /400	219	–	SDD 6 1926	SDZ 6 1927		
B AMD 900/4 11 kW F400	3265	1470	49100	11	400 <sup>5)</sup>	21,2	100	498	40 <sup>2)</sup> /400	252	–	SDD 6 1926	SDZ 6 1927		
B AMD 900/4 15 kW F400	3266	1460	55300	15	400 <sup>5)</sup>	28,7	145	498	40 <sup>2)</sup> /400	272	–	SDD 6 1926	SDZ 6 1927		
B AMD 900/4 18,5 kW F400	3267	1460	64000	18,5	400 <sup>5)</sup>	35,1	166	498	40 <sup>2)</sup> /400	311	–	SDD 6 1926	SDZ 6 1927		
B AMD 900/4 22 kW F400	3268	1460	71500	22	400 <sup>5)</sup>	40,5	204	498	40 <sup>2)</sup> /400	333	–	SDD 6 1926	SDZ 6 1927		
<b>F400 2 speed motor, pole-switching (Dahlander winding Y/YY), 400 V / 3 ph./ 50 Hz, protection to IP 55</b> Pole switch surface mounted															
B AMD 900/8/4 3/11 kW F400	3269	720/1450	24500/49100	3,0/11,0	400	7,0/21,0	145	471	40 <sup>2)</sup> /400	266	PDA 25 5060	SDD 6 1926	SDZ 6 1927		
B AMD 900/8/4 4,3/17 kW F400	3270	730/1470	30200/61000	4,3/17,0	400	12,7/33,4	166	471	40 <sup>2)</sup> /400	309	PDA 63 1283	SDD 6 1926	SDZ 6 1927		
B AMD 900/8/4 5/20 kW F400	3271	720/1450	33800/67800	5,0/20,0	400	14,1/38,6	204	471	40 <sup>2)</sup> /400	324	PDA 63 1283	SDD 6 1926	SDZ 6 1927		

Pitch angle is mandatory when ordering. <sup>1)</sup> During ventilation / smoke extraction (nonrecurring 120 minutes). <sup>2)</sup> Higher air flow temperatures during continuous operation (ventilation mode) on request. <sup>3)</sup> Flush mounted version see product page switches. <sup>4)</sup> With Z-/P-design due to higher total weight, type assignment according to tables on page 150. <sup>5)</sup> Y/Δ starting. <sup>6)</sup> Requires fan in special execution with PTC-resistors connected to the terminal box located on the outside of the casing (additional price).



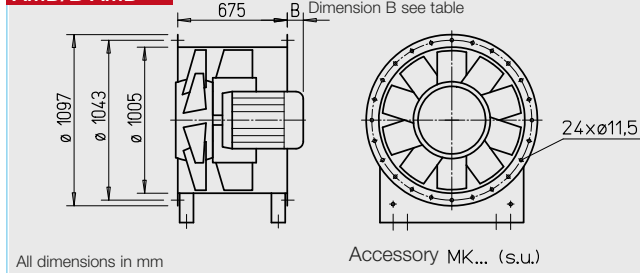


(Fig. incl. mounting feet (MK, accessories))

**■ Certification**

The smoke and heat exhaust fans B AMD were tested to DIN EN 12101-3., the DIBt approvals are applied. CE certificate of conformity 1511 CPD 504 (F300), 1511 CPD 505 (F400).

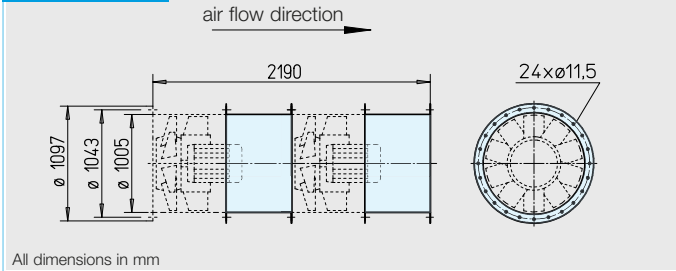
**AMD/B AMD**



All dimensions in mm

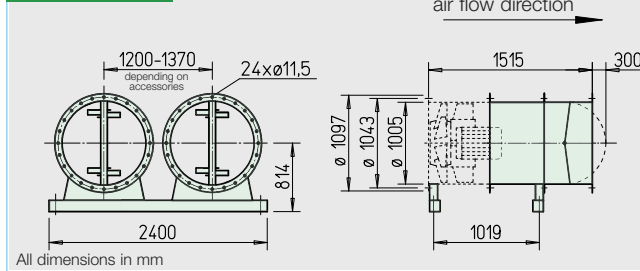
Accessory MK... (s.u.)

**MP-Z 1000**



All dimensions in mm

**MP-P 1000**



All dimensions in mm

**■ Application, casing, air flow direction, etc.**  
see page 46.

**■ Impeller**

- Hub and blades in corrosion-resistant aluminium alloy. Ten aerodynamically profiled blades achieve highest efficiency and pressure rates in cooperation with the guide vane.
- Dynamically balanced to DIN ISO 1940-1, class 6.3 for low-vibration operation.
- The pitch angle of the blades is adjustable at standstill and factory set.

**■ Motor**

- Series AMD: Maintenance-free 3-phase a.c. standard motor, protection to IP 55, insulation class F.
- Series B AMD: Direct by IEC-three phase a.c. motor in temperature-resistant execution. Protection to IP 55. Insulation class H. Fire-resistant external cable with sheathing.

**■ Motor protrusion**

- With some types, the motor casing projects beyond. Protrusion dimension B mm is to be observed according to the type table.

**■ Motor protection**

- The types are to be protected by means of motor protection switch on site. With the B AMD types this is to be bridged in case of smoke extraction.

**■ Electrical connection**

- Series AMD: Standard terminal box (protection to IP 55) from polymer, mounted on the outside of the casing.
- Series B AMD: Standard terminal box (protection to IP 55, from aluminium diecasting), mounted on the outside of the casing.

**■ Air flow temperatures**

- Series AMD: Suitable for ventilation from -20 °C to +40 °C continuous temperature. Higher air flow temperatures for continuous operation on request.
- Series B AMD: Like series AMD, however, in addition for smoke extraction according to the temperature classification to 300 °C/120 minutes or 400 °C/120 minutes.

**■ Mounting package MP-Z for two-stage Z-unit**

To arrange two identical fans in a row, for highest pressure rates.

Scope of delivery: Extension ducts (2 pcs) and assembly kit. Weight: 75 kg

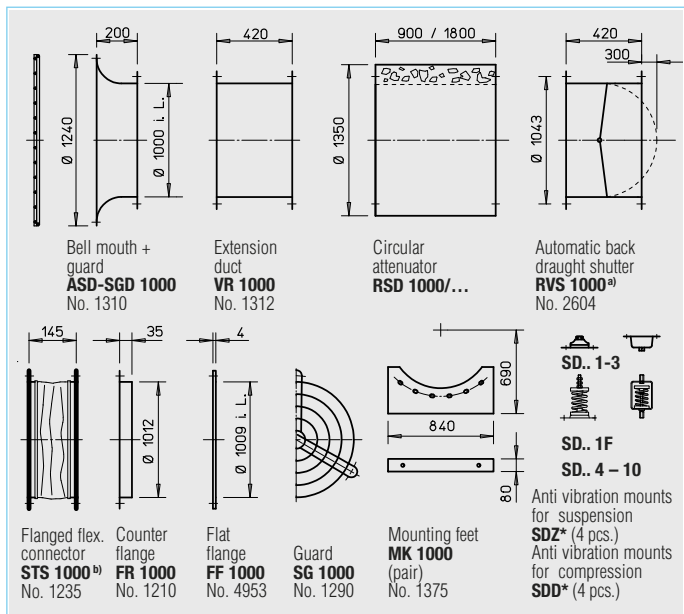
**MP-Z 1000** Ref. No. 4913

**■ Mounting package MP-P for parallel P-unit**

To arrange two identical fans side by side, for highest air flow rates.

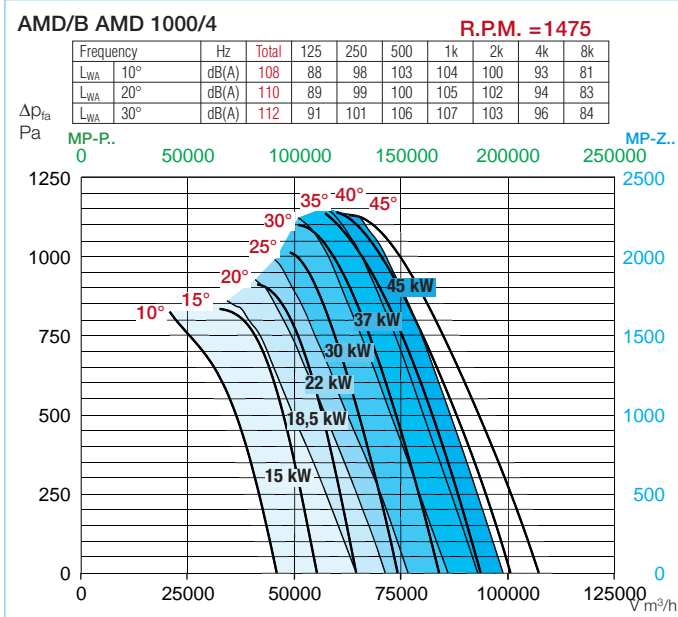
Scope of delivery: Extension ducts, back draught shutters, mounting bars (2 pcs), mounting feet (4 pcs) and assembly kits. Weight: 255 kg

**MP-P 1000** Ref. No. 4897



a) For motorised shutters, for ventilation operation, see accessory pages

b) Type for B AMD: STSB 1000 F400, No. 1921 \* Type assignment see table, last column



Information	Page
Technical description	46
Design of systems	3 on

Special executions	Pages
Special execution with inspection opening (additional price) on request.	
Special execution with PTC-resistors, which are connected to the terminal box located on the outside of the casing (additional price), essential for operation in connection with frequency inverter or full motor protection switch MSA, always specify when ordering.	

Accessory details	Pages
Mounting accessories	146 on
Attenuators	151
Gas warning systems, circuitry and control technology	152 on
Frequency inverter	162 on

Type	Ref. No.	R.P.M.	Air flow volume (FID)	Motor power (nominal)	Voltage	Current at full load	Dim. B Motor protrusion	Wiring diagram	Max. air flow temp. <sup>1)</sup>	Nominal weight (net)	Full motor protection or pole switch		Anti vibration mounts <sup>4)</sup>			
											Type	Ref. No.	Type	Ref. No.		
<b>40°</b> 3 Phase motor, 400 V, 50 Hz, protection to IP 55																
AMD 1000/4 15 kW	3667	1460	64000	15	400 <sup>5)</sup>	28,1	160	498	40	330	MSA <sup>6)</sup>	1289	SDD 6	1926	SDZ 6	1927
AMD 1000/4 18,5 kW	3668	1460	71000	18,5	400 <sup>5)</sup>	34,0	195	498	40	370	MSA <sup>6)</sup>	1289	SDD 6	1926	SDZ 6	1927
AMD 1000/4 22 kW	3669	1470	77000	22	400 <sup>5)</sup>	40,2	235	498	40	383	MSA <sup>6)</sup>	1289	SDD 6	1926	SDZ 6	1927
AMD 1000/4 30 kW	3670	1470	86000	30	400 <sup>5)</sup>	54,4	290	498	40	453	MSA <sup>6)</sup>	1289	SDD 7	1928	SDZ 7	1929
AMD 1000/4 37 kW	3671	1480	93000	37	400 <sup>5)</sup>	66,2	300	498	40	493	MSA <sup>6)</sup>	1289	SDD 7	1928	SDZ 7	1929
AMD 1000/4 45 kW	3672	1480	99000	45	400 <sup>5)</sup>	80,1	325	498	40	523	MSA <sup>6)</sup>	1289	SDD 7	1928	SDZ 7	1929
<b>40°</b> 2 speed motor, pole-switching (Dahlander winding Y/YY), 400 V / 3 ph./ 50 Hz, protection to IP 55																
												Pole switch surface mounted				
AMD 1000/8/4 4,0/16 kW	3674	720/1460	25200/51500	4,0/16,0	400	10,6/30,9	195	471	40	368	PDA 63	1283	SDD 6	1926	SDZ 6	1927
AMD 1000/8/4 5,0/19,5 kW	3675	720/1470	29500/60500	5,0/19,5	400	12,7/36,6	235	471	40	383	PDA 63	1283	SDD 6	1926	SDZ 6	1927
AMD 1000/8/4 7,5/29,5 kW	3676	720/1480	33800/68700	7,5/29,0	400	18,6/54,0	325	471	40	448	PDA 63	1283	SDD 7	1928	SDZ 7	1929
AMD 1000/8/4 9,5/40,0 kW	3677	720/1480	38800/80400	9,5/40,0	400	25,4/74,6	300	471	40	503	PDA 115	1352	SDD 7	1928	SDZ 7	1929
<b>F300</b> 3 Phase motor, 400 V, 50 Hz, protection to IP 55																
B AMD 1000/4 15 kW F300	3630	1460	64000	15	400 <sup>5)</sup>	28,7	150	498	40 <sup>2)</sup> /300	308	–	–	SDD 6	1926	SDZ 6	1927
B AMD 1000/4 18,5 kW F300	3631	1460	71000	18,5	400 <sup>5)</sup>	35,1	210	498	40 <sup>2)</sup> /300	347	–	–	SDD 6	1926	SDZ 6	1927
B AMD 1000/4 22 kW F300	3632	1470	77000	22	400 <sup>5)</sup>	40,5	210	498	40 <sup>2)</sup> /300	369	–	–	SDD 6	1926	SDZ 6	1927
B AMD 1000/4 30 kW F300	3633	1470	86000	30	400 <sup>5)</sup>	56,2	275	498	40 <sup>2)</sup> /300	405	–	–	SDD 7	1928	SDZ 7	1929
B AMD 1000/4 37 kW F300	3634	1480	93000	37	400 <sup>5)</sup>	66,6	325	498	40 <sup>2)</sup> /300	525	–	–	SDD 7	1928	SDZ 7	1929
B AMD 1000/4 45 kW F300	3635	1480	99000	45	400 <sup>5)</sup>	80,7	325	498	40 <sup>2)</sup> /300	546	–	–	SDD 7	1928	SDZ 7	1929
<b>F300</b> 2 speed motor, pole-switching (Dahlander winding Y/YY), 400 V / 3 ph./ 50 Hz, protection to IP 55																
												Pole switch surface mounted				
B AMD 1000/8/4 4,3/17 kW F300	3636	730/1470	24500/49100	4,3/17,0	400	12,7/33,4	170	471	40 <sup>2)</sup> /300	345	PDA 63	1283	SDD 6	1926	SDZ 6	1927
B AMD 1000/8/4 5,0/20 kW F300	3637	720/1450	30200/61000	5,0/20,0	400	14,1/38,6	210	471	40 <sup>2)</sup> /300	360	PDA 63	1283	SDD 6	1926	SDZ 6	1927
B AMD 1000/8/4 6,5/28 kW F300	3638	730/1480	33800/67800	6,5/28,0	400	18,0/52,0	275	471	40 <sup>2)</sup> /300	418	PDA 63	1283	SDD 7	1928	SDZ 7	1929
B AMD 1000/8/4 9,2/37 kW F300	3639	740/1485	38750/79700	9,2/37,0	400	25,4/74,2	325	471	40 <sup>2)</sup> /300	543	PDA 115	1352	SDD 7	1928	SDZ 7	1929
B AMD 1000/8/4 11/44 kW F300	3640	740/1480	33800/67800	11,0/44,0	400	27,2/80,2	325	471	40 <sup>2)</sup> /300	608	PDA 115	1352	SDD 3	1367	SDZ 8	1931
<b>F400</b> 3 Phase motor, 400 V, 50 Hz, protection to IP 55																
B AMD 1000/4 15 kW F400	3580	1460	64000	15	400 <sup>5)</sup>	28,7	150	498	40 <sup>2)</sup> /400	308	–	–	SDD 6	1926	SDZ 6	1927
B AMD 1000/4 18,5 kW F400	3581	1460	71000	18,5	400 <sup>5)</sup>	35,1	210	498	40 <sup>2)</sup> /400	347	–	–	SDD 6	1926	SDZ 6	1927
B AMD 1000/4 22 kW F400	3582	1470	77000	22	400 <sup>5)</sup>	40,5	210	498	40 <sup>2)</sup> /400	369	–	–	SDD 6	1926	SDZ 6	1927
B AMD 1000/4 30 kW F400	3583	1470	86000	30	400 <sup>5)</sup>	56,2	275	498	40 <sup>2)</sup> /400	405	–	–	SDD 7	1928	SDZ 7	1929
B AMD 1000/4 37 kW F400	3584	1480	93000	37	400 <sup>5)</sup>	66,6	325	498	40 <sup>2)</sup> /400	529	–	–	SDD 7	1928	SDZ 7	1929
B AMD 1000/4 45 kW F400	3585	1480	99000	45	400 <sup>5)</sup>	80,7	325	498	40 <sup>2)</sup> /400	546	–	–	SDD 7	1928	SDZ 7	1929
<b>F400</b> 2 speed motor, pole-switching (Dahlander winding Y/YY), 400 V / 3 ph./ 50 Hz, protection to IP 55																
												Pole switch surface mounted				
B AMD 1000/8/4 4,3/17 kW F400	3597	730/1470	24500/49100	4,3/17,0	400	12,7/33,4	170	471	40 <sup>2)</sup> /400	345	PDA 63	1283	SDD 6	1926	SDZ 6	1927
B AMD 1000/8/4 5,0/20 kW F400	3598	720/1450	30200/61000	5,0/20,0	400	14,1/38,6	210	471	40 <sup>2)</sup> /400	360	PDA 63	1283	SDD 6	1926	SDZ 6	1927
B AMD 1000/8/4 6,5/28 kW F400	3599	730/1480	24500/49100	6,5/28,0	400	18,0/52,0	275	471	40 <sup>2)</sup> /400	418	PDA 63	1283	SDD 7	1928	SDZ 7	1929
B AMD 1000/8/4 9,2/37 kW F400	3600	740/1485	30200/61000	9,2/37,0	400	25,4/74,2	325	471	40 <sup>2)</sup> /400	543	PDA 115	1352	SDD 7	1928	SDZ 7	1929
B AMD 1000/8/4 11/44 kW F400	3601	740/1480	33800/67800	11,0/44,0	400	27,2/80,2	325	471	40 <sup>2)</sup> /400	608	PDA 115	1352	SDD 3	1367	SDZ 8	1931

Pitch angle is mandatory when ordering. <sup>1)</sup> During ventilation / smoke extraction (nonrecurring 120 minutes). <sup>2)</sup> Higher air flow temperatures during continuous operation (ventilation mode) on request. <sup>3)</sup> Flush mounted version see product page switches. <sup>4)</sup> With Z-/P-design due to higher total weight, type assignment according to tables on page 150. <sup>5)</sup> Y/Δ starting. <sup>6)</sup> Requires fan in special execution with PTC-resistors connected to the terminal box located on the outside of the casing (additional price).

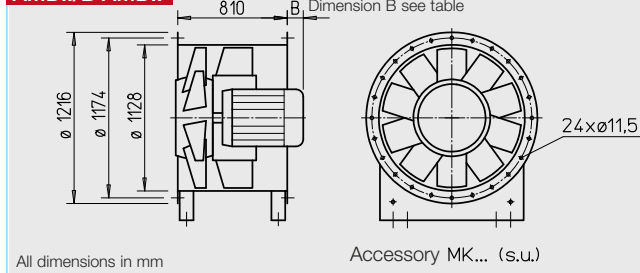


((Fig. incl. mounting feet (MK, accessories)

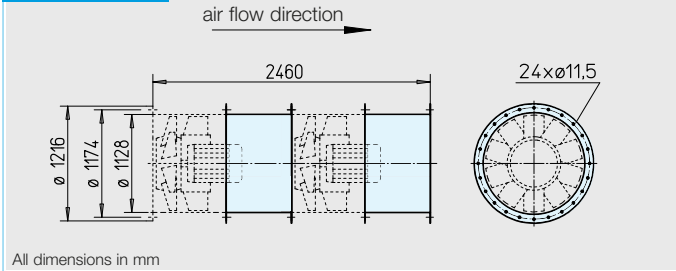
**■ Certification**

The smoke and heat exhaust fans B AMD were tested to DIN EN 12101-3., the DIBt approvals are applied. CE certificate of conformity 1511 CPD 504 (F300), 1511 CPD 505 (F400).

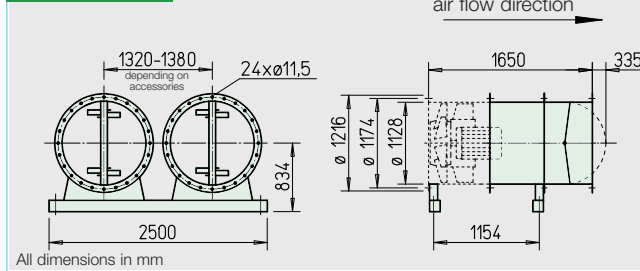
**AMD../B AMD..**



**MP-Z 1120**



**MP-P 1120**



**■ Application, casing, air flow direction, etc.**  
see page 46.

**■ Impeller**

- Hub and blades in corrosion-resistant aluminium alloy. Ten aerodynamically profiled blades achieve highest efficiency and pressure rates in cooperation with the guide vane.
- Dynamically balanced to DIN ISO 1940-1, class 6.3 for low-vibration operation.
- The pitch angle of the blades is adjustable at standstill and factory set.

**■ Motor**

- Series AMD: Maintenance-free 3-phase a.c. standard motor, protection to IP 55, insulation class F.
- Series B AMD: Direct by IEC-three phase a.c. motor in temperature-resistant execution. Protection to IP 55. Insulation class H. Fire-resistant external cable with sheathing..

**■ Motor protrusion**

- With some types, the motor casing projects beyond. Protrusion dimension B mm is to be observed according to the type table.

**■ Motor protection**

- The types are to be protected by means of motor protection switch on site. With the B AMD types this is to be bridged in case of smoke extraction.

**■ Electrical connection**

- Series AMD: Standard terminal box (protection to IP 55) from polymer, mounted on the outside of the casing.
- Series B AMD: Standard terminal box (protection to IP 55, from aluminium diecasting), mounted on the outside of the casing.

**■ Air flow temperatures**

- Series AMD: Suitable for ventilation from -20 °C to +40 °C continuous temperature. Higher air flow temperatures for continuous operation on request.
- Series B AMD: Like series AMD, however, in addition for smoke extraction according to the temperature classification to 300 °C/120 minutes or 400 °C/120 minutes.

**■ Mounting package MP-Z for two-stage Z-unit**

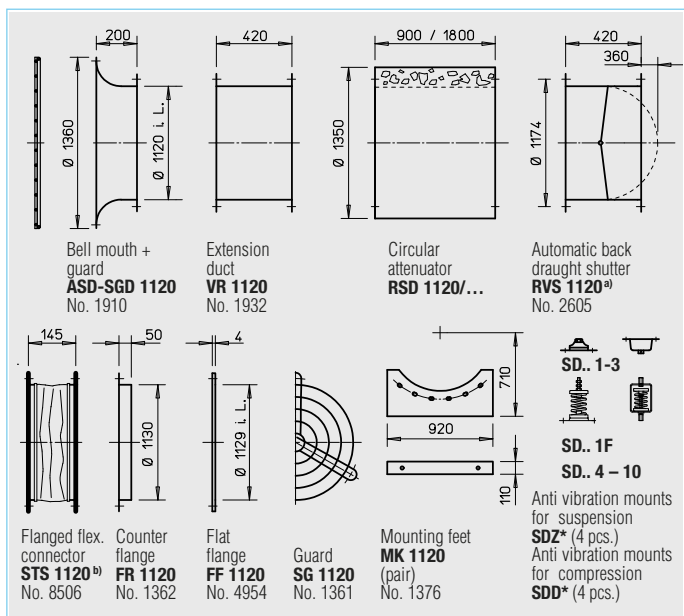
To arrange two identical fans in a row, for highest pressure rates. Scope of delivery: Extension ducts (2 pcs) and assembly kit. Weight: 85 kg

**MP-Z 1120** Ref. No. 4914

**■ Mounting package MP-P for parallel P-unit**

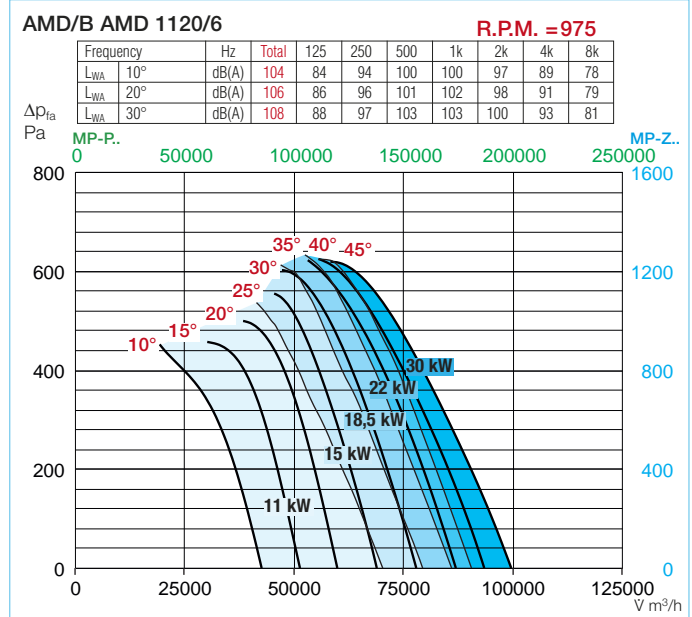
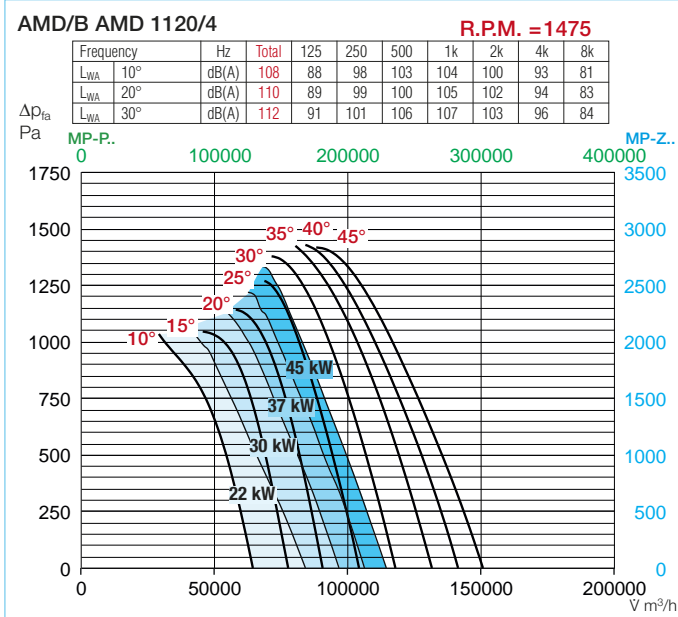
To arrange two identical fans side by side, for highest air flow rates. Scope of delivery: Extension ducts, back draught shutters, mounting bars (2 pcs), mounting feet (4 pcs) and assembly kits. Weight: 290 kg

**MP-P 1120** Ref. No. 4898



a) For motorised shutters, for ventilation operation, see accessory pages

b) Type for B AMD: STSB 1120 F400, No. 1922 \* Type assignment see table, last column



Information	Page
Technical description	46
Design of systems	3 on

Special executions	Pages
Special execution with PTC-resistors, which are connected to the terminal box located on the outside of the casing (additional price), essential for operation in connection with frequency inverter or full motor protection switch MSA.	

Accessory details	Pages
Mounting accessories	146 on
Attenuators	151
Gas warning systems, circuitry and control technology	152 on
Frequency inverter	162 on

Type	Ref. No.	R.P.M.	Air flow volume (FID)	Motor power (nominal)	Voltage	Current at full load	Dim. B Motor protrusion	Wiring diagram	Max. air flow temp. <sup>1)</sup>	Nominal weight (net)	Full motor protection or pole switch	Anti vibration mounts <sup>4)</sup>			
												Compression	Suspension		
												Type	Ref. No.	Type	Ref. No.
<b>40° 3 Phase motor, 400 V, 50 Hz, protection to IP 55</b>															
AMD 1120/6 11 kW	3899	970	70000	11	400 <sup>5)</sup>	22,9	25	498	40	402	MSA <sup>6)</sup> 1289	SDD 7	1928	SDZ 7	1929
AMD 1120/6 15 kW	3900	975	79000	15	400 <sup>5)</sup>	29,8	100	498	40	433	MSA <sup>6)</sup> 1289	SDD 7	1928	SDZ 7	1929
AMD 1120/6 18,5 kW	3901	980	86000	18,5	400 <sup>5)</sup>	36,4	150	498	40	471	MSA <sup>6)</sup> 1289	SDD 7	1928	SDZ 7	1929
AMD 1120/6 22 kW	3902	980	91000	22	400 <sup>5)</sup>	42,0	150	498	40	486	MSA <sup>6)</sup> 1289	SDD 7	1928	SDZ 7	1929
AMD 1120/6 30 kW	3903	980	100000	30	400 <sup>5)</sup>	56,2	190	498	40	552	MSA <sup>6)</sup> 1289	SDD 7	1928	SDZ 7	1929
AMD 1120/4 22 kW	3953	1470	84000	22	400 <sup>5)</sup>	40,2	100	498	40	435	MSA <sup>6)</sup> 1289	SDD 7	1928	SDZ 7	1929
AMD 1120/4 30 kW	3954	1470	97000	30	400 <sup>5)</sup>	54,4	150	498	40	505	MSA <sup>6)</sup> 1289	SDD 7	1928	SDZ 7	1929
AMD 1120/4 37 kW	3955	1480	106000	37	400 <sup>5)</sup>	66,2	165	498	40	545	MSA <sup>6)</sup> 1289	SDD 7	1928	SDZ 7	1929
AMD 1120/4 45 kW	3956	1480	114000	45	400 <sup>5)</sup>	80,1	190	498	40	575	MSA <sup>6)</sup> 1289	SDD 7	1928	SDZ 7	1929
<b>40° 2 speed motor, pole-switching (Dahlander winding Y/YY), 400 V / 3 ph./ 50 Hz, protection to IP 55</b>												Pole switch surface mounted			
AMD 1120/8/4 4,0/16,0 kW	3924	700/1440	25200/51500	4,0/16,0	400	10,6/30,9	60	471	40	420	PDA 63 1283	SDD 7	1928	SDZ 7	1929
AMD 1120/8/4 5,0/19,5 kW	3925	700/1440	29500/60500	5,0/19,5	400	12,7/36,6	100	471	40	435	PDA 63 1283	SDD 7	1928	SDZ 7	1929
AMD 1120/8/4 7,5/29,5 kW	3926	720/1470	33800/68700	7,5/29,5	400	18,6/54,0	150	471	40	500	PDA 63 1283	SDD 7	1928	SDZ 7	1929
AMD 1120/8/4 9,5/40,0 kW	3927	720/1480	38800/80400	9,5/40,0	400	25,4/74,6	190	471	40	555	PDA 115 1352	SDD 7	1928	SDZ 7	1929
<b>F400 3 Phase motor, 400 V, 50 Hz, protection to IP 55</b>															
B AMD 1120/6 11 kW F400	3818	970	70000	11	400 <sup>5)</sup>	22,0	15	498	40 <sup>2)</sup> /300	371	–	SDD 7	1928	SDZ 6	1927
B AMD 1120/6 15 kW F400	3819	975	79000	15	400 <sup>5)</sup>	27,9	75	498	40 <sup>2)</sup> /300	409	–	SDD 7	1928	SDZ 6	1927
B AMD 1120/6 18,5 kW F400	3820	980	86000	18,5	400 <sup>5)</sup>	35,7	140	498	40 <sup>2)</sup> /300	449	–	SDD 7	1928	SDZ 6	1927
B AMD 1120/6 22 kW F400	3821	980	91000	22	400 <sup>5)</sup>	42,3	140	498	40 <sup>2)</sup> /300	467	–	SDD 7	1928	SDZ 6	1927
B AMD 1120/6 30 kW F400	3822	980	100000	30	400 <sup>5)</sup>	54,2	230	498	40 <sup>2)</sup> /300	594	–	SDD 7	1928	SDZ 6	1927
B AMD 1120/4 22 kW F400	3619	1470	84000	22	400 <sup>5)</sup>	40,5	75	498	40 <sup>2)</sup> /300	421	–	SDD 7	1928	SDZ 6	1927
B AMD 1120/4 30 kW F400	3620	1470	97000	30	400 <sup>5)</sup>	56,2	140	498	40 <sup>2)</sup> /300	457	–	SDD 7	1928	SDZ 6	1927
B AMD 1120/4 37 kW F400	3621	1480	106000	37	400 <sup>5)</sup>	66,6	190	498	40 <sup>2)</sup> /300	577	–	SDD 7	1928	SDZ 6	1927
B AMD 1120/4 45 kW F400	3622	1480	114000	45	400 <sup>5)</sup>	80,7	190	498	40 <sup>2)</sup> /300	598	–	SDD 3	1367	SDZ 8	1931
<b>F400 2 speed motor, pole-switching (Dahlander winding Y/YY), 400 V / 3 ph./ 50 Hz, protection to IP 55</b>												Pole switch surface mounted			
B AMD 1120/8/4 4,3/17 kW F400	3962	730/1470	24500/49100	4,3/17,0	400	12,7/33,4	35	471	40 <sup>2)</sup> /400	397	PDA 63 1283	SDD 6	1926	SDZ 6	1927
B AMD 1120/8/4 5,0/20 kW F400	3963	720/1450	30200/61000	5,0/20,0	400	14,1/38,6	75	471	40 <sup>2)</sup> /400	412	PDA 63 1283	SDD 7	1928	SDZ 7	1929
B AMD 1120/8/4 6,5/28 kW F400	3964	730/1480	24500/49100	6,5/28,0	400	18,0/52,0	140	471	40 <sup>2)</sup> /400	470	PDA 63 1283	SDD 7	1928	SDZ 7	1929
B AMD 1120/8/4 9,2/37 kW F400	3965	740/1485	30200/61000	9,2/37,0	400	25,4/74,2	190	471	40 <sup>2)</sup> /400	595	PDA 115 1352	SDD 3	1367	SDZ 8	1931
B AMD 1120/8/4 11/44 kW F400	3966	720/1450	33800/67800	11,0/44,0	400	27,2/80,2	190	471	40 <sup>2)</sup> /400	660	PDA 115 1352	SDD 3	1367	SDZ 8	1931

Pitch angle is mandatory when ordering. <sup>1)</sup> During ventilation / smoke extraction (nonrecurring 120 minutes). <sup>2)</sup> Higher air flow temperatures during continuous operation (ventilation mode) on request. <sup>3)</sup> Flush mounted version see product page switches. <sup>4)</sup> With Z-/P-design due to higher total weight, type assignment according to tables on page 150. <sup>5)</sup> Y/Δ starting. <sup>6)</sup> Requires fan in special execution with PTC-resistors connected to the terminal box located on the outside of the casing (additional price).